



6 Toy Court, WODONGA, VIC 3690

A Hidden Gem with Views, Versatility & A Luxe Poolside Lifestyle"

Set in a tightly held and highly coveted estate, this beautifully positioned residence delivers space, privacy and sweeping views on a generous 904m² allotment.

Thoughtfully designed for growing families and effortless entertaining, the home is equipped with ducted gas heating and ducted evaporative cooling, while offering three expansive living zones. A versatile rumpus room provides flexibility and can easily convert into a fourth bedroom if desired.

The king-sized master suite is a true retreat, complete with a walk-in robe and a well-appointed ensuite featuring a double basin vanity and separate toilet. The remaining bedrooms are fitted with built-in robes and are serviced by a full family bathroom, separate toilet and additional powder room for added convenience.

At the heart of the home, the open plan kitchen, meals and living area creates a seamless space for everyday living. The kitchen is well-equipped with a gas cooktop, freestanding oven and dishwasher, all perfectly positioned to overlook the indoor and outdoor entertaining zones.

TYPE: For Sale

INTERNET ID: 21P10359

SALE DETAILS

\$919,000

CONTACT DETAILS

Albury

140 High Street
WODONGA, VIC
02 6021 2199

Jamie Maynard
0413 743 361

Step outside to a large undercover alfresco area, complete with ceiling fans, ideal for year-round entertaining. Beyond, a private backyard oasis awaits, showcasing a heated, salt-chlorinated pool with spa-perfect for relaxing or hosting family and friends in complete privacy. Adding to the appeal, a dedicated kids' basketball court provides endless outdoor fun for the whole family.

Practicality meets lifestyle with expansive off-street parking, offering ample space for a caravan, boat and trailer, while a 6.6kW solar system helps keep energy costs down.

Additional features include new blinds and carpet throughout, multiple living options, and a peaceful setting that captures elevated views while maintaining a sense of seclusion.

A rare opportunity to secure a spacious, feature-packed family home in a premium location-this is lifestyle living at its finest.

Council Rates \$779.20 Per quarter

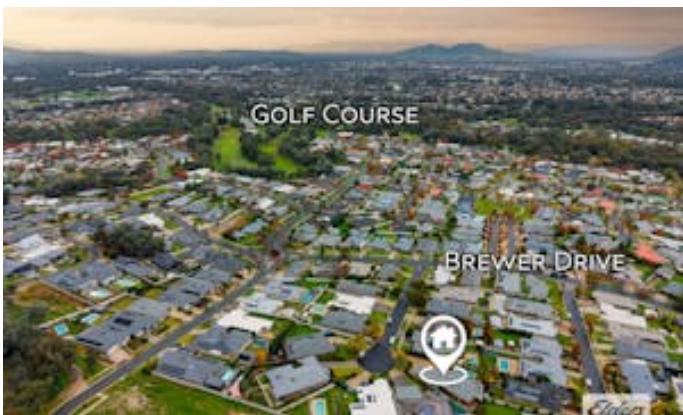
Water Rates \$132.80 + Usage Per quarter

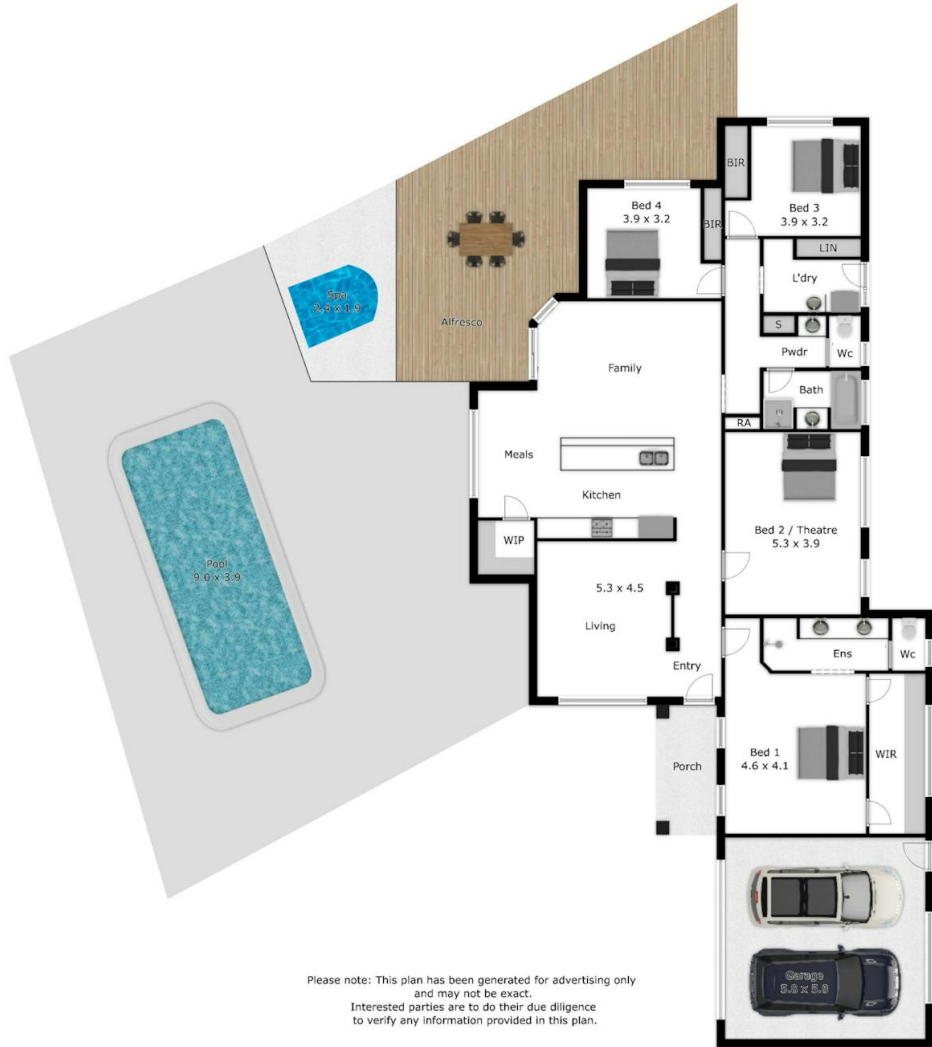
- Land Area 904.00 square metres
- Bedrooms: 4
- Bathrooms: 2
- Double garage











Please note: This plan has been generated for advertising only and may not be exact. Interested parties are to do their due diligence to verify any information provided in this plan.