

81 Bremer Avenue, LENEVA, VIC 3691

Modern Family Living Opposite Parkland in Kinchington Estate

Positioned in the ever popular Kinchington Estate and directly opposite a children's park, this well appointed family home delivers modern comfort, practical design and easy living in a location families will love.

Built by Afonso Building Solutions and set on a 603m² allotment, the home has been thoughtfully designed with space and flexibility in mind. Offering four bedrooms and multiple living zones, it provides room for growing families to spread out while still feeling connected.

The main bedroom is privately positioned and features a walk-in robe along with a stylish ensuite complete with a large shower, vanity and toilet. The remaining bedrooms are all serviced by a centrally located family bathroom offering a bath, shower and vanity, with a separate toilet located alongside for everyday convenience while a powder room to the front of the home offers further convenience.

At the centre of the home, open-plan living brings everyone together with a generous family area, meals space and well-equipped kitchen forming the hub of the home. Designed for both functionality and entertaining, the kitchen includes a walk-in pantry, island bench with dishwasher, excellent storage and a freestanding cooker with gas

TYPE: For Sale

INTERNET ID: 21P10442

SALE DETAILS

\$799,000

CONTACT DETAILS

Albury

140 High Street
WODONGA, VIC
02 6021 2199

Dean Star

0407 685 580

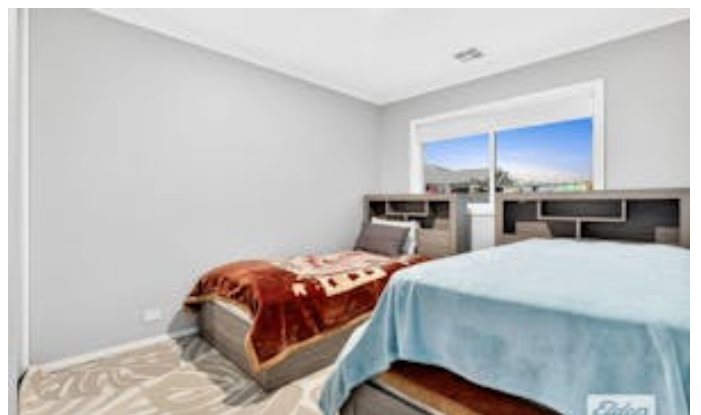
cooktop and electric oven. To the rear, a second living area provides excellent flexibility and can be closed off, making it ideal as a lounge, media room, kids' retreat or quiet space to unwind.

Sliding doors extend outdoors to a covered alfresco area overlooking the low-maintenance rear yard-perfect for weekend barbecues, entertaining friends or simply enjoying a relaxed afternoon at home. A storage shed adds practicality, while solar panels to the roof offer added efficiency.

Year-round comfort is assured with ducted refrigerated cooling and ducted gas heating throughout.

Located in a family friendly pocket of Leneva with parkland just across the road, walking tracks nearby and easy access to schools, shopping and Wodonga amenities, this is a quality home offering space, comfort and lifestyle in equal measure.

- Land Area 603.00 square metres
- Bedrooms: 4
- Bathrooms: 2
- Double garage







Whilst bwrn.com.au has made every attempt to ensure the accuracy of the floor plan contained here, measurements are approximate and no responsibility is taken for any error, omission, or mis-statement. This plan is for illustrative purposes only.



81 Bremer Avenue, Leneva

Elders Real Estate