



42 Ruthven Circuit, WODONGA, VIC 3690

Spacious Modern Family Living with Style & Convenience

Designed with comfort and functionality in mind, this beautifully presented four-bedroom residence delivers the perfect balance of modern style and everyday practicality. Offering generous proportions, quality finishes, and multiple living zones, this home is ideal for growing families or those who love to entertain.

The master suite is privately positioned and features a walk-in robe and well-appointed ensuite, while the remaining three bedrooms are all generously sized and include built-in robes. A separate lounge provides a quiet retreat, complemented by a spacious open plan living and meals area that forms the heart of the home.

The contemporary kitchen is sure to impress, complete with stone benchtops, an extra-large gas cooktop and oven, and the added luxury of a fully equipped butler's pantry with its own cooktop and sink — perfect for seamless entertaining and additional preparation space.

Comfort is assured year-round with ducted heating and cooling throughout, while a thoughtful floorplan includes a spacious entry, ample storage, and a well-equipped laundry with walk-in linen.

TYPE: For Sale

INTERNET ID: 21P10539

SALE DETAILS

\$849,000

CONTACT DETAILS

Albury

140 High Street
WODONGA, VIC
02 6021 2199

Jamie Maynard

0413 743 361

Step outside to a covered alfresco area featuring a ceiling fan, creating the ideal setting for entertaining in any season. Additional highlights include a double lock-up garage with internal access, 6.6kw solar power for energy efficiency, and NBN connectivity.

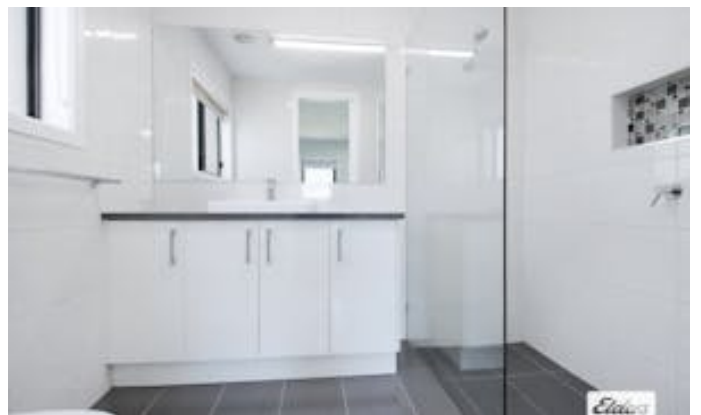
Conveniently located close to schools, shops, and local amenities, this home offers a lifestyle of ease and modern comfort in a highly sought-after setting.

An exceptional opportunity to secure a quality home that ticks all the boxes.

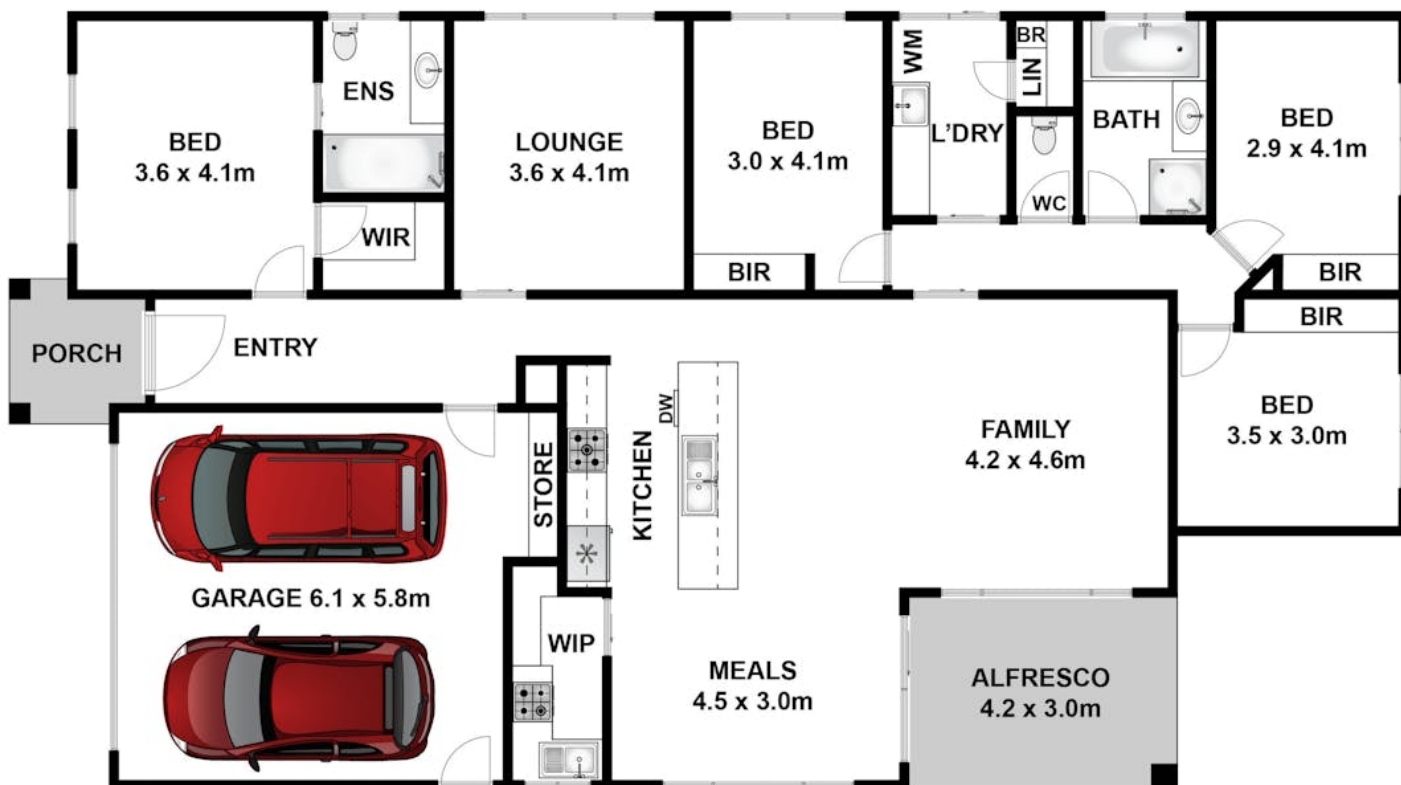
Currently tenanted \$650 per week - fixed term until 19 January 2027

Council rates | \$642.15 approx per quarter

- Land Area 512.00 square metres
- Bedrooms: 4
- Bathrooms: 2
- Double garage







Whilst bwrn.com.au has made every attempt to ensure the accuracy of the floor plan contained here, measurements are approximate and no responsibility is taken for any error, omission, or mis-statement. This plan is for illustrative purposes only.



42 Ruthven Circuit, Wodonga

Elders Real Estate