



15 Keighran Avenue, WODONGA, VIC 3690

Family Haven In Whitebox Rise Estate

Welcome to your new sanctuary in the heart of Whitebox Rise Estate, a thriving community perfect for families. This generous four bedroom home is thoughtfully designed for modern family living, offering everything you need and more!

As you step inside, you'll be greeted by the sunlit galley style kitchen, the centerpiece of the home, featuring butler's pantry, island bench with a stunning stone waterfall benchtop, standalone cooker with a dishwasher. It's a chef's delight and the perfect space to gather and entertain.

The master suite is a private retreat, complete with a walk-in robe and a luxurious ensuite boasting a double vanity, shower, and a private toilet. The remaining three bedrooms, all with built-in robes, ensure ample space for the whole family and are serviced by the family bathroom complete with a bath, shower and vanity designed with both style and functionality in mind.

Adding an extra layer of convenience the home also offers a third shower and toilet to the garage, a terrific feature for the home handy person or tradie who likes to clean up before entering the home.

TYPE: Sold

INTERNET ID: 21P2067

SALE DETAILS

\$729,000

CONTACT DETAILS

Albury

140 High Street
WODONGA, VIC
02 6021 2199

Dean Star

0407 685 580

Living zones have been well thought out with a front living room providing a separate, quiet space for relaxation with an open plan living and meals area adjoining the kitchen and a study nook also included ideal for the kids' homework or your home office needs.

For the car enthusiast or anyone needing extra storage, the four car garage with remote access is a fantastic feature. Plus, the rear roller door offers easy access to the backyard, perfect for outdoor entertaining.

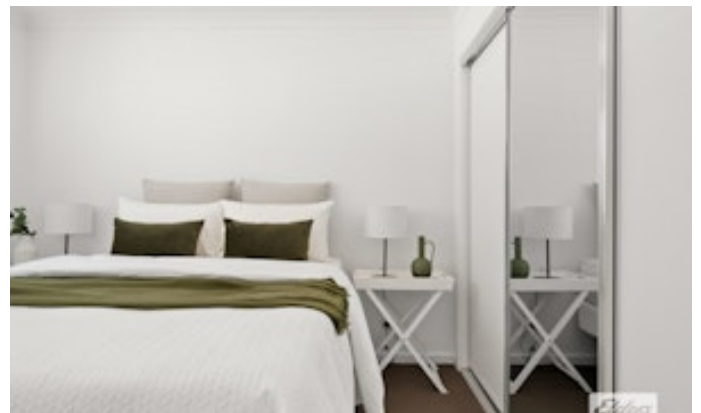
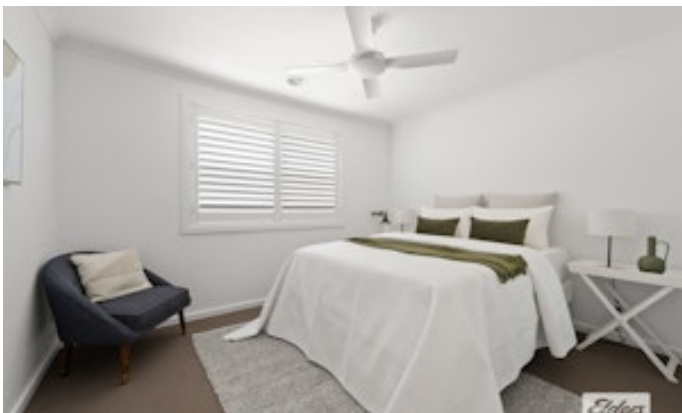
Comfort is guaranteed year-round with ducted evaporative cooling and ducted gas heating, ensuring your family stays cozy in every season with solar panels to roof to assist with power bills.

Nestled close to a local school, childcare, shopping center, Waves Aquatic Centre, parks, and walking tracks, and just a short drive to Wodonga's CBD, this home offers the perfect blend of convenience and tranquility.

Make this dream home yours and enjoy all the wonderful amenities and lifestyle that Whitebox Rise Estate has to offer. Come and see for yourself â## it's everything you've been searching for and more.

<https://www.consumer.vic.gov.au/duediligencechecklist>

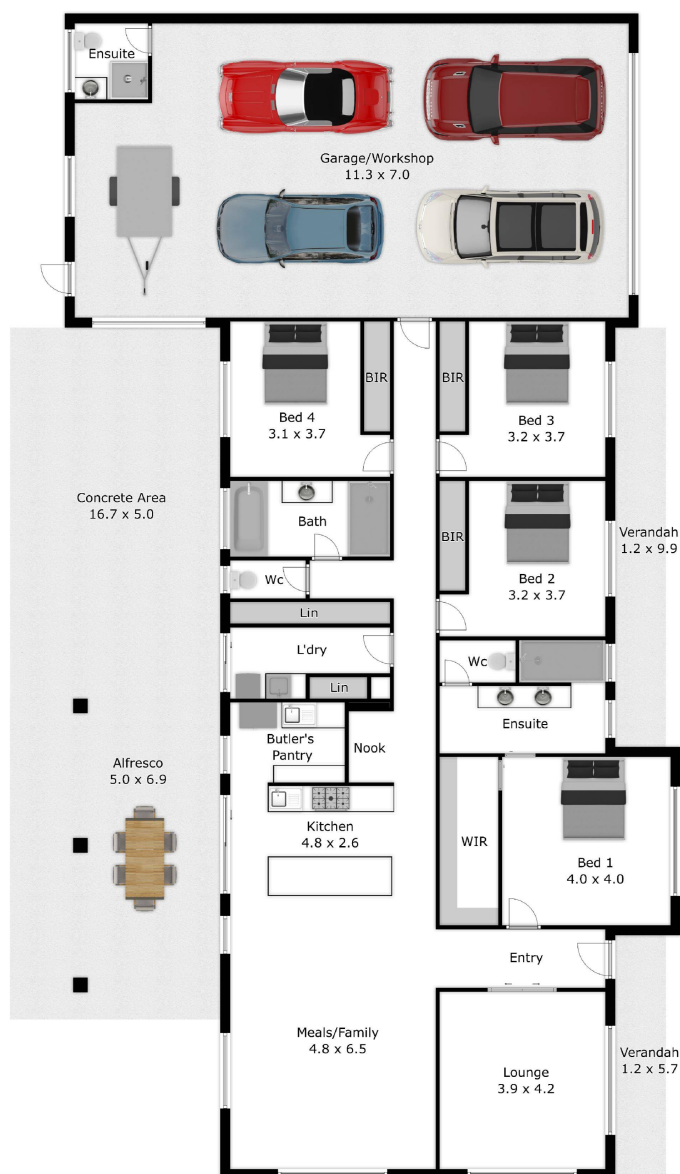
- Land Area 636.00 square metres
- Bedrooms: 4
- Bathrooms: 3
- 4 car garage











APPROX. INTERIOR LIVING AREA
299.3 sq. m

Please note: This plan has been generated for advertising only
and may not be exact.
Interested parties are to do their due diligence
to verify any information provided in this plan.