



6 Oatlands Fairway, WODONGA, VIC 3690

Large Family Home Overlooking Golfcourse

A terrific sized family home offering exclusive living with views over the Wodonga Golf Course and offering comfortable family living.

Set on a massive 880m2 allotment this home is a magnificent property with quality finishes throughout and is brilliantly zoned with an enormous front carpeted lounge room and separate tiled family/meals area overlooked by a well appointed kitchen offering ample bench space, breakfast bar, oversized fridge cavity and gas cooking.

The home provides comfortable living internally with ducted evaporative cooling, ducted gas heating further enhanced with the outdoor entertaining area, double lock-up garage, rear garden shed 3.8 x 4.4m in size, side access to rear yard plus access through the garage.

Family friendly in sought after Country Club Estate, a lovely spot with Wodonga Golfcourse & The Clubhouse Bar and Grill nearby.

- Master bedroom offers walk-in robe and ensuite
- Full family bathroom and adjoining powder room
- Low maintenance rear yard with secure fencing

TYPE: Sold

INTERNET ID: 21P6299

SALE DETAILS

\$610,000-\$650,000

CONTACT DETAILS

Albury

532 David Street
ALBURY, NSW
02 6021 2199

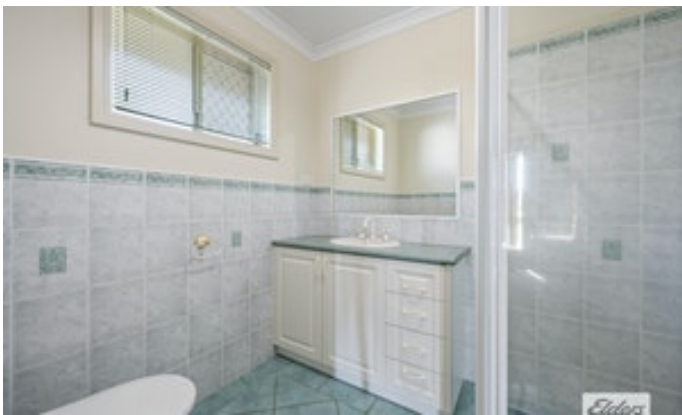
Dean Star

0407 685 580

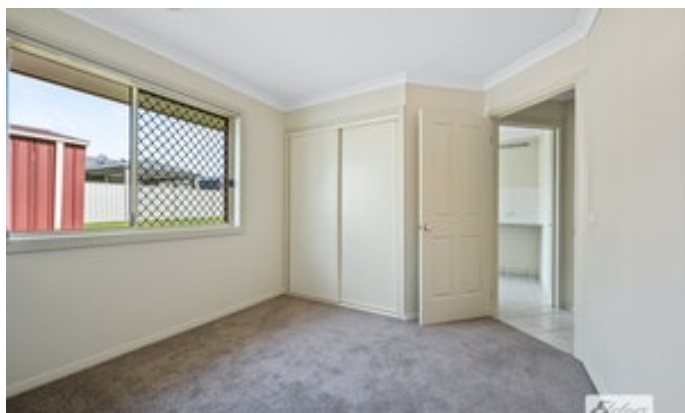
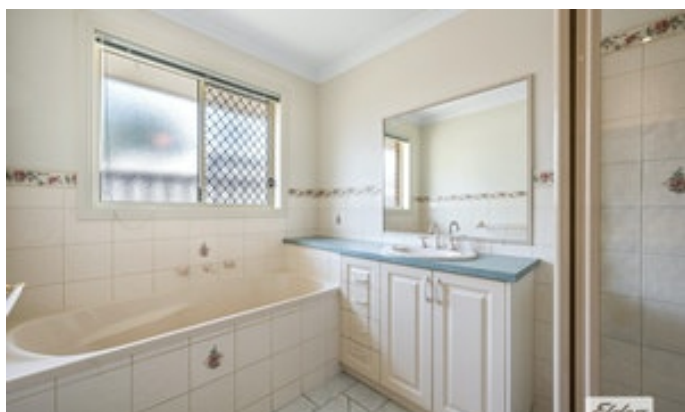
- Potential rental return of \$540-\$555 per week

<https://www.consumer.vic.gov.au/duediligencechecklist>

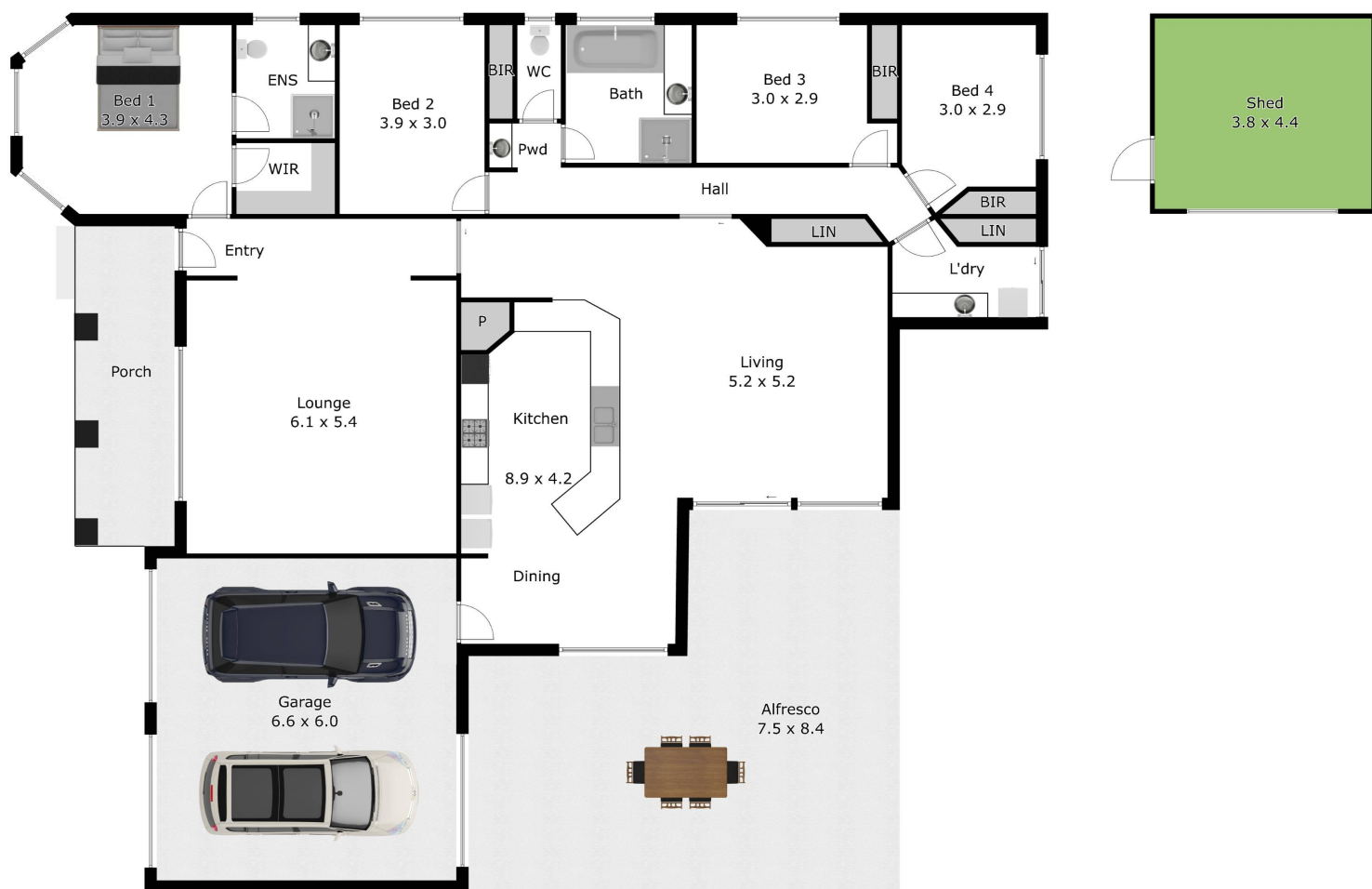
- Land Area 880.00 square metres
- Bedrooms: 4
- Bathrooms: 2
- Double garage











APPROX. INTERIOR LIVING
201.7 sq. m
Measurements are an approximate guide only.
Not to scale.