

## 148 Streets Road, LENEVA, VIC 3691

### Great Offering In Wattle Glen Estate

This immaculate home is set in the highly sought-after Kinchington Estate, offering sweeping views of the surrounding hills.

The home's expansive open-plan living area is perfectly complemented by the entertainer's kitchen, complete with gas cooking and a generous walk-in pantry.

The master suite features a walk-in robe and private ensuite, while the remaining three queen-sized bedrooms all include built-in robes. A full family bathroom with bath, along with a spacious laundry, adds everyday practicality.

Outdoors, a large alfresco area with ceiling fan provides the ideal setting for year-round entertaining, overlooking the secure yard. Additional features include a remote double garage and quality finishes throughout.

Currently leased at \$550 per week until June 2026 with a potential rental return of \$570 - \$590 per week, this property presents an outstanding opportunity for both investors and homebuyers seeking a quality lifestyle in a premium location.

**TYPE:** For Sale

**INTERNET ID:** 21P6455

#### SALE DETAILS

**\$659,000**

#### CONTACT DETAILS

**Albury**

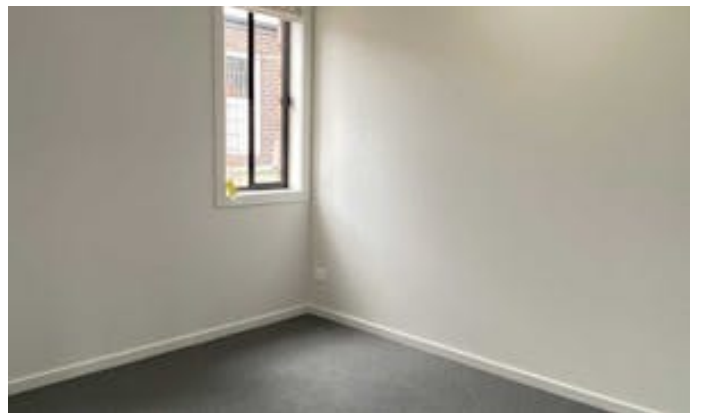
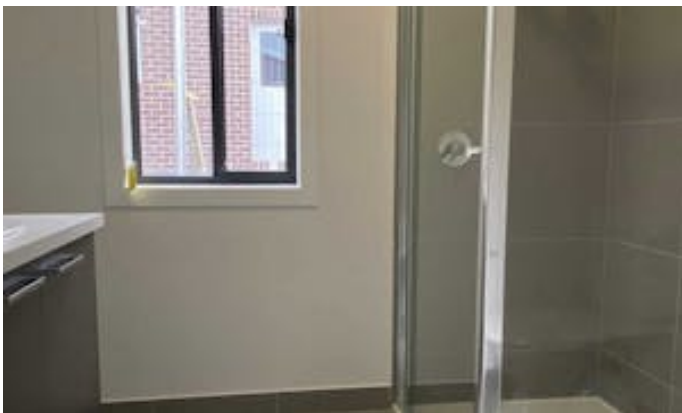
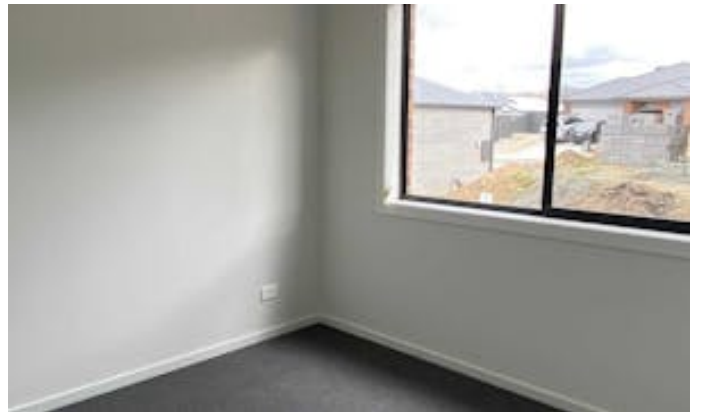
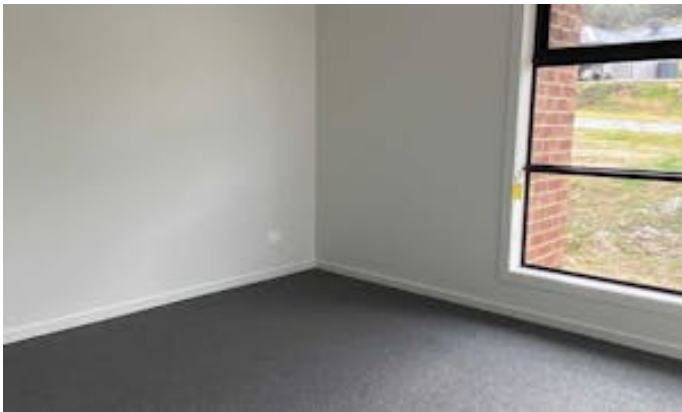
140 High Street  
WODONGA, VIC  
02 6021 2199

**Dean Star**

0407 685 580

<https://www.consumer.vic.gov.au/duediligencechecklist>

- Bedrooms: 4
- Bathrooms: 2
- Double garage









APPROX. INTERIOR LIVING AREA  
166.8 sq. m

Please note: This plan has been generated for advertising only  
and may not be exact.

Interested parties are to do their due diligence  
to verify any information provided in this plan.