



2 Carlisle Crescent, WODONGA, VIC 3690

A Big Block With Big Potential!

Set in a lovely, established pocket of Wodonga, this property sits proudly on a generous 1,088m² allotment, just moments from Whitebox Shopping Centre and Waves Aquatic Centre. It's a home with good bones, plenty of charm, and all the potential in the world to make it truly yours.

Inside, you'll find three comfortable bedrooms - the master with a walk-in robe and the others with built-ins - plus a full family bathroom with a separate toilet, and the bonus of a second toilet off the laundry. Two living zones mean there's room for everyone: a spacious front lounge with a built-in bar (a great space to utilise as a study nook) and formal dining, plus a second living space adjoining the galley-style kitchen. With timber cabinetry, a gas cooktop, electric wall oven, dishwasher, and breakfast bar, the kitchen has everything you need now, while also being the perfect canvas for your modern updates.

Year-round comfort is covered with refrigerated ducted cooling and heating, two gas wall furnaces, and ceiling fans throughout. Original features give it a retro vibe, but it's easy to see how a little vision could transform this into a stylish, contemporary family haven.

TYPE: For Sale

INTERNET ID: 21P8484

SALE DETAILS

\$659,000

CONTACT DETAILS

Albury

140 High Street
WODONGA, VIC
02 6021 2199

Dean Star

0407 685 580

Outdoors, the space really shines. An elevated covered entertaining area overlooks the backyard, established gardens, and a fully enclosed inground pool - ready for endless summers. There's also a separate double garage, adding practicality to the lifestyle on offer.

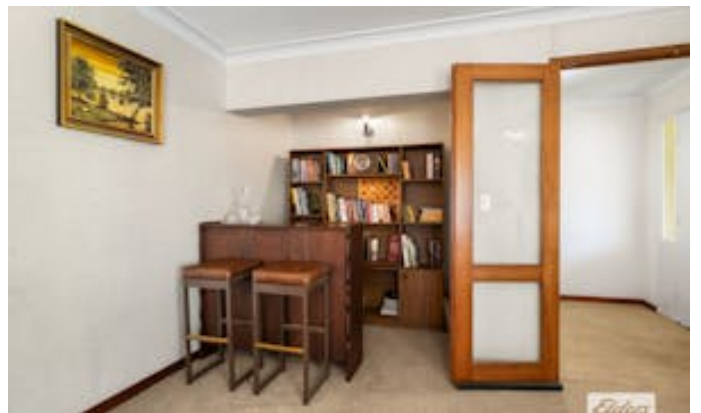
Whether you're a renovator looking for your next project, an investor seeking growth, or a young family ready to spread out and create memories, this home is a must-see.

Anticipated rental return of \$580 per week

For sale now - call today to arrange your inspection.

<https://www.consumer.vic.gov.au/duediligencechecklist>

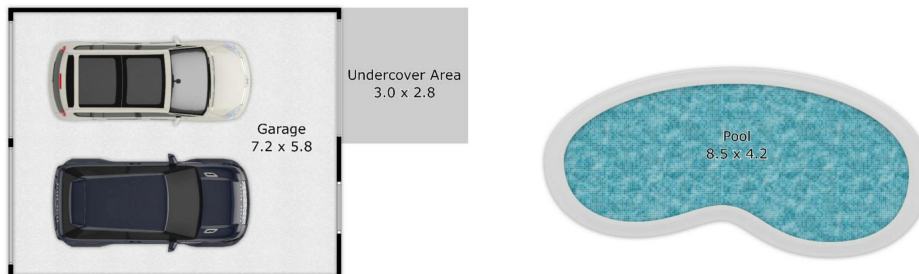
- Land Area 1,088.00 square metre
- Bedrooms: 3
- Bathrooms: 1
- Double garage











APPROX. INTERIOR LIVING AREA
133.9 sq. m

Please note: This plan has been generated for advertising only and may not be exact.

Interested parties are to do their due diligence to verify any information provided in this plan.