

20 Robbins Drive, EAST ALBURY, NSW 2640

Tree-Lined Eastern View Estate

Situated in the tranquil, tree-lined Eastern View Estate, this charming family home offers a blend of comfort and convenience, ideal for those seeking a relaxed lifestyle.

Featuring three family bedrooms, all with built-in robes, plus a master suite with built-in robes and full bathroom ensuite. Two spacious living zones, as well as a sitting area with gas log fireplace for cozy nights in. This home is designed with family living in mind.

Central to the home is the galley-style kitchen, complete with a gas cooktop, electric oven, breakfast nook, dishwasher, plenty of drawers, cupboards, and bench space, making it perfect for meal prep and entertaining. With ceiling fans throughout, a full family bathroom, refrigerated heating and cooling, 6.6kw solar and privacy tinted windows, this home was built for comfort.

Outside, the undercover alfresco invites year-round outdoor dining, a garden shed and raised garden beds for the green thumb. The 3-car remote lockup garage provides ample space for vehicles and storage.

TYPE: Sold

INTERNET ID: 21P8528

SALE DETAILS

\$809,000

CONTACT DETAILS

Albury

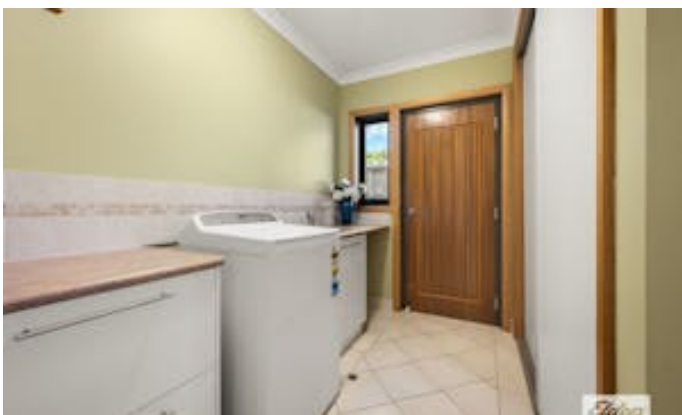
140 High Street
WODONGA, VIC
02 6021 2199

Jamie Maynard
0413 743 361

Located in close proximity to the Albury Base Hospital, Murray River, IGA supermarket, and the local watering hole, this home offers the perfect blend of suburban peace and urban convenience, making it an exceptional opportunity for families looking to settle in this sought-after area

- Land Area 774.00 square metres
- Bedrooms: 4
- Bathrooms: 2
- Car Parks: 3









APPROX. INTERIOR LIVING AREA
292.2 sq. m

Please note: This plan has been generated for advertising only
and may not be exact.
Interested parties are to do their due diligence
to verify any information provided in this plan.