



## 60 Cuthbert Street, KILLARA, VIC 3691

### Lifestyle Living in Sought After Riverside Estate

Riverside Estate continues to be one of the region's most sought after addresses, and it's easy to see why. With the Kiewa River, Huon Hill Reserve, walking tracks, and family parks all close by, plus Wodonga just a short drive away, this location strikes the perfect balance between nature and convenience.

Step inside to a welcoming formal entry that leads to a spacious master suite at the front of the home, complete with walk-in robe and private ensuite. A centrally positioned media room provides a cosy retreat, while the heart of the home offers an expansive open-plan family and meals area, seamlessly connected to the galley-style kitchen.

Three additional bedrooms with built-in robes are tucked away for privacy, serviced by a full family bathroom with separate toilet and a practical laundry.

#### Highlights you'll love:

- Modern kitchen with island bench, electric oven, gas cooktop, walk-in pantry, and generous fridge space
- Timber-look flooring, sheer curtains, and rattan feature lighting add warmth and style

The particulars contained herein are supplied for information only and shall not be taken as a representation in any respect on the part of the vendor or its agent. Interested parties should contact the nominated person or office for full and current details.

**TYPE:** For Sale

**INTERNET ID:** 21P8829

#### SALE DETAILS

**\$669,000 - \$690,000**

#### CONTACT DETAILS

**Albury**  
140 High Street  
WODONGA, VIC  
02 6021 2199

**Jamie Maynard**  
0413 743 361

- Ensuite and bathroom with contemporary finishes including grey tiling, timber-look vanities, and raised square basins
- Covered outdoor entertaining area overlooking a spacious rear yard ready for your personal touch
- Year round comfort with ducted evaporative cooling and ducted gas heating
- Double lock-up garage with remote access
- Easy-care 510m<sup>2</sup> allotment
- Potential rental amount of \$630 per week

This beautifully presented home delivers space, comfort, and lifestyle in one of Wodonga's most desirable estates – an opportunity not to be missed.

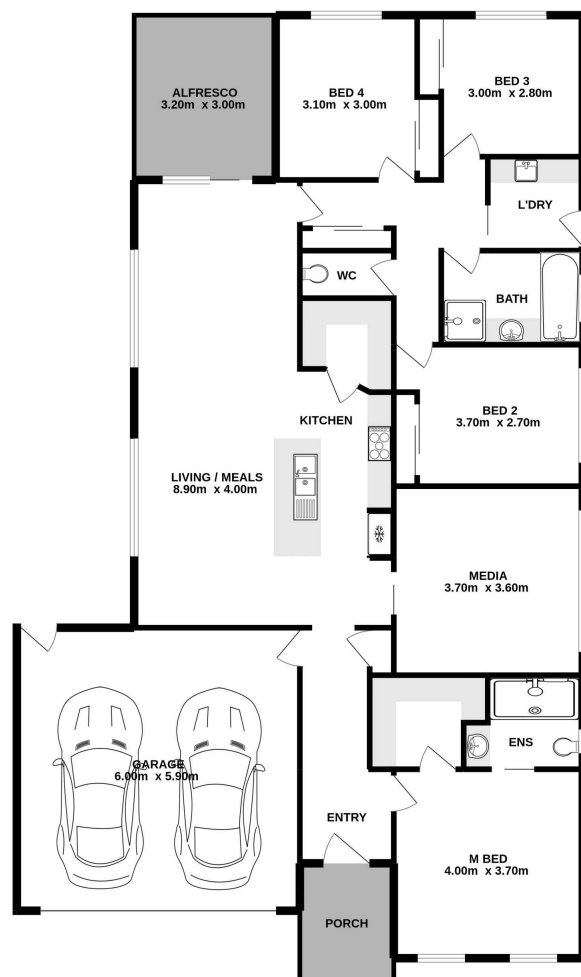
<https://www.consumer.vic.gov.au/duediligencechecklist>

- Land Area 510.00 square metres
- Bedrooms: 4
- Bathrooms: 2
- Double garage









Measurements are approximate. Not to Scale. Illustrative purpose only.