



21 Derwent Way, WODONGA, VIC 3690

Family Friendly Mix

With a super convenient location in Daintree Estate and family-sized proportions, say good bye to the landlord with this lovely home

- Fornal lounge, oversized family and dining area, with large and well-equipped kitchen
- 4 generous bedrooms with the master offering a WIR and ensuite
- family bathroom, big laundry, great storage and ducted heating and cooling
- Huge alfresco area, low maintenance 578m allotment

<https://www.consumer.vic.gov.au/duediligencechecklist>

- Land Area 578.00 square metres
- Bedrooms: 4
- Bathrooms: 2
- Double garage

TYPE: Sold

INTERNET ID: 21P9208

SALE DETAILS

\$600,000

CONTACT DETAILS

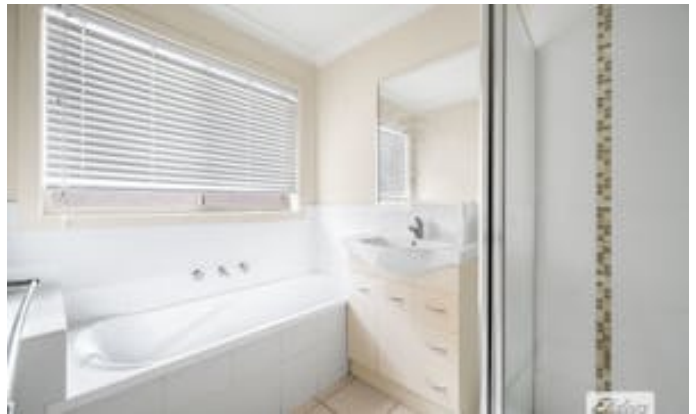
Albury

140 High Street
WODONGA, VIC
02 6021 2199

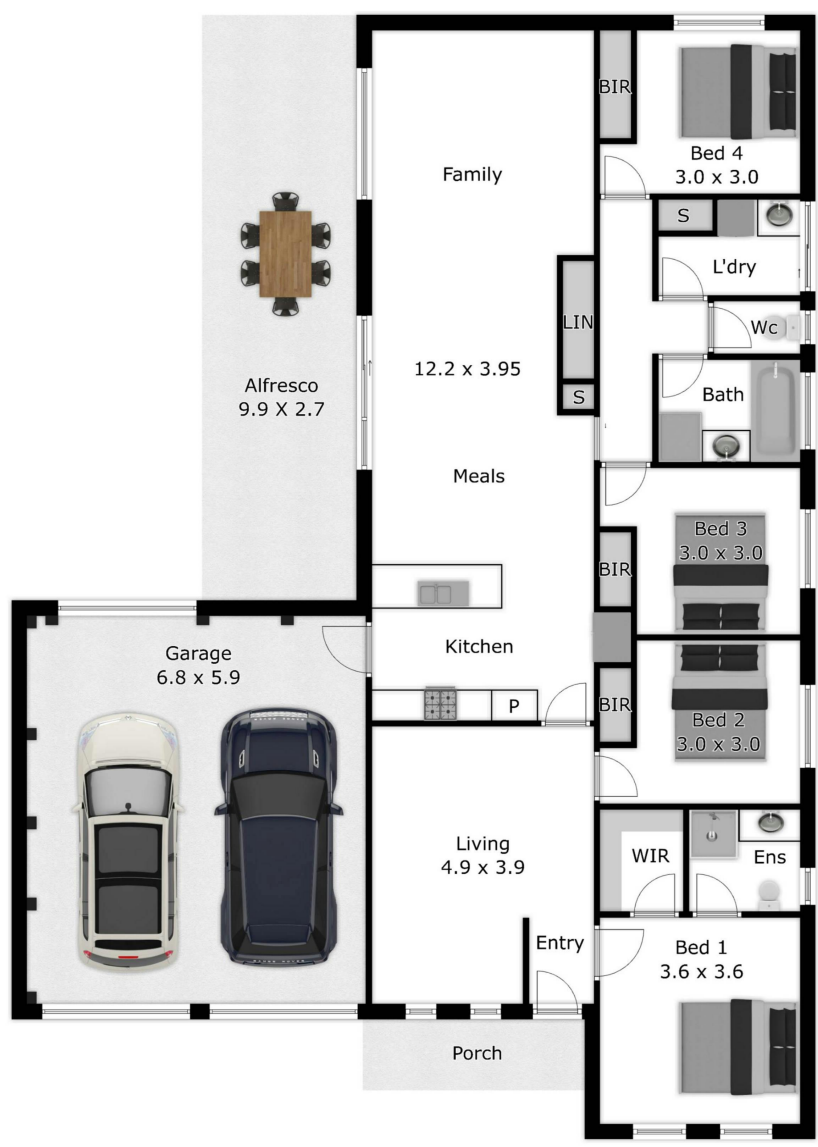
Manny Gonzalez

0400 478 218









APPROX. TOTAL AREA 222.8 sq. m
 Please note: This plan has been generated for advertising only
 and may not be exact.
 Interested parties are to do their due diligence
 to verify any information provided in this plan.