

## 15 Beadsworth Street, BARANDUDA, VIC 3691

### Modern Family Living in Beautiful Baranduda - Sold With Vacant Possession

If you're searching for a home that feels just right-comfortable, stylish, and quality built by Peter Bowen Homes for real life, this next to brand-new beauty set on 520m<sup>2</sup> in the heart of Baranduda might just be "the one."

Let's start with the essentials: four generous bedrooms, including a master suite positioned privately at the front of the home with a spacious walk-in robe and sleek ensuite. The family bathroom (with a separate toilet, because convenience is queen) serves the remaining bedrooms, all tucked away to create the perfect retreat for the kids-or guests you actually like.

Now let's talk living-because this house knows how to host. An open-plan family and dining area flows seamlessly into a modern kitchen with matte black finishes, a full butler's pantry, a big gas cooktop (yes, the good kind), underbench oven, and an island bench that says, "pull up a stool and stay a while." Step outside to an undercover entertaining area, ideal for BBQs, birthday parties, or just soaking up that golden afternoon light with a glass of wine.

Need a little grown-up space? The second lounge gives you options: media room, formal sitting area, zen den-you decide.

**TYPE:** For Sale

**INTERNET ID:** 21P9423

#### SALE DETAILS

**\$659,000**

#### CONTACT DETAILS

**Albury**

140 High Street  
WODONGA, VIC  
02 6021 2199

**Dean Star**

0407 685 580

Design-wise, it's all about easy modern living. Think timber-look floors, crisp tiles in all the right places, plush carpet where it counts, and high ceilings throughout. Comfort? Covered. With ducted gas heating and evaporative cooling, you'll be cozy all year long.

And the location? Perfection. Baranduda is a vibrant, growing community just a short drive from Wodonga. You've got IGA, the aquatic centre, parks, schools, childcare, and more practically at your doorstep.

It's modern living made easy-stylish, spacious, and move-in ready.

<https://www.consumer.vic.gov.au/duediligencechecklist>

- Land Area 520.00 square metres
- Bedrooms: 4
- Bathrooms: 2
- Double garage



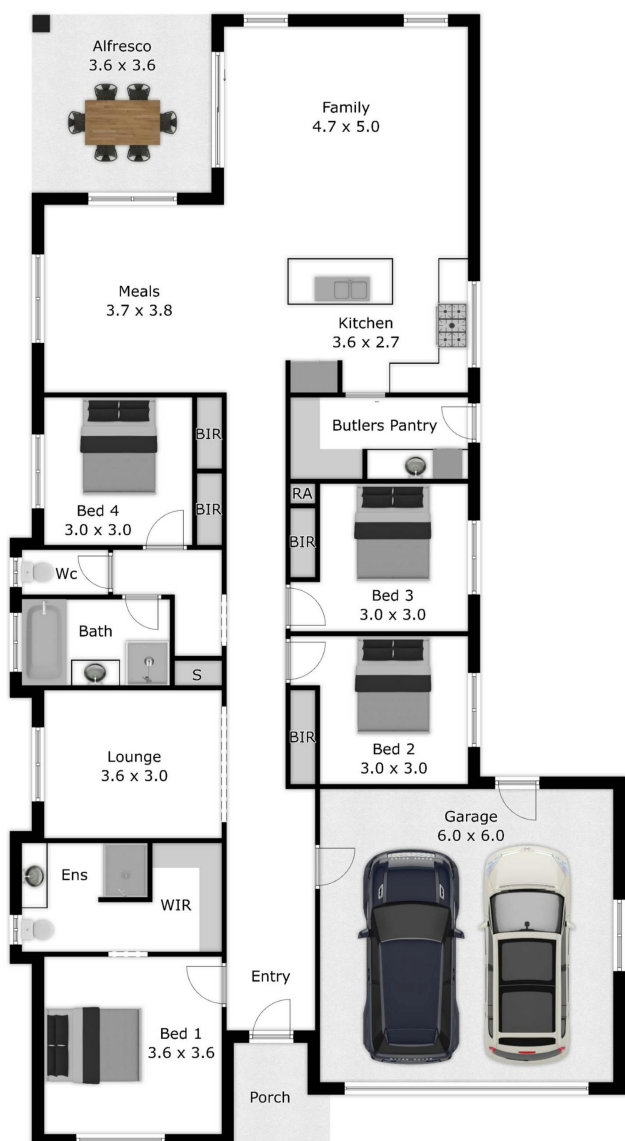












APPROX. INTERIOR LIVING AREA

192.4 sq. m

Please note: This plan has been generated for advertising only and may not be exact.

Interested parties are to do their due diligence to verify any information provided in this plan.