



## 4 Cottlesloe Court, WODONGA, VIC 3690

### Golfside Glamour with a Sophisticated Edge

Exceptional family residence, perfectly positioned with elevated views across the Wodonga Golf Course.

From the moment you arrive, the striking cedar facade and standout street appeal set the tone for what lies within. Step inside and you'll immediately appreciate the scale, quality inclusions, and contemporary Trentwood Homes design that make this home truly special.

Bathed in natural light, the main living area features expansive windows framing uninterrupted parkland reserve views. The polished concrete flooring and modern finishes create a stylish yet welcoming atmosphere, complemented by multiple living zones including a formal lounge and a spacious open-plan living/dining area.

At the heart of the home, the gourmet kitchen is designed to impress with stone benchtops, a large pantry, quality appliances, soft-close drawers, and abundant storage.

A private parents' retreat occupies its own wing, with a grand master suite featuring

The particulars contained herein are supplied for information only and shall not be taken as a representation in any respect on the part of the vendor or its agent. Interested parties should contact the nominated person or office for full and current details.

**TYPE:** For Sale

**INTERNET ID:** 21P9456

**SALE DETAILS**

**\$929,000**

**CONTACT DETAILS**

**Albury**

140 High Street  
WODONGA, VIC  
02 6021 2199

**Jamie Maynard**  
0413 743 361

dual walk-in robes and a luxurious ensuite complete with double vanity, double shower, and separate toilet. The remaining three bedrooms, each with built-in robes, are serviced by a sleek family bathroom with freestanding bath, walk-in shower, and separate toilet.

Perfectly suited for entertaining, the property offers two outdoor living options: an undercover alfresco with ceiling fan and TV point, plus a firepit zone, both overlooking the golf course. Whether hosting a barbeque or unwinding with a glass of wine by the fire, these spaces cater to every occasion.

Additional features include ducted gas heating, evaporative cooling, square-set cornices, a double remote garage, and container storage currently used as an art studio. Set on a generous 735m<sup>2</sup> block with beautifully landscaped gardens.

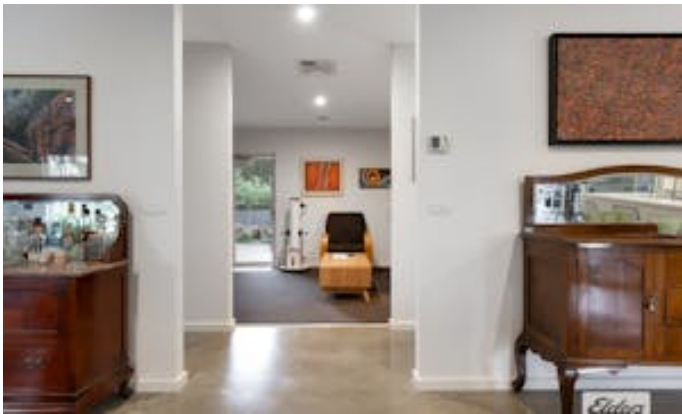
This is more than a home – it's a lifestyle of comfort, sophistication, and uninterrupted golf course views.

<https://www.consumer.vic.gov.au/duediligencechecklist>

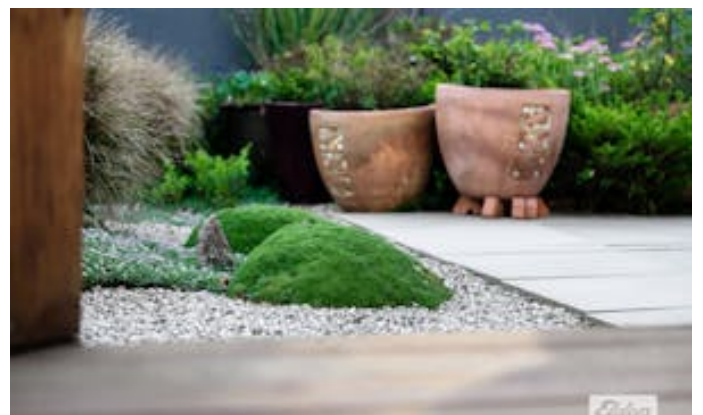
- Land Area 735.00 square metres
- Building Area: 256.00 square metres
- Bedrooms: 4
- Bathrooms: 2
- Double garage







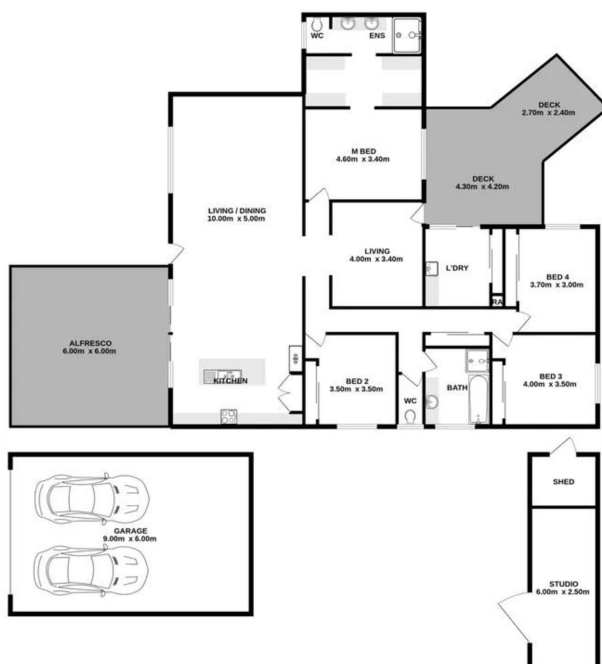








GROUND FLOOR  
255.9 sq.m. approx.



TOTAL FLOOR AREA: 255.9 sq.m. approx.  
Measurements are approximate. Not to Scale. Illustrative purpose only.  
Made with Metaphor 12/2022