



2/101 Hammer Street, HOWLONG, NSW 2643

Charming & Convenient Unit

Nestled in a quiet and well-maintained location, this delightful two bedroom unit presents a fantastic opportunity for first home buyers, downsizers, or savvy investors. With a host of features designed for comfort and practicality, this low-maintenance gem is perfectly positioned just moments from medical facilities and a short distance to the heart of town.

The two generously sized bedrooms feature built-in robes, offering ample storage and functionality without compromising on space or style. While the well-appointed central full bathroom ensures convenience with a separate toilet, making busy mornings easier and guest visits more private. Furthermore an open-plan living and dining areas provide a welcoming space to relax, unwind or host guests in style.

The kitchen features electric cooking appliances and a dishwasher for easy clean-up, along with plentiful bench and cupboard space â## perfect for home cooks and entertainers alike. Ensure comfort all year round with a gas wall furnace for those cosy winter nights and a split system for efficient heating and cooling throughout the seasons.

Step outside to a private undercover entertaining area â## ideal for weekend BBQs,

The particulars contained herein are supplied for information only and shall not be taken as a representation in any respect on the part of the vendor or its agent. Interested parties should contact the nominated person or office for full and current details.

TYPE: For Sale

INTERNET ID: 21P9501

SALE DETAILS

\$420,000

CONTACT DETAILS

Albury

140 High Street
WODONGA, VIC
02 6021 2199

Kristy Leathem
0419 551 224

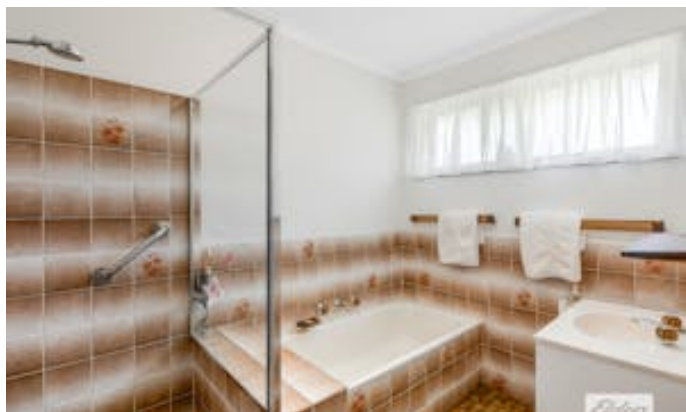
alfresco dining, or simply enjoying your morning coffee. The backyard offers the perfect balance of greenery and low-upkeep landscaping, complete with an outdoor awning for added shade and comfort. Additional practical extras outside include a single carport plus a single lock-up garage, providing secure parking or additional storage space, a garden shed for tools and outdoor equipment and easy-care grounds that are perfect for those seeking a lock-and-leave lifestyle.

Enjoy the convenience of living close to local medical facilities, shops, cafes, and essential services. With the town centre just a short distance away, everything you need is within easy reach â## whether you're walking, driving or catching public transport.

This charming unit offers a lifestyle of ease and accessibility without compromising on space or comfort. Whether you're looking for your first home, a secure downsize, or a smart addition to your investment portfolio, this property is sure to impress.

- Bedrooms: 2
- Bathrooms: 1
- Car Parks: 2





2/101 HAMMER STREET, HOWLONG



Elders Real Estate

All measurements are approximate. This floor plan is for marketing purposes and is to be used as a guide only.
Floor plan prepared by Elevated Media.