

13 Ferndale Road, LENEVA, VIC 3691

Welcome Home: Easy Living in Kinchington Estate

Imagine this: you pull into your double garage (remote-controlled, of course - because who wants to get out of the car?), walk straight into your cozy new home, and immediately feel that sense of ahhh, I'm home.

Tucked into a lovely elevated spot in the brand-new Kinchington Estate, this three-bedroom beauty is just waiting for its next chapter. Whether you're starting fresh, scaling down, or investing smart - this home totally gets it.

The master bedroom? Think walk-in robe and a well-appointed ensuite that actually feels like yours, not just a box with a shower. The other two bedrooms are equally generous, each with built-in robes and easy access to a sparkling family bathroom - complete with bath, shower, vanity, and a separate toilet (yes, thank you!).

The heart of the home is where it's at - a warm, open kitchen with a walk-in pantry (hello, storage goals), breakfast bar, and a 900mm freestanding cooker (gas cooktop and electric oven - you know, the good kind). And yes, there's a dishwasher. Because life.

TYPE: For Sale

INTERNET ID: 21P9514

SALE DETAILS

\$615,000

CONTACT DETAILS

Albury

140 High Street
WODONGA, VIC
02 6021 2199

Dean Star

0407 685 580

From the kitchen, you're overlooking a spacious dining and family area that flows effortlessly into an undercover entertaining space - perfect for sunset drinks, a weekend BBQ, or just a quiet moment with a book.

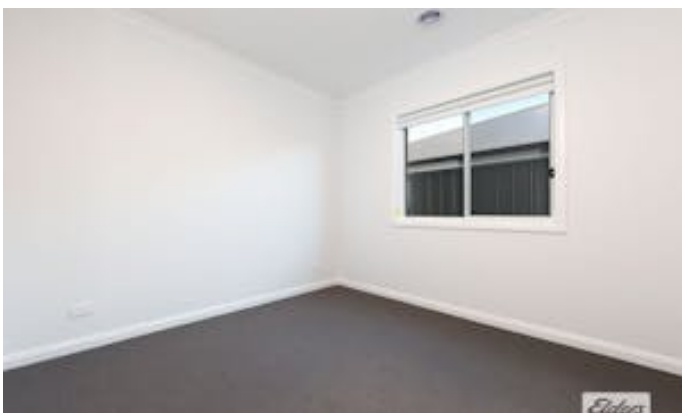
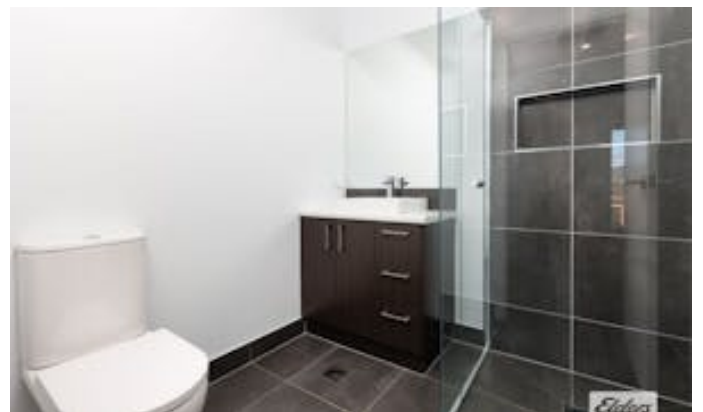
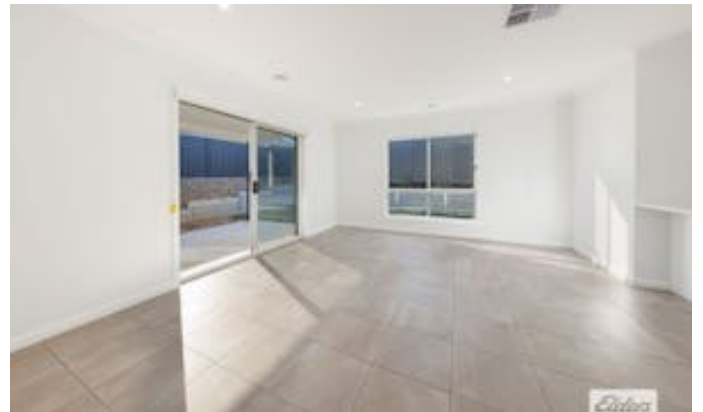
Let's not forget: ducted evaporative cooling, ducted gas heating (goodbye freezing mornings), solar hot water low-maintenance backyard (because you've got better things to do), and practical tiling in all the right places.

This isn't just a house. It's a well-rounded, thoughtful home designed for people who appreciate comfort without the fuss.

Potential rental return of \$560 - \$570 per week.

<https://www.consumer.vic.gov.au/duediligencechecklist>

- Land Area 449.00 square metres
- Bedrooms: 3
- Bathrooms: 2
- Double garage







This floor plan including dimensions are approximate and are for illustrative purposes only and should be used purely as a guide. No guarantee can be given to accuracy of the information contained, and interested parties should conduct their own enquires.