



509 Cornishtown Road , CORNISHTOWN, VIC 3683

509 Cornishtown Road, Cornishtown VIC – Lifestyle, Land & Luxury Living

13.66 hectares, 33.76 acres

Set on an impressive 33.75 acres (13.6 hectares), this beautifully presented property offers the perfect balance of rural lifestyle, modern living, and equine facilities.

Just a short drive to Chiltern, Rutherglen, and Wodonga, the location combines peaceful countryside living with easy access to regional centres, schools, wineries, and the Hume Freeway.

Residence

Step inside a thoughtfully designed home showcasing four spacious bedrooms and two bathrooms, complete with:

- Master suite featuring expansive walk-in robes and generous storage

TYPE: For Sale

INTERNET ID: 21P9530

SALE DETAILS

\$1,550,000

CONTACT DETAILS

Albury

140 High Street
WODONGA, VIC
02 6021 2199

Brendan Smith
0438 447 201

- Luxurious en-suite with cast iron bathtub, free-standing vanity, underfloor heating, and premium Australian-made fittings
- Brand new kitchen never used, with a Westinghouse induction cooktop, 900mm oven, dishwasher, retracting blade ceiling fan, massive butler's pantry, and abundant storage
- Dining room framed by double-glazed French doors and tri-fold windows that invite natural light and country views
- Sitting room with a cozy wood fireplace, ideal for winter evenings
- Polished wooden floorboards and architectural ceiling fans throughout
- Built-in robes to all bedrooms plus excellent storage across the home

Infrastructure & Shedding

This property is exceptionally equipped for equine, livestock, and machinery needs:

- Horse stables (11.2m x 6.2m)
- Two enclosed sheds (12m x 9m and 6m x 6m)
- Two large carports (7.8m x 9m and 7m x 7.4m)
- Stockyards, Lysaght grain silo, and an array of farm machinery including a Ford 4000 tractor, slasher, and hay baler

Land & Water

Perfectly set up for grazing or horses, the property is divided into six separate paddocks, each with solid fencing. Water security is assured with two large dams, making the property ideal for livestock and lifestyle pursuits.

Lifestyle & Location

Cornishtown is renowned for its scenic rural landscapes and close-knit community. From here, you'll enjoy easy access to the wine region of Rutherglen, historic Chiltern, and the major regional hub of Wodonga for schools, shopping, and healthcare. Outdoor enthusiasts will love the proximity to reserves and national parks, walking trails, and equestrian networks, all while enjoying the privacy and space of your own acreage.

Key Highlights:

- 4-bedroom, 2-bathroom home with luxury finishes
- Brand new designer kitchen and butler's pantry

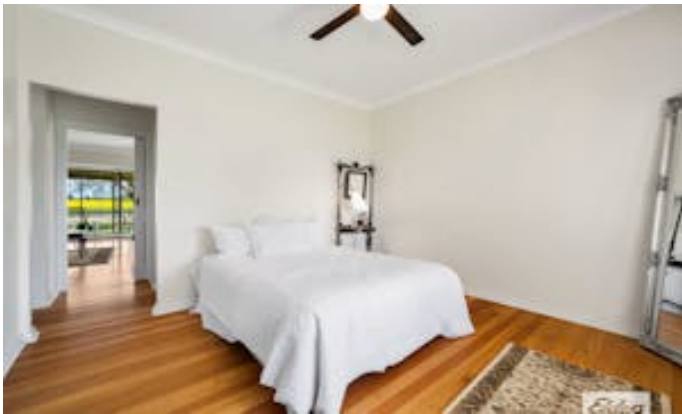
- Horse stables, stockyards, multiple sheds & carports
- 33.75 acres with 6 paddocks & 2 dams
- Prime position close to Chiltern, Rutherglen & Wodonga

This is a rare opportunity to secure a versatile lifestyle property with first-class infrastructure in a highly desirable location.

- Land Area 13.6621 hectares
- Bedrooms: 4
- Bathrooms: 3

HOMESTEAD

Bedrooms	4
Bathrooms	3











APPROX. INTERIOR LIVING AREA
244.3 sq. m
Please note: This plan has been generated for advertising only
and may not be exact.
Interested parties are to do their due diligence
to verify any information provided in this plan.

