



200 Bandiana Link Road, WODONGA, VIC 3690

De Kerilleau Homestead – A Rare Piece of Local History, Wrapped in Beauty and Space

There are homes you admire and then there are homes that simply take your breath away. De Kerilleau Homestead sits comfortably in that second category - a grand, graceful Federation masterpiece set on 30 enchanting acres with Wodonga Creek access, sweeping views, and a presence that feels both iconic and wonderfully welcoming.

This double red-brick home is one of the region's most recognisable properties, once home to a much-loved wedding venue and still surrounded by the kind of established gardens that make you slow down and soak it all in. Framed by mature trees, ornate front verandah and an upper balcony with cast iron finishes and cream brick window arches, the home feels timeless - like something from a beautiful old film, but with all the comfort of modern living.

Inside, the main residence unfolds over two levels, offering five generous bedrooms and multiple spaces made for lingering conversations, long lunches, or escaping with a good book with open fire places an extra drawcard for winter ambience. Every angle invites light, charm, and a sense of history you can truly feel highlighted by high ceilings, spiraling staircase and ornate cornices and ceiling roses.

TYPE: Sold

INTERNET ID: 21P9752

SALE DETAILS

Contact Agent

CONTACT DETAILS

Albury

140 High Street
WODONGA, VIC
02 6021 2199

Dean Star

0407 685 580

A cottage alongside the home provides further living with two bedrooms, kitchen and meals area and bathroom that is also conveniently accessed from outside for post garden clean-ups!

Step outside, and the magic deepens. Wander through the lush gardens, cool off in the inground swimming pool, enjoy the stillness of the dam, or stroll toward the Murray River - a privilege rarely offered and always treasured. With 30 acres to explore, it's the kind of property that lets you live big, breathe deep, and savour complete privacy.

All of this, and yet you're only a short drive from Albury##Wodonga. Close enough for convenience, far enough for peace - and absolutely perfect for those seeking a home with soul, scale, and significance.

A once-in-a-generation opportunity to own a landmark estate. If you've ever dreamed of a life that feels both cinematic and deeply grounding## this might just be the one.

Zoned Residential.

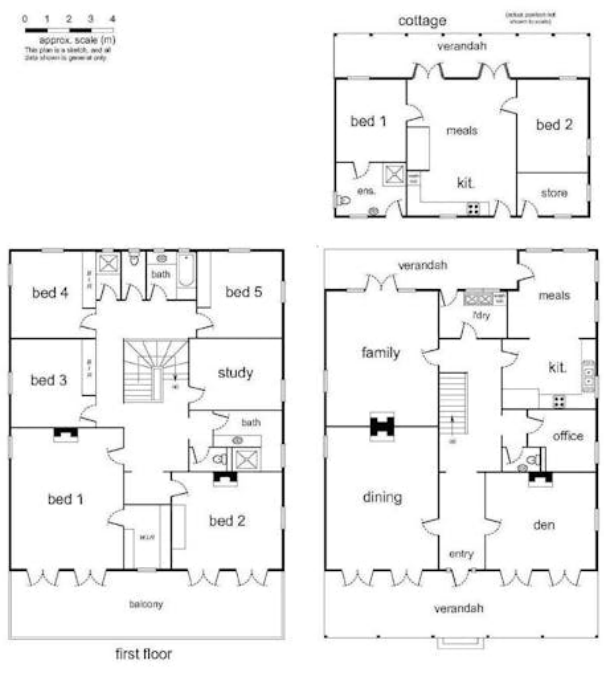
<https://www.consumer.vic.gov.au/duediligencechecklist>

- Land Area 30 acres
- Bedrooms: 7
- Bathrooms: 4
- Double garage









De Kerilleau Homestead, Wodonga