



657 Ryan Road, GLENROY, NSW 2640

Big Block. Prime Position. Endless Potential.

Positioned directly opposite Glen Park and just minutes from the Albury CBD, 657 Ryan Road, Glenroy offers a rare chance to secure a high-exposure property on a generous 1,132m²+ allotment with outstanding flexibility and potential.

The brick veneer home is occupy or rent-ready, making it ideal for investors seeking immediate rental potential, or owner-occupiers wanting to move in and plan ahead.

What really sets this property apart is the excellent access, extensive carports and outstanding rear shed â## a perfect fit for tradespeople, home-based operators, or anyone needing serious space for tools, trailers, boats or caravans.

With Glen Park at your front door and the Albury CBD only minutes away, this is a property that works today and makes even more sense long term â## whether youâ##re investing, occupying, land-banking or exploring future potential (STCA).

Opportunities with this combination of land size, position and utility are increasingly becoming harder to find.

TYPE: For Sale

INTERNET ID: 21P9772

SALE DETAILS

Inviting offers!

CONTACT DETAILS

Albury

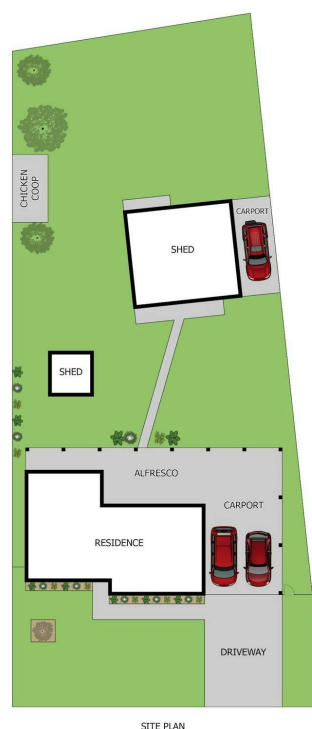
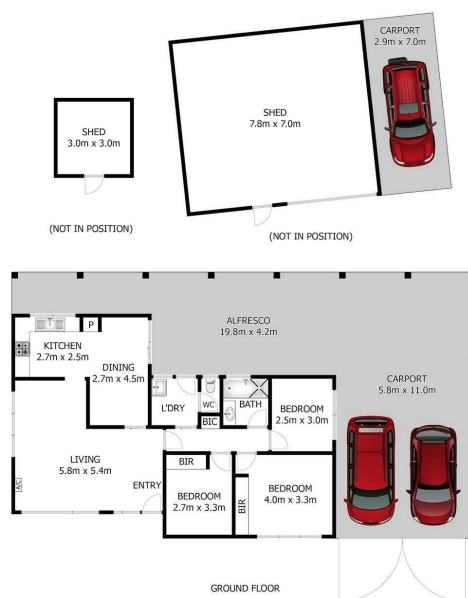
140 High Street
WODONGA, VIC
02 6021 2199

Tristan Wright
0411 434 136

- Land Area 1,132.00 square metre
- Bedrooms: 3
- Bathrooms: 1
- Single garage
- 3 car carport







Whilst bwrn.com.au has made every attempt to ensure the accuracy of the floor plan contained here, measurements are approximate and no responsibility is taken for any error, omission, or mis-statement. This plan is for illustrative purposes only.



657 Ryan Road, Glenroy

Elders

Real Estate



Whilst bwrn.com.au has made every attempt to ensure the accuracy of the floor plan contained here, measurements are approximate and no responsibility is taken for any error, omission, or mis-statement. This plan is for illustrative purposes only.



657 Ryan Road, Glenroy



Real Estate