



175 Golf Club Drive, HOWLONG, NSW 2643

Modern Contemporary Living at Its Finest

Set in a highly sought-after pocket just moments from the local golf course, this near-new residence delivers a flawless blend of style, comfort and low-maintenance luxury. Thoughtfully designed with high ceilings and abundant natural light throughout, the home offers effortless modern living with quality finishes at every turn.

Featuring three generous bedrooms, the home is anchored by a full master suite complete with a walk-in robe and a beautifully appointed ensuite. The remainder of the home enjoys its own separate toilet and dedicated powder area, creating a private retreat ideal for busy mornings. The remaining bedrooms include built-in robes and are serviced by a sparkling central bathroom.

The heart of the home is the expansive open plan kitchen, dining and living area-perfect for everyday living and easy entertaining. The contemporary kitchen boasts gas cooking, a dishwasher, walk-in pantry, and excellent storage throughout. Large windows invite natural light to pour in, enhancing the sense of space and warmth.

Step outside to a superb undercover entertaining area equipped with roller blinds, a ceiling fan, and durable aggregate flooring. This inviting space is ideal for hosting gatherings in any season and overlooks a neat, low-maintenance backyard.

The particulars contained herein are supplied for information only and shall not be taken as a representation in any respect on the part of the vendor or its agent. Interested parties should contact the nominated person or office for full and current details.

TYPE: For Sale

INTERNET ID: 21P9820

SALE DETAILS

\$729,000

CONTACT DETAILS

Albury

140 High Street
WODONGA, VIC
02 6021 2199

Kristy Leathem

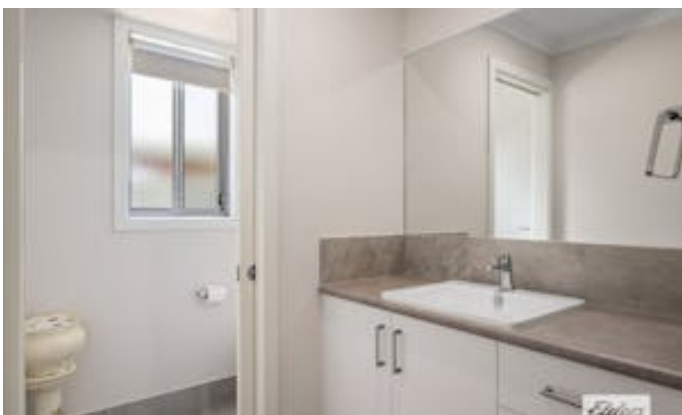
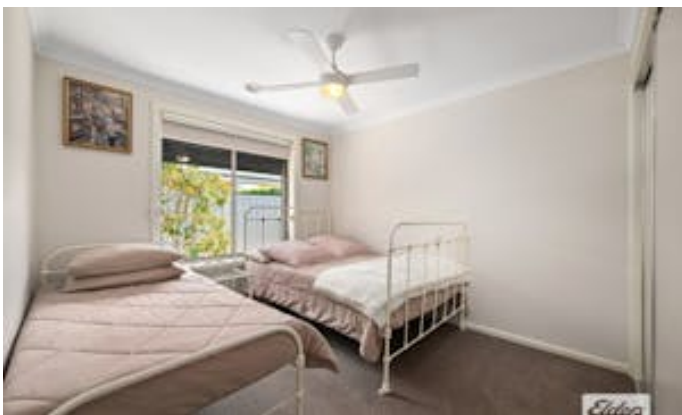
0419 551 224

Double-glazed windows, ducted heating and cooling, and ceiling fans throughout ensure comfort year-round. A double lock-up garage with internal access provides secure parking, while side access adds further practicality for storage of trailers or recreational equipment.

This property delivers premium contemporary living with nothing left to do but move in and enjoy. Perfect for downsizers, young families, or anyone seeking comfort, style and convenience in a highly desirable location.

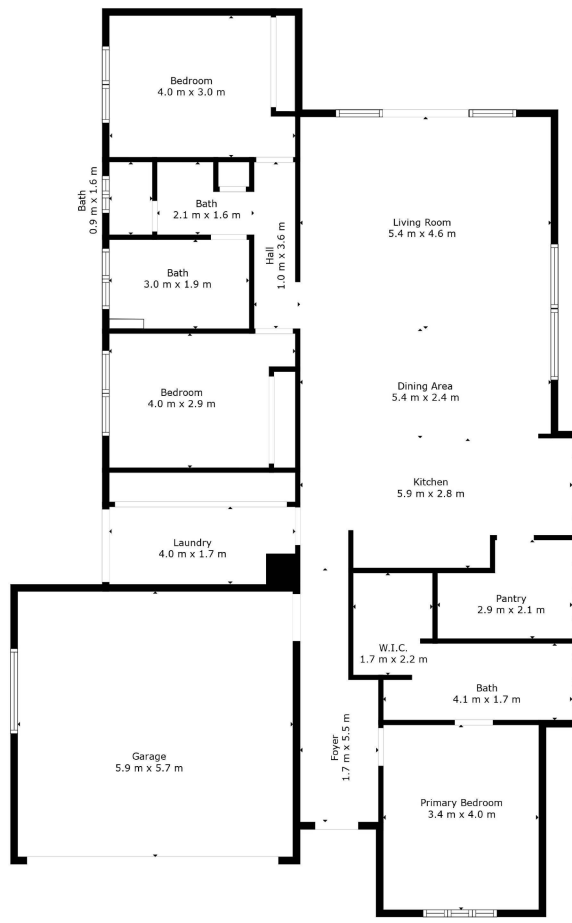
- Land Area 606.00 square metres
- Bedrooms: 3
- Bathrooms: 2
- Car Parks: 2











TOTAL: 141 m²
FLOOR 1: 141 m²
EXCLUDED AREAS: GARAGE: 34 m², WALLS: 11 m²

Floorplan Is For Illustrative Purposes Only And May Not Reflect Exact Dimensions Or Layout. Produced By Little Brother Media