

56 Jennings Boulevard, LENEVA, VIC 3691

Are You Ready?

Completed to an exceptional standard, this brand new four-bedroom Afonso-built home on a 770m2 Allotment delivers modern comfort, quality finishes, and effortless family living in the ever popular Leneva Valley Estate.

Thoughtfully designed with family functionality in mind, the home offers two separate living zones. A welcoming second lounge provides flexibility as a media room, kids' retreat, or quiet sitting area, while the open-plan living and dining space forms the heart of the home.

The stylish central kitchen features stone benchtops, KitKat feature splashback tiling, dishwasher, and a generous walk-in pantry, perfectly positioned to service the main living zone and ideal for both everyday living and entertaining.

The master bedroom is privately located and includes a well-appointed ensuite, while the remaining three bedrooms are serviced by a full family bathroom with a separate toilet, ideal for busy households.

Year-round comfort is ensured with ducted gas heating and evaporative cooling, double

The particulars contained herein are supplied for information only and shall not be taken as a representation in any respect on the part of the vendor or its agent. Interested parties should contact the nominated person or office for full and current details.

TYPE: For Sale

INTERNET ID: 21P9835

SALE DETAILS

\$779,000

CONTACT DETAILS

Albury

140 High Street
WODONGA, VIC
02 6021 2199

Jamie Maynard
0413 743 361

lock up garage and the home is fully landscaped and fenced, allowing you to move straight in and enjoy from day one.

Located in the highly regarded Leneva Valley Estate, the property is surrounded by quality new homes and enjoys convenient access to schools, childcare centres, sporting facilities, parks, and walking tracks. With easy connections to the Wodonga CBD and Albury, this family-friendly estate continues to be a popular choice for owner-occupiers and investors alike.

A fantastic opportunity to secure a brand new, low-maintenance home in a growing and well-connected location.

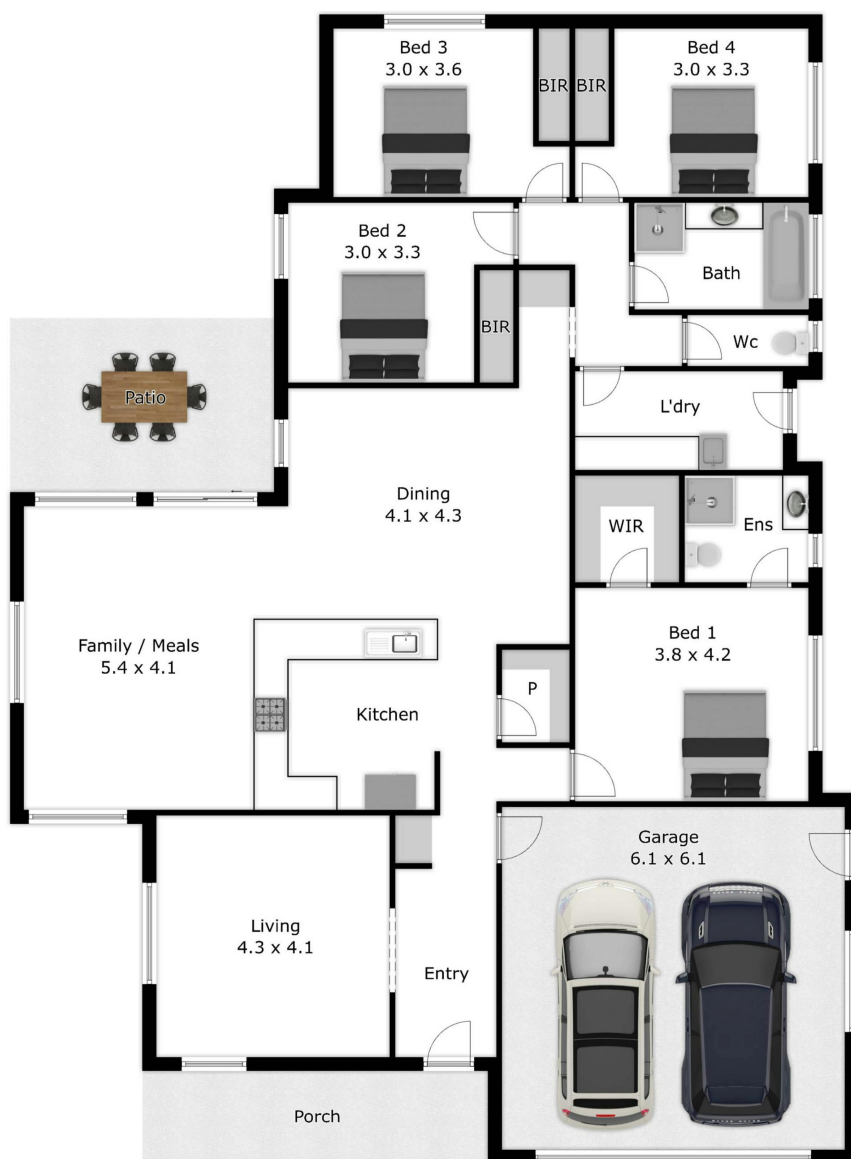
<https://www.consumer.vic.gov.au/duediligencechecklist>

- Land Area 770.00 square metres
- Bedrooms: 4
- Bathrooms: 2
- Double garage









Please note: This plan has been generated for advertising only and may not be exact.
Interested parties are to do their due diligence to verify any information provided in this plan.