

87 Bremer Avenue, LENEVA, VIC 3691

A Quality Home with Secure Tenancy and Strong Returns

Welcome to 87 Bremer Drive, Wodonga - a home that balances family-sized proportions with everyday elegance and a layout that simply works.

From the moment you step inside, the sense of space is undeniable. A generous front living room sets a relaxed tone, while the master suite is thoughtfully positioned at the front of the home, complete with a stylish ensuite and a walk-in robe cleverly tucked behind the bedhead - a beautiful retreat at the end of the day.

Designed for busy households and effortless entertaining, the home offers three separate living zones. The heart of the home unfolds to the rear, where the open-plan kitchen, meals, and family area come together seamlessly. The kitchen is both functional and refined, featuring an island bench, gas cooktop, electric under-bench oven, dishwasher, walk-in pantry, and statement pendant lighting - perfect for everything from weeknight dinners to weekend catch-ups.

Sliding doors connect the main living area to a covered outdoor entertaining zone, extending the living space and creating an easy indoorâ## outdoor flow.

TYPE: For Sale

INTERNET ID: 21P9854

SALE DETAILS

\$789,500

CONTACT DETAILS

Albury

140 High Street
WODONGA, VIC
02 6021 2199

Dean Star

0407 685 580

Accommodation is generous and flexible. Four additional bedrooms all include built-in robes and are serviced by a full family bathroom with a separate toilet. A dedicated study provides the option to work from home or convert into a fifth bedroom if required. Adding further convenience is a powder room and third toilet located off the front living area - ideal for guests.

Comfort is assured year-round with ducted heating and cooling, while the double lock-up garage with remote access completes the picture.

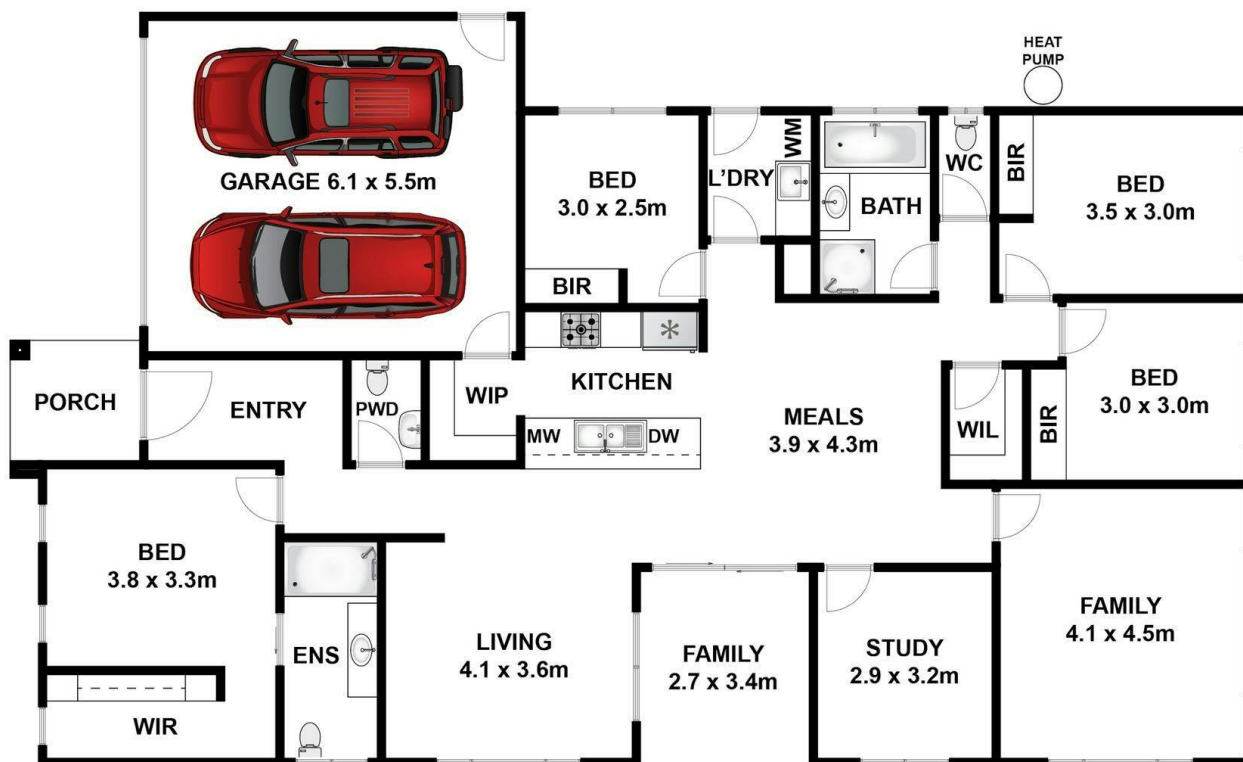
Currently tenanted until August 2026 at \$650 per week, this property presents a smart opportunity for investors seeking a quality home with a secure return, or future owner-occupiers planning ahead.

Stylish, spacious, and superbly laid out - this is a home that feels as good as it looks.

<https://www.consumer.vic.gov.au/duediligencechecklist>

- Land Area 603.00 square metres
- Bedrooms: 5
- Bathrooms: 2
- Double garage





Whilst bwrn.com.au has made every attempt to ensure the accuracy of the floor plan contained here, measurements are approximate and no responsibility is taken for any error, omission, or mis-statement. This plan is for illustrative purposes only.



87 Bremer Avenue, Leneva

Elders Real Estate