

155 Clarke Street, HOWLONG, NSW 2643

Impressive Family Living on a Grand 2023m² Block

Built by award winning builder Scott James, this unique build set in a fantastic location offers exceptional space both inside and out, delivering comfort, functionality, and versatility. Designed to accommodate growing families and effortless entertaining, this residence is packed with features that make everyday living a pleasure.

The home boasts three generous bedrooms, two with built-in robes and a spacious master bedroom complete with a private ensuite and walk in robe. A full central bathroom with separate toilet services the remaining bedrooms, while the large laundry offers ample storage and practicality.

At the heart of the home is a spacious, well-appointed kitchen, featuring a walk in pantry, plenty of cupboard and bench space, gas cooking, and a dishwasher, making meal preparation and entertaining easy. Multiple living zones provide flexibility for families of all sizes, with three separate living areas, including a rumpus room and a flexible formal lounge or office space, this home is perfect for relaxing evenings.

Year-round comfort is assured with ducted heating and ducted cooling, complemented by a split system heating and cooling unit for added convenience. A built-in bar adds an extra touch of luxury, ideal for hosting family and friends.

The particulars contained herein are supplied for information only and shall not be taken as a representation in any respect on the part of the vendor or its agent. Interested parties should contact the nominated person or office for full and current details.

TYPE: For Sale

INTERNET ID: 21P9946

SALE DETAILS

Contact Agent

CONTACT DETAILS

Albury

140 High Street
WODONGA, VIC
02 6021 2199

Kristy Leathem
0419 551 224

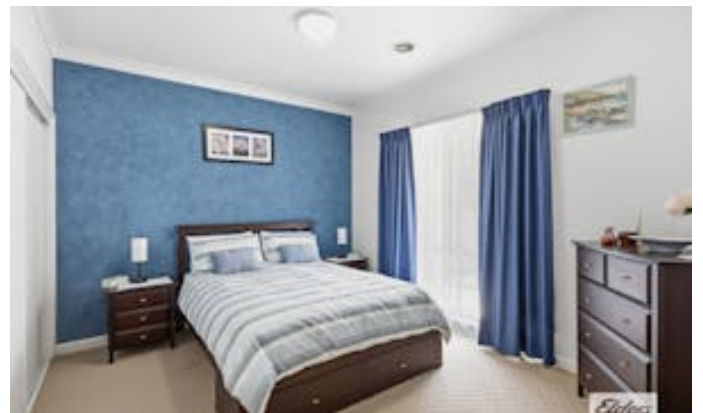
Step outside to discover a truly impressive undercover entertaining area, complete with ceiling fans, a wood fire, and pull-down blinds, allowing you to enjoy outdoor living in all seasons. The fully enclosed yard offers privacy and space for children and pets, while rear yard access, an undercover carport, and a shed provide excellent storage and parking options.

Additional features include a double lock-up garage, expansive outdoor space, and a layout that perfectly suits large or extended families.

This is a rare opportunity to secure a spacious, feature-packed family home on a substantial block in a highly sought-after location just minutes from the local Howlong Golf Course.

An inspection is highly recommended to truly appreciate everything this outstanding property has to offer including lifestyle, comfort, and room to grow.

- Land Area 2,023.00 square metres
- Bedrooms: 3
- Bathrooms: 2
- Car Parks: 2

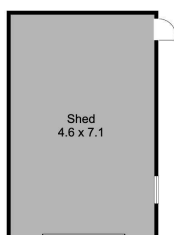








155 CLARKE STREET, HOWLONG



Elders Real Estate

All measurements are approximate. This floor plan is for marketing purposes and is to be used as a guide only.
Floor plan prepared by Elevated Media.