



4580 Riverina Highway, HOWLONG, NSW 2643

Country Charmer With Room to Move!

Situated directly across the road from the well known Howlong Golf Resort, is this beautifully presented Davis Sanders home sitting on a spacious yet easily maintained 5009m² (approx.) block just waiting for the right family to call it home.

Be welcomed into the home by a formal entry way with vaulted ceiling, leading into a light-filled lounge room with split system. Directly off the lounge is the 4th bedroom/study and spacious master bedroom, with a great walk in robe and lovely en-suite with a generous sized vanity with plenty of storage and a built in spa bath. The modern, well-equipped kitchen is central in the open plan living area, and boasts timber-look cabinetry, stainless steel appliances including 900mm five burner electric cook top and semi-integrated dishwasher, appliance cupboard, feature lighting, great bench space and large walk in pantry. Enjoy your breakfast being surrounded by the morning sun in the light and bright meals area with vaulted ceiling.

Entertaining your friends and family will be a joy with a huge undercover outdoor area overlooking the yard which also has an in ground pool.

Further features of the home include:

- In floor heating plus three split system units
- Ceiling fans to three bedrooms

The particulars contained herein are supplied for information only and shall not be taken as a representation in any respect on the part of the vendor or its agent. Interested parties should contact the nominated person or office for full and current details.

TYPE: Sold

INTERNET ID: 22165114

SALE DETAILS

\$472,500

CONTACT DETAILS

Elders Limited
140 High Street
WODONGA, VIC
02 6024 5450

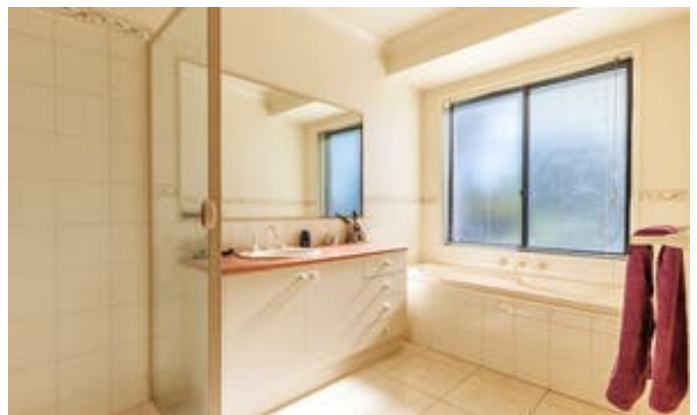
Dean Star
0407 685 580

- Double lock up garage with internal access plus a separate storage room
- Walk-in linen/storage cupboard
- Bore with an irrigation system throughout the block

If you are after a relaxed country lifestyle, only minutes to the centre of town and a short 20 minute drive into Albury, this is the one for you!.

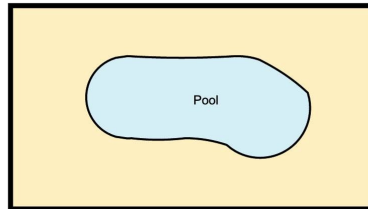
- Land Area 5,009.00 square metres
- Bedrooms: 4
- Bathrooms: 2
- Double garage







4580 RIVERINA HWY, HOWLONG.



Elders Real Estate

All measurements are approximate, this floor plan is for marketing purposes and is to be used as a guide only.
Floor plan prepared by Elevated Media for Elders Real Estate.