



23 Ferrier Drive, YARRAVEL, NSW 2440

Just Sold - Life is Sweet

We all love that feeling of space, whilst being happy in the knowledge that we are close enough to everything to keep life sweet and easy. Less than 10 minutes to the CBD you will find this 4.43ha bush block (almost 11 acres) the perfect place to kick back and relax around an outdoor fire with friends and family.

The comfortable three bedroom residence with a large living room is perfect for family, while the fenced yard will keep the kids and pets at bay. There's plenty of stuff outside to keep everyone busy, too. A triple garage with two roller doors and one fixed bay allows good storage for vehicles, leaving space for the workshop. Add to this an extra loo and wash tub and you'll see this turned into a "man cave" or "she shed" in no time. Lucky there's a couple of carports to keep that battle at bay.

We all need that little escape from suburbia to help us unwind. If you need some breathing space, call today and book a date with serenity.

The information contained in the advertising of this property is not based on any independent enquiries or knowledge of the agents, and the vendor and agents expressly disclaim any liability arising therefrom. The accuracy of the information cannot be guaranteed, and prospective purchasers should make their own enquiries

The particulars contained herein are supplied for information only and shall not be taken as a representation in any respect on the part of the vendor or its agent. Interested parties should contact the nominated person or office for full and current details.

TYPE: Sold

INTERNET ID: 22179274

SALE DETAILS

\$398,000

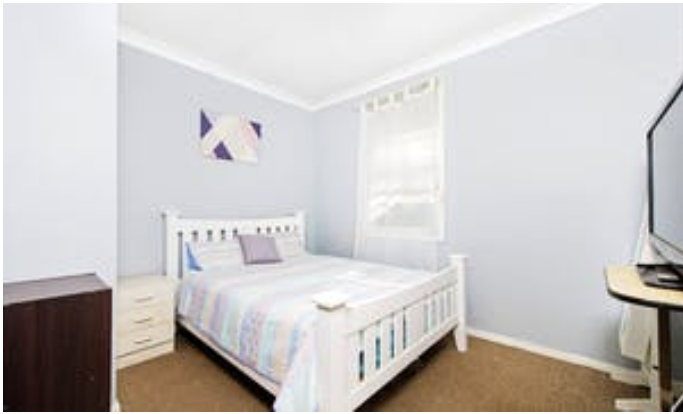
CONTACT DETAILS

Leah Elford
0428 295 952

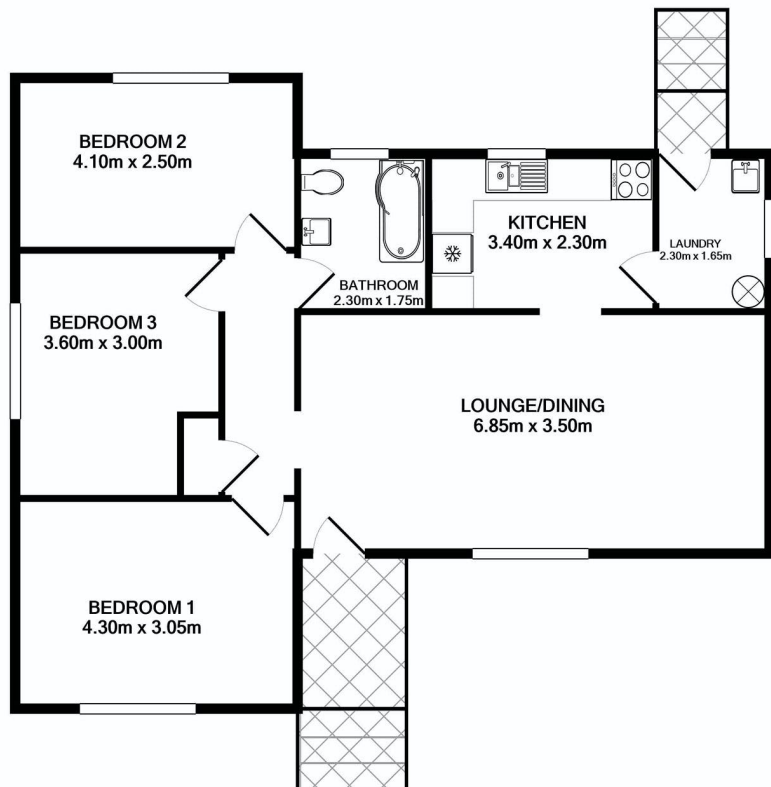
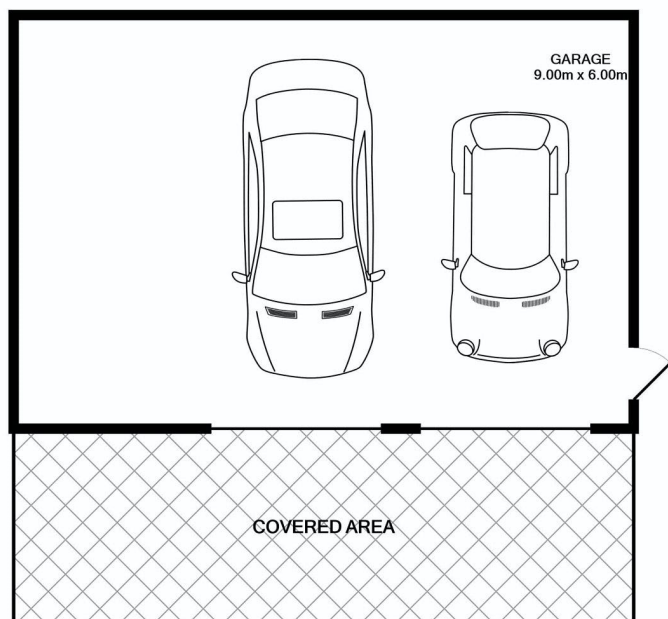
and form their own judgement as to these matters.

- Land Area 4.43 hectares
- Bedrooms: 3
- Bathrooms: 1
- Double garage
- Double carport
- Air Conditioning









23 Ferrier Drive Yarravel



TOTAL APPROX. FLOOR AREA 131.2 SQ. M. (1413 SQ. FT.)
Measurements are approximate. Not to Scale. For Illustrative purposes only.