

104/68 Eton Street, SUTHERLAND, NSW 2232

Ground Floor Townhouse-style Apartment

This striking modern townhouse style apartment makes intelligent use of glass to create a sense of light and space. Handily located, it only a short stroll to local schools, shops, eateries and Sutherland train station for an easy city commute.

- Two double bedrooms with built-ins, main with ensuite
- High ceilings and bright interiors create a sense of space
- Open plan living and dining area boasts floating floors
- Quality kitchen includes stone benches and gas cooktop
- Fully tiled main bathroom with separate bath and shower
- Offering a functional two storey townhouse configuration
- Sought after ground floor position provides easy access
- Sizable easy-care courtyard and undercover entertaining
- Air conditioning, video intercom, lift access to garage

The particulars contained herein are supplied for information only and shall not be taken as a representation in any respect on the part of the vendor or its agent. Interested parties should contact the nominated person or office for full and current details.

TYPE: For Sale

INTERNET ID: 22282972

SALE DETAILS

For Sale \$680,000

CONTACT DETAILS

Sylvania

3/202 Princes Highway
SYLVANIA, NSW
02 9522 6999

Troy Colman

0431 040 883

- Oversized lock-up garage and loads of visitor parking
- Desirable cul-de-sac location and pleasant leafy outlook
- Close proximity to Sutherland CBD and train station

Total Area: 136sqm

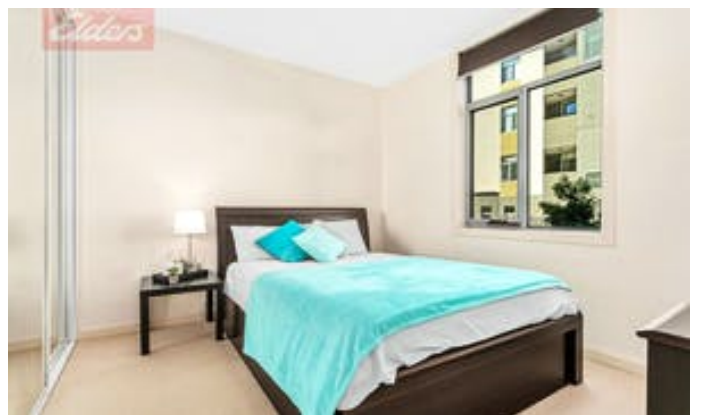
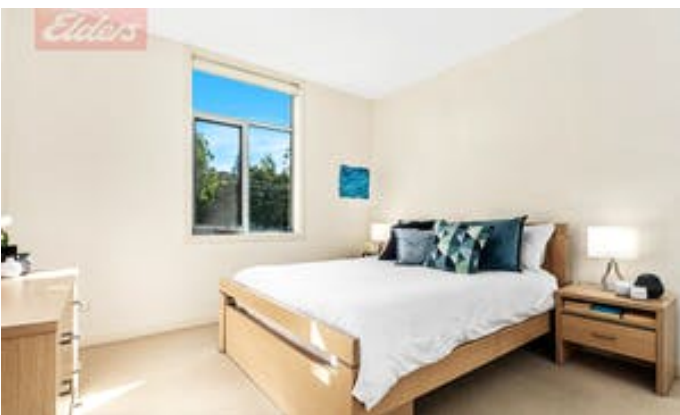
Strata Levies: \$2,056 p/q approx

Council Rates: \$362 p/q approx

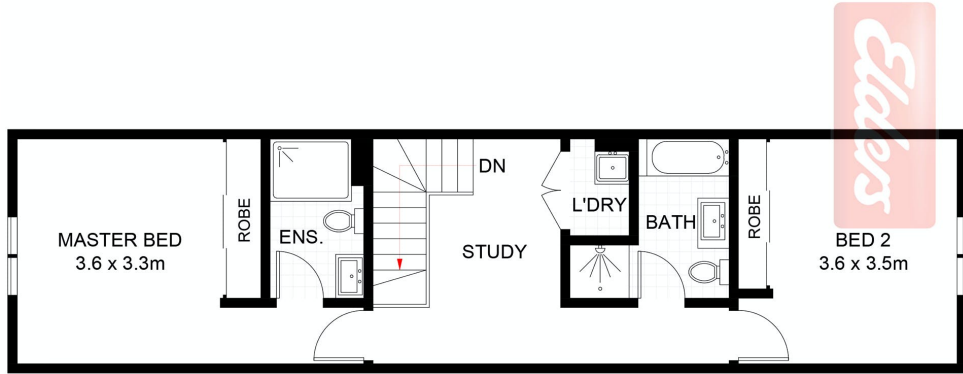
Water Rates: \$178 p/q approx

Other features: Built-In Wardrobes, Close to Schools, Close to Shops, Close to Transport, Garden

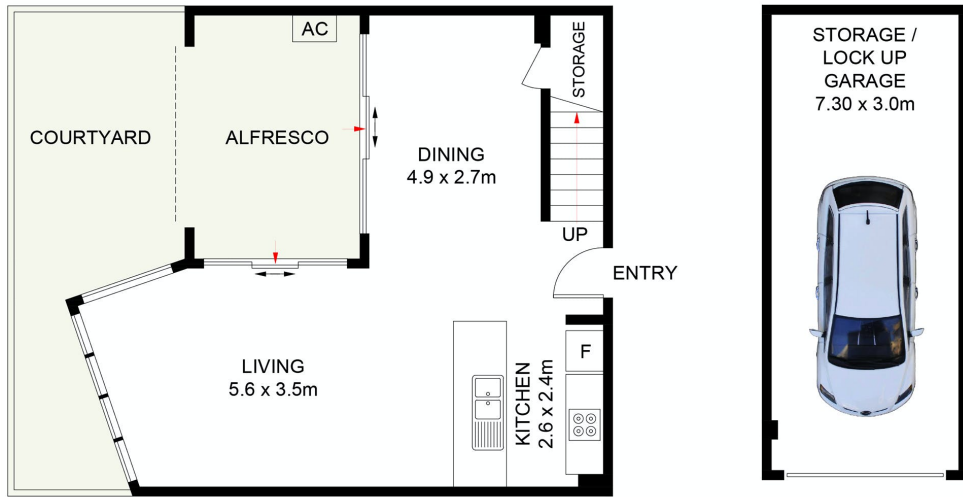
- Building Area: 136.00 square metres
- Bedrooms: 2
- Bathrooms: 2
- Single garage
- Air Conditioning







FIRST FLOOR



GROUND FLOOR



BASEMENT



104/68 Eton Street, Sutherland

Scale in metres. Indicative only. Dimensions are approximate. All information contained herein is gathered from sources we believe to be reliable. However, we cannot guarantee its accuracy and interested persons should rely on their own enquiries.