



## 38 Malunna Crescent, PARKLANDS, TAS 7320

### FANTASTIC LOCATION, LOVELY SEA VIEWS

Located in the very popular suburb of Parklands stands this solid 1956 built brick home that has lots of street appeal, an ideal northerly aspect, offers lovely sea views and across the street is the start of the walkway down to Oldaker Falls and Burnie Park.

Step inside to discover 3 bedrooms - 2 with built-ins, master with ensuite, neat bathroom, open plan living that includes quality Tas oak kitchen, dining and beautiful sun filled lounge featuring classic bay windows.

The gardens and lawns are very well maintained, the single garage with remote garage door is very convenient plus an adjoining storage shed is very handy.

Best offers on or before the 18th of September 2020.

#### Disclaimer:

While Elders Real Estate Burnie has taken every care to verify the accuracy of the

The particulars contained herein are supplied for information only and shall not be taken as a representation in any respect on the part of the vendor or its agent. Interested parties should contact the nominated person or office for full and current details.

**TYPE:** Sold

**INTERNET ID:** 22408313

#### SALE DETAILS

**Best Offers**

#### CONTACT DETAILS

**Elders Real Estate Burnie**

114 Wilson Street

Burnie, TAS

03 6432 2311

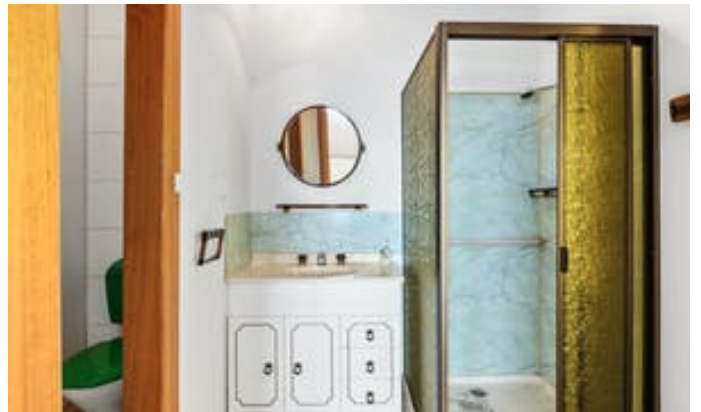
**Bruce Jubb**

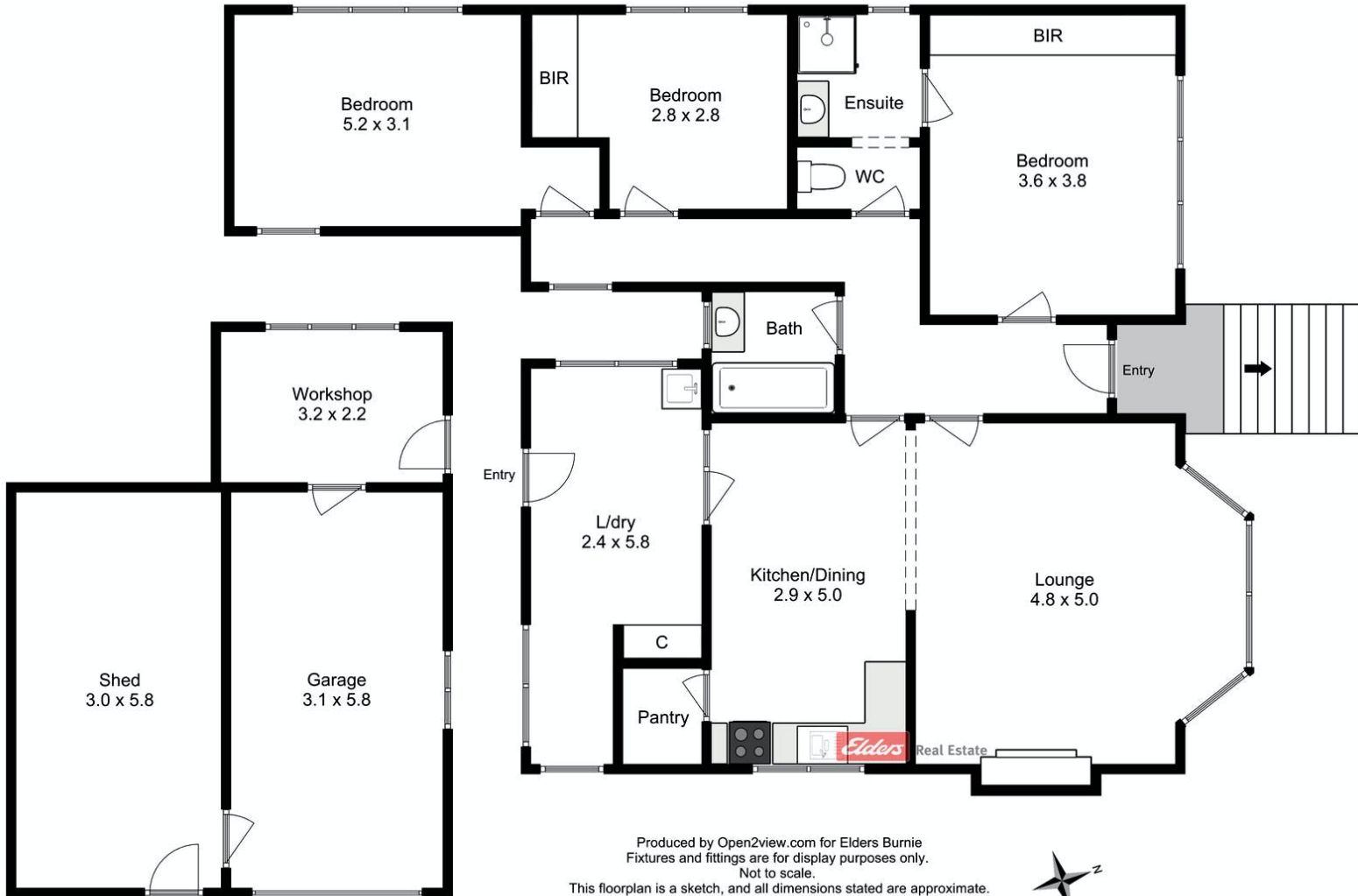
0417 987 828

details in this advertisement, we cannot guarantee its correctness. Prospective buyers or tenants need to take such action as is necessary, to satisfy themselves of any pertinent matters.

Other features: Built-In Wardrobes,Close to Schools,Close to Shops,Close to Transport,Fireplace(s)

- Land Area 479.00 square metres
- Bedrooms: 3
- Bathrooms: 2
- Single garage





Produced by Open2view.com for Elders Burnie  
Fixtures and fittings are for display purposes only.  
Not to scale.  
This floorplan is a sketch, and all dimensions stated are approximate.  
All room measurements are in metres.  
Approx floor area 115 sq m (excluding shed, garage and workshop)

