

6 TARONGA CRESCENT, BEGA, NSW 2550

GREAT LOCATION - FAMILY HOME

This extremely well presented home offers a unique floor plan that allows for the whole family to live in comfort. Located on the edge of town on a very quiet street; you will love the rural aspect at the back door - all within easy walk to the main street.

The property provides 2 separate living quarters; the first with 3 bedrooms, renovated bathroom, 2 living rooms, modern kitchen/dining room and an office. The second living area provides a bedroom, en-suite and distinct living space - this area could easily be set up as a fully self-contained granny flat. A large enclosed entertaining area joins the two living quarters seamlessly.

Families with teenage kids or older relatives will love the privacy afforded by the floor plan. The granny flat is also perfect for when guests come to visit.

Outside the established gardens are immaculate, with pockets designed as a private retreat in both the front and back yards.

The level back yard is its own private oasis - the gardens provide a natural screen from the neighbors. Two entertaining areas (1 undercover) complete the package of this

The particulars contained herein are supplied for information only and shall not be taken as a representation in any respect on the part of the vendor or its agent. Interested parties should contact the nominated person or office for full and current details.

TYPE: Sold

INTERNET ID: 22529567

SALE DETAILS

\$485,000

CONTACT DETAILS

Elders Real Estate Bega

Shop 3/248 Carp Street

Bega, NSW

02 6492 1799

Rod McDonald

0410 529 517

impressive home.

* 3 garden sheds

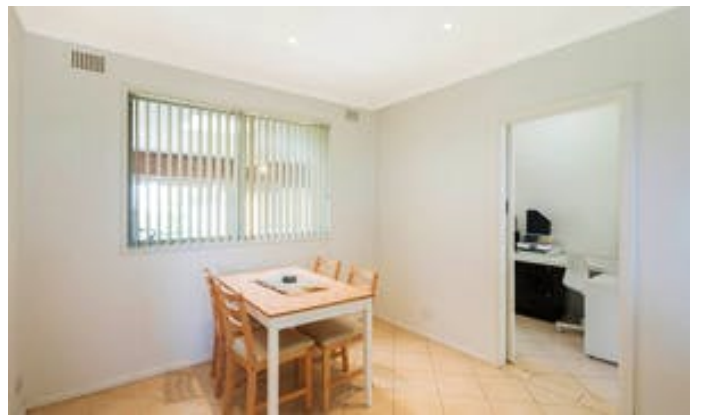
* Quiet street

* Close to hospital

* Easy walk to town

Other features: Built-In Wardrobes,Fireplace(s),Garden,Formal Lounge

- Land Area 879.00 square metres
- Building Area: 196.00 square metres
- Bedrooms: 4
- Bathrooms: 2
- Double garage
- Air Conditioning









6 Taronga Crescent Bega



Plan is not to scale.
Measurements are approximate
and should be used as a guide only.

