

## 489 Box Road, JANNALI, NSW 2226

### Perfect Family Home

This single level four bedroom family home enjoys bright interiors throughout and flat easy-care yards, an perfect space for your family to grow. Quietly located yet only a short walk to quality local schools, Jannali shops and train station.

- Four large bedrooms with built-ins, master offers ensuite
- A selection of four spacious and light-filled tiled living areas
- Modern kitchen with stainless appliances, stone benches
- Neat main bathroom features separate bath and shower
- Ducted air-conditioning and family friendly configuration
- Internal access to double garage and plenty of off-street
- Detached studio can be modified to in-law accommodation
- Massive covered entertaining deck flows effortlessly to yard
- Secure grassed yard is an ideal space for children to play

The particulars contained herein are supplied for information only and shall not be taken as a representation in any respect on the part of the vendor or its agent. Interested parties should contact the nominated person or office for full and current details.

**TYPE:** Sold

**INTERNET ID:** 22574687

#### SALE DETAILS

**For Sale \$1,275,000**

#### CONTACT DETAILS

**Sylvania**

3/202 Princes Highway  
SYLVANIA, NSW  
02 9522 6999

**Troy Colman**

0431 040 883

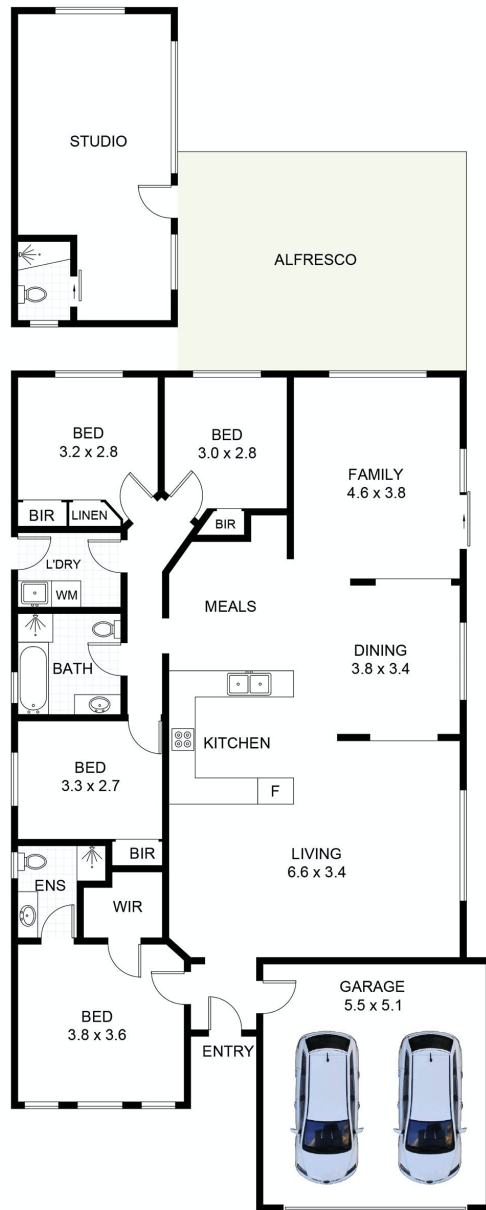
- Excellent location only moments to local schools and train

Land size: 557sqm

Other features: Built-In Wardrobes, Close to Schools, Close to Shops, Close to Transport, Garden

- Land Area 557.00 square metres
- Bedrooms: 4
- Bathrooms: 3
- Double garage
- Air Conditioning





### 489 Box Road, Jannali

Scale in metres. Indicative only. Dimensions are approximate. All information contained herein is gathered from sources we believe to be reliable. However, we cannot guarantee its accuracy and interested persons should rely on their own enquiries.