

190 ABECKETT ROAD, BUNYIP, VIC 3815

BALLINTRAE - CIRCA 1898 - 20 ACRES - AUCTION Saturday December 19th On-Site 11.00am

190 A'BECKETT ROAD, BUNYIP

This outstanding Historic 50 square Federation residence, situated within the township fringe of Bunyip- 1km to M1 freeway - 60 minutes to Melbourne CBD

Set on the Bunyip River with unencumbered views to the North, East & South, a magnificent property that encompasses history, beauty and a true sense of seclusion and serenity whilst living on the Urban Fringe in Melbourne's eastern growth corridor.

History and elegance surrounded by manicured gardens the features of the property showcase the uniqueness of this holding;

4 bedrooms plus sitting/library, 2 bathroom includes ensuite and W.I.R.

Large modern kitchen and meals overlooking the property with bay windows, a magnificent Caesar stone kitchen with 900mm stainless steel cooker, restored Rayburn combustion wood stove, original maid's kitchen adjoining suited to office or large butler's pantry, 5 open fireplaces, with outdoor decked area with outdoor fire place suited to long lunch's & evenings meandering in the long views with friends and loved

The particulars contained herein are supplied for information only and shall not be taken as a representation in any respect on the part of the vendor or its agent. Interested parties should contact the nominated person or office for full and current details.

TYPE: Sold

INTERNET ID: 22580070

AUCTION DETAILS

11:00am, Saturday
December 19th, 2020.
On-site

CONTACT DETAILS

Jackie Shearer
0437 966 769

ones.

Polished Baltic pine floors throughout, Victorian gutter cornicing, rosettes, ornate lighting, 12ft high ceilings, wide hallways, lead light bay windows. A grand entrance and French doors from most rooms to the full wrapped classic wide skirted veranda's that offer views from each room of the home framing the pastures leading to the river. Ducted heating & refrigerated cooling, 28 panel solar system, instantaneous gas hot water. Large roof cavity and under house storage.

2nd accommodation 2 bedroom, en-suite bathroom facility with additional outside toilet/powder room

Property Features;

Shedding with removable door/wall for full access, tack, storage rooms & office.

3 phase power with full 28 panel solar system into grid, mains town water with pumping rights to Bunyip River, Natural gas main supply

120-year-old heritage listed gardens with Edna Walling influence, plantings of old-fashioned roses and cottage plants which enhance the ancient gardens which boast oaks, elms, copper beach, lilypilly, smoke bush, box and lilac, camellias, rhododendrons and includes, fruit trees of many different varieties.

15 paddocks (largest approx. 5 acres), 6 with horse shelters, state of the art equine fenced electric fencing throughout, water troughs & laneway access plus 3 post & rail yards, a round yard plus cattle stock yards, loading ramp & crush

Large shed with concrete floor, 3 phase power & feed /tack room

Hay shed with concrete floor

River frontage with pumping rights (mains back up) & gravity fed troughs

Chicken run with shed, collecting boxes fully large fenced run

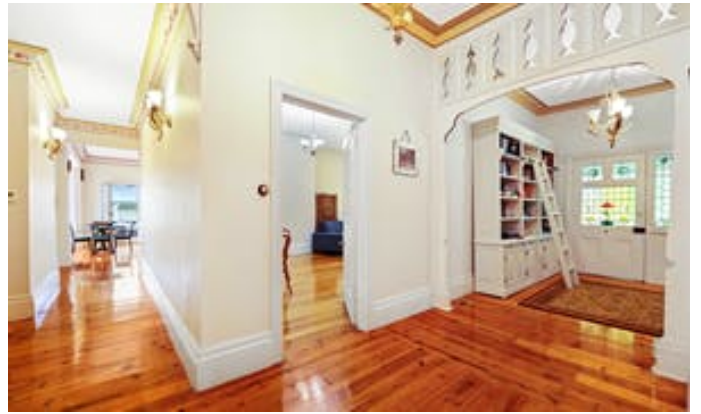
" Ballintrae " was commissioned by Major Arthur Haywood A'Beckett in 1898, from a wealthy family he arrived from England Major A'Beckett a captain in the Antrim Artillery, coming to Australia before the war he enlisted in the Australian Imperial Force, was at the landing of Gallipoli, leaving for war a lieutenant returning a Major in 1919. Ballintrae was a popular retreat for the wealthy Melbourne set and the scene of many garden parties, church fete's and social events reflecting Arthurs social position and interest in Public affairs.

CONTEXTUAL HISTORY OF THE BUNYIP DISTRICT Establishment in the nineteenth century Bunyip is closely associated with the opening of the Gippsland railway in 1877. Prior to that, a township with the name of Buneep had been surveyed in 1857 and was located on the banks of the Bunyip River to the north east. The township on the railway (known initially as "New Bunyip") at first grew slowly, with the railway station also doubling as the post office. By 1887 there were two hotels and a general store. Although timber getting was the main industry, as was the case throughout the area, the town and environs' tourism potential was also being explored, with fishing trips advertised. The area had its attractions for the wealthier classes, many of whose families, including the A 'Becketts, built substantial houses and gardens as retreats from the city. Major Arthur A'Beckett, a grandson of Victoria's Chief Justice owned parcels of land throughout the township. These included a purchase of 200 acres in 1895 on what became A'Beckett Road, where he built a house, Ballantrae (number 190), in 1898, which still stands.

Other features: Built-In Wardrobes, Close to Schools, Close to Shops, Close to Transport, Fireplace(s)

- Land Area 20 acres
- Building Area: 300.00 square metres
- Bedrooms: 5
- Bathrooms: 3
- 6 car garage
- Air Conditioning











THE FLOOR PLAN IS NOT TO SCALE. MEASUREMENTS ARE INDICATIVE AND IN METERS. EXTERIOR ELEMENTS ARE NOT IN POSITION. PLANS SHOULD NOT BE RELIED ON. INTERESTED PARTIES SHOULD MAKE AND RELY ON THEIR OWN ENQUIRIES.

Under Roof Area 312m² (33.5SQ)

