



73/289-295 Sussex Street, SYDNEY, NSW 2000

Super sized Studio with lock up garage - perfect for a city pad or an investment

This supersize studio apartment is ideally positioned on the Darling Harbour's doorstep.

Located in the heart of the city, this apartment is at the entrance to one of the world's finest waterfronts and is within 5 minutes walking distance to Town Hall station, George Street, and the Queen Victoria Building.

This full brick apartment is the perfect city pad or ideal investment in an area with proven strong demand. Enjoy the city life with all the modern conveniences and the best Sydney has to offer right outside your doorstep.

Strata plan size: Total 68 square meters (apartment 52 square meters plus lock up garage 14 square meters)

This north-facing property has an expansive and spacious open plan living area, leading out to a sunny terrace balcony

- Located on level 11, set in a peaceful and tranquil environment

TYPE: Sold

INTERNET ID: 22712848

SALE DETAILS

SOLD FOR \$670,000

CONTACT DETAILS

Sydney City

Ground Floor, 299 Sussex Street
SYDNEY, NSW
(02)9056 0808 / (02)8068 5900

Evon Shi

0404 808 310

- Brand new polished hard flooring installed throughout
- Brand new kitchen featuring a beautiful stone benchtop, gas cooking, fridge and modern appliances
- Fully-fitted modern bathroom and separate shower
- Air conditioning, internal laundry, built-in wardrobe
- Pet friendly building, 24 hour security concierge

This apartment comes with TV, Fridge and Washer Dryer Combo

Resort-style facilities include: heated lap pool, sauna, spa, gym and games room.

Outgoings:

Strata: \$959 per quarter (if paid before due date)

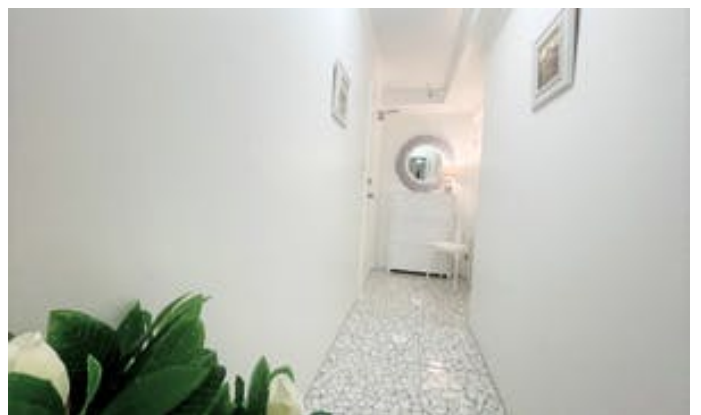
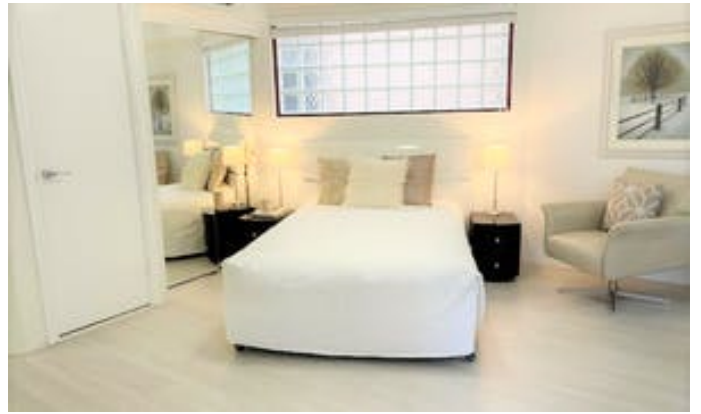
Council: \$296 per quarter

Water: \$153 per quarter

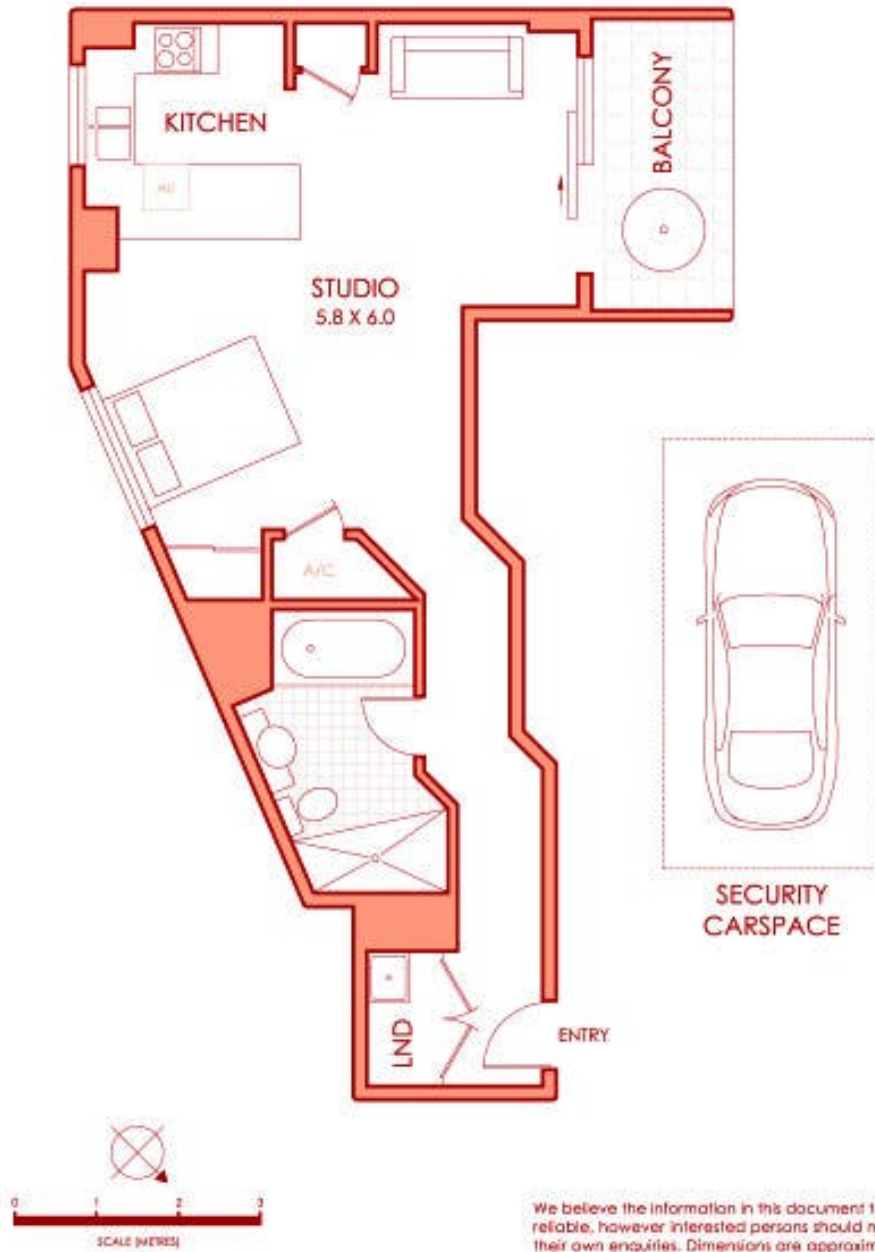
Please contact Evon Shi at 0404 808 310 or email evon.shi@eldersrealestate.com.au or Jim Triantos at 0424 808 189 or email jim.triantos@eldersrealestate.com.au for further information.

Other features: Built-In Wardrobes

- Bedrooms: 1
- Bathrooms: 1
- Single garage
- Air Conditioning







We believe the information in this document to be reliable, however interested persons should make their own enquiries. Dimensions are approximate.