

21 Kate Street, HARLAXTON, QLD 4350

Price Reduced - Downlands View

Downlands View is set in a slightly elevated position overlooking the beautiful sporting grounds of the prestigious Downlands College.

This quality home features:

- 3 spacious bedrooms all with built ins
- 4th smaller bedroom or office
- Front undercover verandah at entry
- Formal lounge with large windows
- Kitchen and dining with dishwasher & reverse cycle air conditioning
- Newly polished timber flooring throughout
- Undercover pergola
- Internal laundry

TYPE: Sold

INTERNET ID: 22792135

SALE DETAILS

\$455,000 Negotiable

CONTACT DETAILS

**Elders Real Estate
Toowoomba**
202 Hume Street
Toowoomba, QLD
07 4633 6500

Sue Edwards
0437 377 988

- Drive thru lock up garage with carport and access to the fully fenced back yard
- Massive 12m x 7.5 Colorbond shed and workshop at rear
- Generous 1012m2 allotment with some beautiful large established trees
- New hot water System
- Rates net half yearly - \$1308.52
- Water rates net half yearly - \$304.59 + consumption

This perfect family home with great street appeal is set in a leafy neighbourhood and is conveniently located within a few minutes to Northpoint Shopping Centre, Aldi Shopping Complex and approx. only 5 minutes to the Toowoomba CBD.

Kate Street is a very desirable location and is highly sought after by families of the college.

Astute investors - this quality home has recently had a makeover and has huge potential to be a very successful Air BNB or investment property.

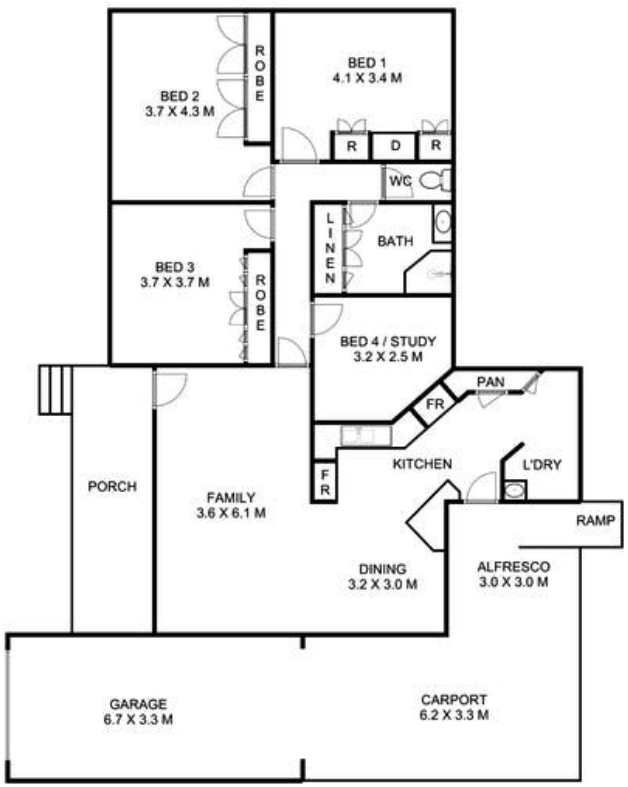
Please contact Sue Edwards at Elders today on 0437 377 988 to arrange your private viewing.

Other features: Built-In Wardrobes, Close to Schools, Close to Shops, Close to Transport, Garden

- Land Area 1,012.00 square metre
- Bedrooms: 4
- Bathrooms: 1
- 3 car garage
- Air Conditioning







Elders 21 Kate Street, Harlaxton

This plan is for representational purposes only. All dimensions displayed are approximate and shouldn't be solely relied upon. Floorplan by Statik Illusions. Internal 141m² External 126m² Total 267m²

