



1751 Jervois Road, WOODS POINT, SA 5253

Modern 4 Bedroom Executive 4 Bedroom Home on acreage with Rural Views

2.36 hectares, 5.83 acres

Proudly sited in an commanding elevated position sits this modern executive family home on 5.6 acres, soaking in the picturesque views overlooking river flats to the beautiful Murray River.

This stylish home offers a great mixture of formal and informal living areas, comprising a large separate rumpus/family/games room, separate lounge, open plan living with kitchen, dining and family areas equipped with quality appliances, 2 ovens, ample bench and cupboard space and breakfast bar, overlooking the spacious dining and family areas.

The master bedroom has an ensuite and walk-in robe taking advantage of the amazing views, as do the lounge and family room. The remaining 3 Bedrooms offers spacious accommodation with all having built in robes.

The home is climate controlled with a ducted reverse cycle air conditioner and boasts a large 8kw solar system.

TYPE: Sold

INTERNET ID: 22822469

SALE DETAILS

\$455,000

CONTACT DETAILS

Murray Bridge

93 Railway Terrace

TAILEM BEND, SA

08 8572 8006

RLA: 62833

Gavin Clarke

0417 859 733

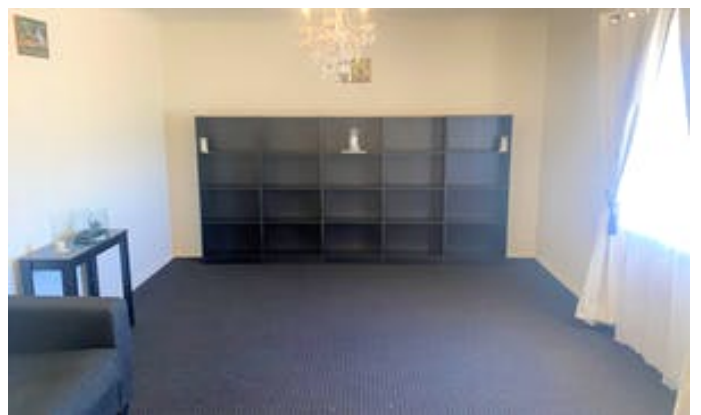
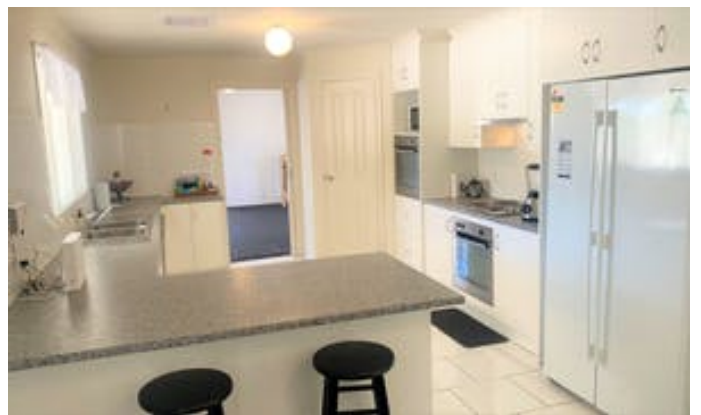
A spacious Verandah with concrete floor traverses the length of the home and provides a perfect all weather area for Outdoor entertaining.

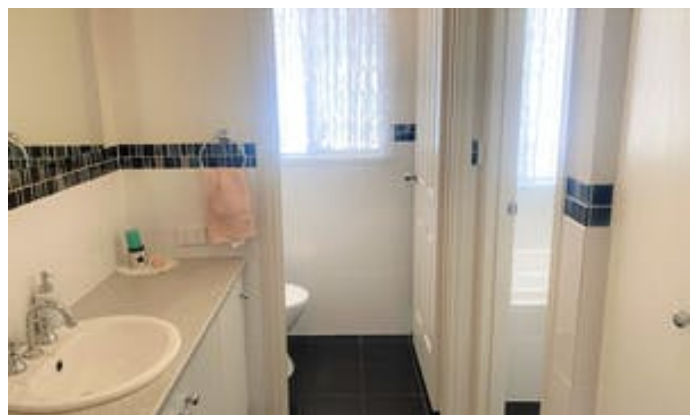
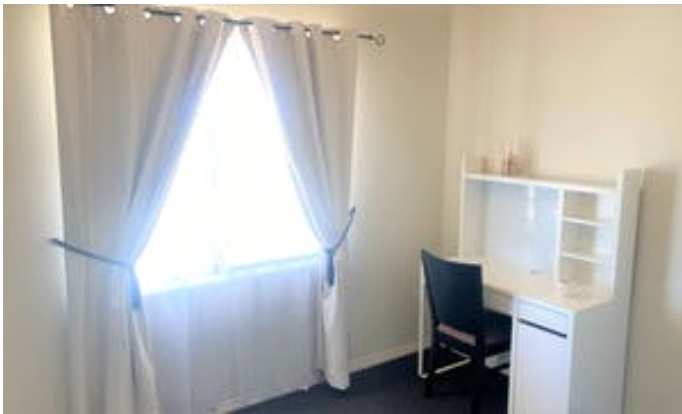
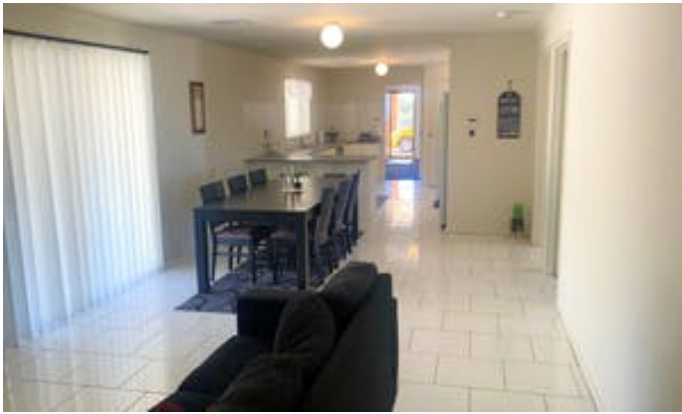
A double carport with plenty of extra Parking available, a garden shed with 3 Phase Power ready to go and 10,000 litres of rain water storage. Having ample space for Children to play and ride motorbikes.

- Land Area 2.359 hectares
- Bedrooms: 4
- Bathrooms: 2

HOMESTEAD

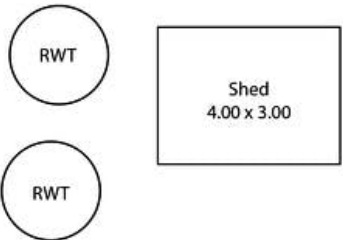
Bedrooms	4
Bathrooms	2











Living:	213.28 sqm (2295.7 sq ft)
Verandah:	91.46 sqm (984.5 sq ft)
Shed:	12.00 sqm (129.2 sq ft)
Carport:	33.06 sqm (355.8 sq ft)
Total:	349.80 sqm (3765.2 sq ft)

This Drawing is for illustration purposes only. All measurements are approximate and details intended to be relied upon should be independently verified.

