



34 WYALLA ROAD, JAMBEROO, NSW 2533

Get Started in Jamberoo

34 Wyalla Road is the perfect opportunity to enter the property market in Jamberoo.

Great investment, currently tenanted, or a home to begin life in the country, a first home buyer or a down sizing couple or retirees. Multiple reasons to live within walking distance of Jamberoo village with clubs, historic Jamberoo Pub, Golf Club, Bowling Club, sporting fields, primary school, IGA, Cafes and only a 10 minute drive to Kiama and the south coasts pristine beaches.

This 2 bed, 1 bathroom home has large living room with rural views to the mountains, 2 large bedrooms, dining area and full kitchen with laundry and extra toilet.

Currently the home only occupies 50% of the 820sqm block so if you are a gardener there is a blank canvas for you to work on or maybe you can build a tinkering shed or garage.

Please note: This property currently has excellent tenants therefore ALL inspections will be carried out by appointment to minimize disruption to the tenants.

Other features: Close to Schools, Close to Shops, Garden, Open rural outlook, corner block with dual access

TYPE: Sold

INTERNET ID: 22847358

SALE DETAILS

\$795,000

CONTACT DETAILS

Elders Jamberoo

20 Allowrie Street
Jamberoo, NSW
02 4236 0891

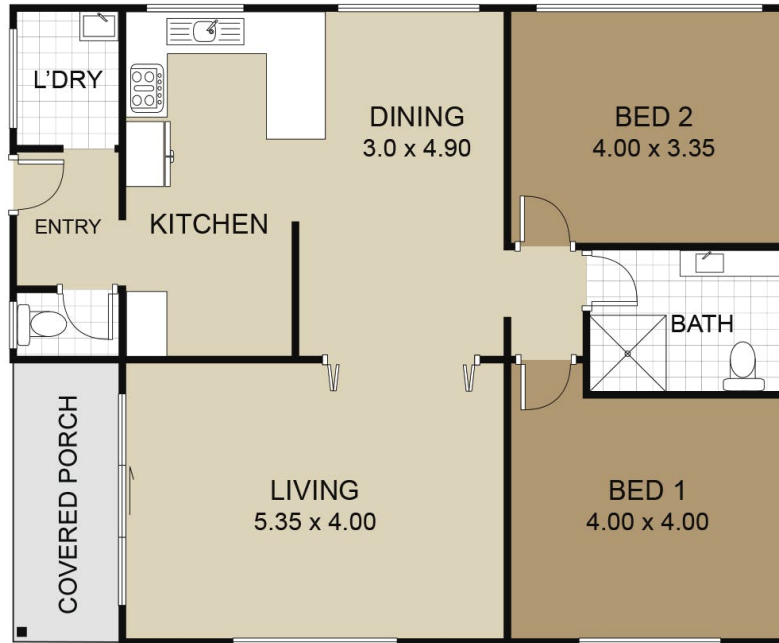
Vivienne Marris

0402 101 343

- Land Area 820.00 square metres
- Bedrooms: 2
- Bathrooms: 1
- Car Parks: 2







34 Wyalla Road, Jamberoo

eldersjamberoo.com.au



DISCLAIMER: This floor plan is an illustration only. All interested parties should not rely on this floor plan as showing the final design, appearance, content or construction of the building. Measurements and scale are approximate. All interested parties must make and rely on their own enquiries to determine the accuracy of the content shown.