



6/41 Bath Road, KIRRAWEE, NSW 2232

Holiday at Home - Pet Friendly

This double brick townhouse provides generous light-filled interiors plus access to resort-style facilities including indoor pool, sauna, gym and tennis court. Conveniently located within easy walking distance to quality local schools, South Village shopping and Kirrawee train station.

- Three expansive double bedrooms with built-in robes
- Spacious master bedroom offers generous en-suite
- Separate and functional light-filled living and dining areas
- Caesar stone kitchen equipped with stainless appliances
- Modern full bathroom and guest powder room downstairs
- Superb courtyard and covered area an entertainer's delight
- Single lock-up garage and additional storage facilities
- Solid full brick and slab construction stands the test of time

TYPE: Sold

INTERNET ID: 22849141

SALE DETAILS

For Sale ~~\$780,000~~ -
\$820,000

CONTACT DETAILS

Sylvania
3/202 Princes Highway
SYLVANIA, NSW
02 9522 6999

Michelle Michell
0407 212 755

- Resort-style facilities including indoor pool and tennis court
- Pet friendly complex with manicured common grounds
- An excellent investment opportunity within a growth area
- Minutes to South Village shops and Kirrawee train station

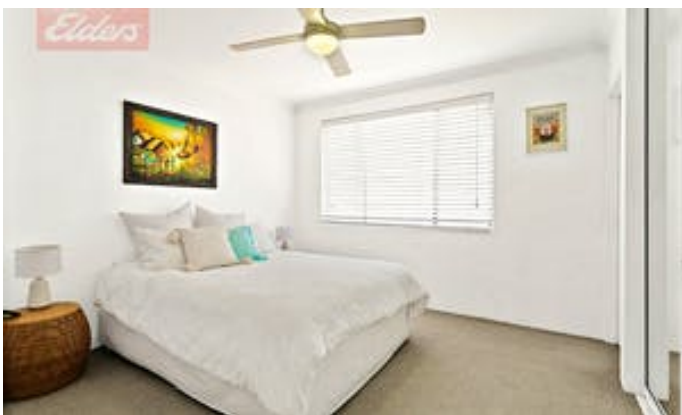
Strata levies: \$840 p/q approx

Council rates: \$259 p/q approx

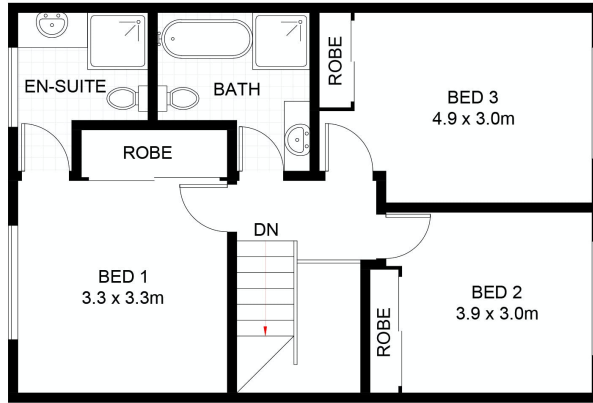
Water rates: \$140 p/q approx

Other features: Built-In Wardrobes, Close to Schools, Close to Shops, Close to Transport, Garden

- Bedrooms: 3
- Bathrooms: 2
- Single garage
- Swimming Pool
- Air Conditioning







FIRST FLOOR



(NOT SHOWN IN ACTUAL LOCATION / ORIENTATION)



GROUND FLOOR



6/41 Bath Road, Kirrawee

Scale in metres. Indicative only. Dimensions are approximate. All information contained herein is gathered from sources we believe to be reliable. However, we cannot guarantee its accuracy and interested persons should rely on their own enquiries. Some images may contain digital furniture.