



7 Wornt Road, DALYELLUP, WA 6230

Complete Package in Dalyellup at an Affordable Price

Forget about building when this home has everything a family could want and more. Ideally located and a short drive to Dalyellup Primary School and beautiful parks, walk trails and beach, sits this four bedroom, two bathroom quality built home built by Summit Homes on a generous 766m² block with side access.

This well thought out floor plan has been designed for the modern family. The master bedroom has a walk in robe and ensuite and access to the formal lounge at the front of the home. The additional 3 bedrooms are also a good size with 2 of the bedrooms having built in robes.

The open plan living area is functional and over looks the large alfresco area with gable roof and underground pool. A low maintenance garden is perfect for the busy family and is fully reticulated, a 5m² x 7m² approx powered workshop is ideal for storing a boat with a high gable ceiling and roller door for easy access, side access for a boat or camper trailer is also a bonus.

Property features include:

Double automatic garage with shoppers door

The particulars contained herein are supplied for information only and shall not be taken as a representation in any respect on the part of the vendor or its agent. Interested parties should contact the nominated person or office for full and current details.

TYPE: Sold

INTERNET ID: 22859694

SALE DETAILS

From \$449,000

CONTACT DETAILS

SDEA Bunbury
13 Stirling Street
Bunbury, WA
08 9721 3533

Karen King
0424 139 624

Low maintenance reticulated lawns and gardens and side access

Spacious open plan living and dining. Separate lounge/theatre room

Large and extremely functional kitchen with stainless steel oven, dishwasher and plenty of bench and cupboard space

4 Bedrooms, 3 with robes and 2 Bathrooms

Outdoor alfresco with gable room

Security cameras and Front window shutters

Evaporate Air Conditioning and also Ducted Gas heating (Braemer)

Cement Underground Pool with Sand filter

Powered workshop with easy access

With so many extra features to mention you really need to inspect this home. Contact the agent everyone's talking about Karen King on 0424 139 624 or visit one of our Home Opens advertised.

Land Size: 766sq*

Water Rates: \$996.60 approx. P/YR

Land Rates: \$2230.00 approx. P/YR

Built: 2001 by Summit Homes

*Approximate Only

Other features: Built-In Wardrobes, Close to Schools, Close to Shops, Close to Transport, Garden, Powered Workshop 5x8

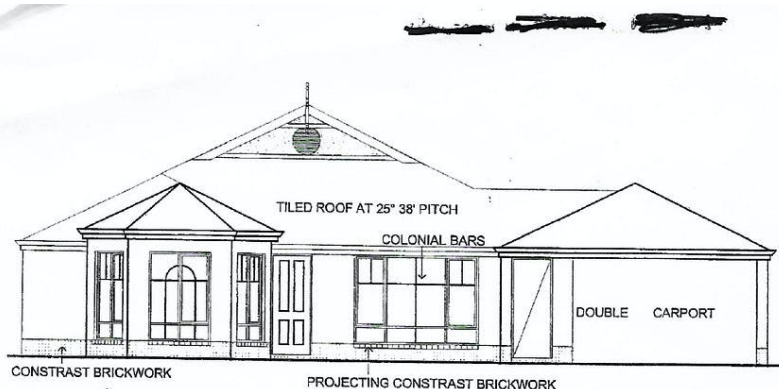
- Land Area 766.00 square metres
- Building Area: 160.00 square metres
- Bedrooms: 4
- Bathrooms: 2
- Double garage
- Swimming Pool
- Air Conditioning



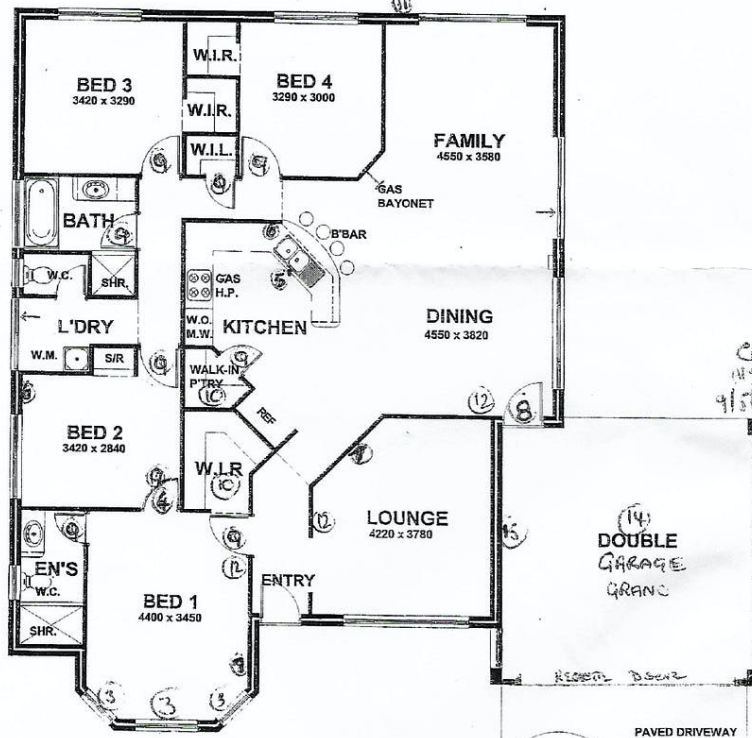








ELEVATION



Consultant:

CABERNET

Dimensions
 Width including D/Carport = 16.08m
 Width excluding D/Carport = 11.87m
 Depth = 15.47m

