



208 Kin Kin Road, CANINA, QLD 4570

A Slice of Heaven

Located in the highly sought-after area of Canina, you know as soon as you pass through the electric gates you are about to experience something special. As you proceed up the tree lined driveway the striking family home emerges into view and the magic begins.

Perfectly poised to take advantage of breathtaking 360-degree views of prime farmland out to the mountains beyond, this immaculately presented property offers an exceptional country lifestyle.

The home has been designed with entertaining in mind, the expansive front portico or rear patio are ideal for alfresco dining, both areas flow seamlessly inside to the open plan living, dining and well-appointed Chef's gourmet kitchen. The large windows throughout the home provide a bright and open feeling, each room with a view. Three bedrooms, all very generous in size have access to the front portico, the master creating its own sense of private space and the ensuite is truly a piece of art. The fourth bedroom has been set up, and used, as an office, spacious laundry, plenty of storage room and double garage with automatic doors complete the picture.

The gently undulating property is fully fenced and divided into 8 paddocks all with

The particulars contained herein are supplied for information only and shall not be taken as a representation in any respect on the part of the vendor or its agent. Interested parties should contact the nominated person or office for full and current details.

TYPE: Under Contract

INTERNET ID: 22P0937

SALE DETAILS

Contact Agent

CONTACT DETAILS

Elders Real Estate Gympie

153 Mary Street

Gympie, QLD

07 5482 6444

Karen Corbett

0427816156

access to water via troughs or 1 of the 2 dams. For those with horses an equestrian arena, stables and day yards are all set up.

Other infrastructure includes:

- 10m x 8m shed with a 10m x 4m annex,
- 3 phase power (at both shed and house)
- 3 road frontage
- 20,000 gallon underground water tank
- 10.5 kw solar system

The Gympie region has emerged as a gateway, less than an hour to Noosa or Maroochydore; an hour and a half to Hervey Bay, and only 2 hours to Brisbane.

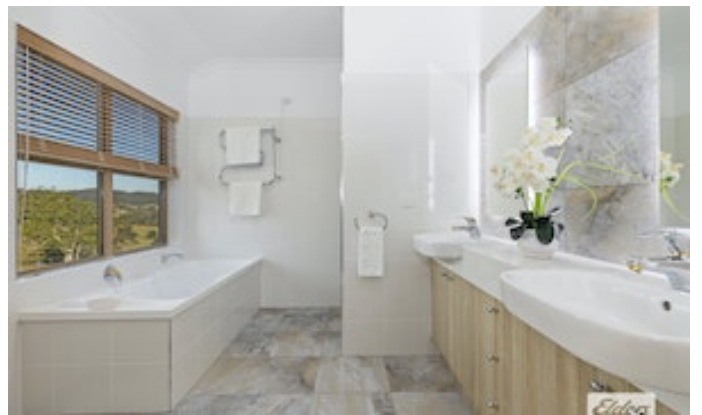
Properties of this calibre don't come along every day. The vendor is committed to selling and may consider offers prior to auction. Ensure you don't miss your opportunity to secure this stunning property, call today to arrange your private inspection.

This property is being sold by auction or without a price therefore a price guide cannot be provided. The website may have filtered the property into a price bracket for website functionality purposes.

Other features: 3 Phase Power, Area Views, Prestige Homes

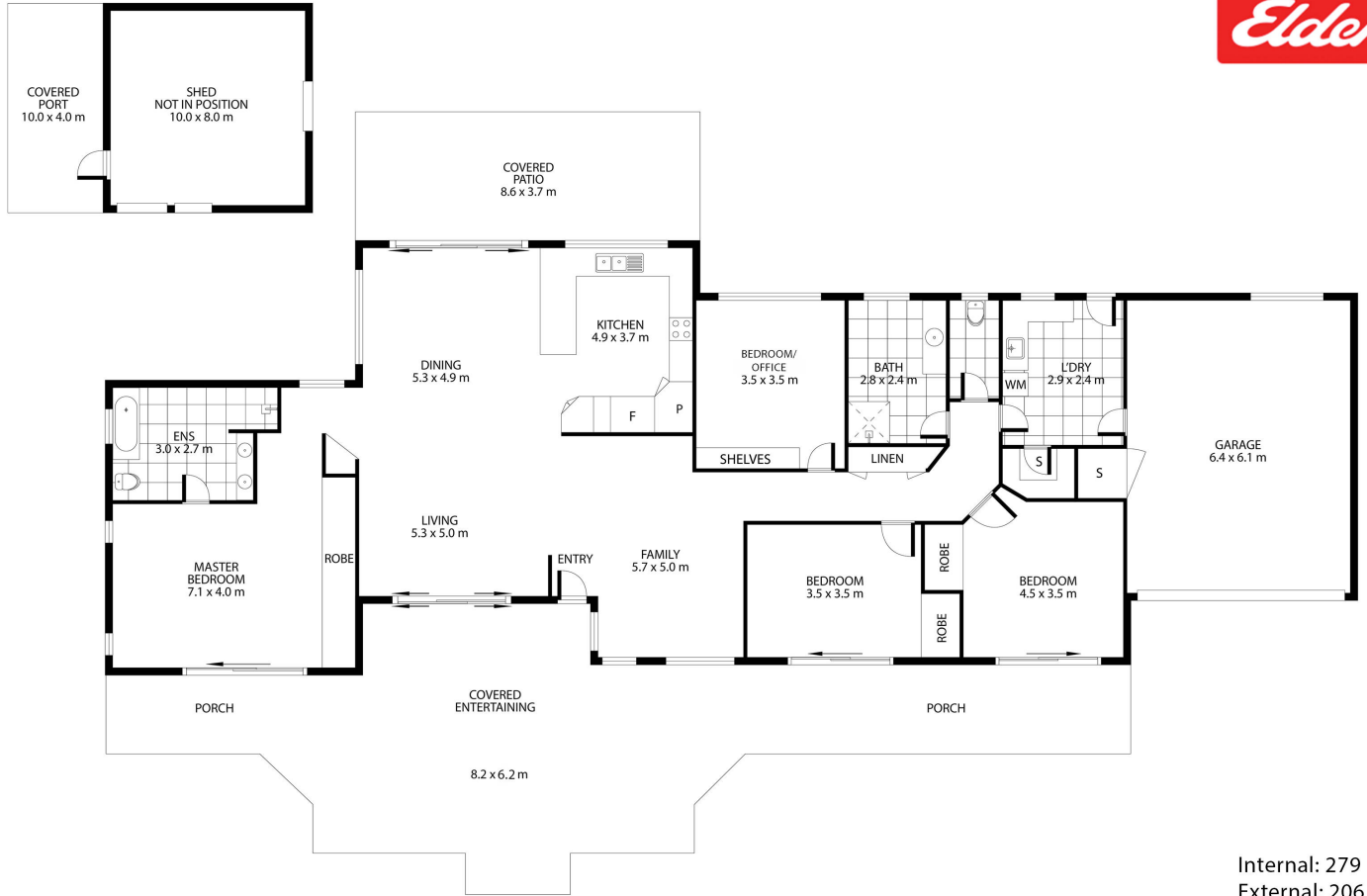
- Land Area 15.35 hectares
- Bedrooms: 4
- Bathrooms: 2
- Double garage
- Ensuite











 208 Kin Kin Road, Canina

Internal: 279 m2
 External: 206 m2
 Total: 485 m2
 Land: 154,145 m2

Artist Impression ONLY. Every attempt to has been made too ensure the accuracy of this floor plan. All measurements are approximate and we take no responsibility for any error or mis-statement. This plan should only be used for real estate purposes for a prospective buyer. FLOOR PLAN BY ELITE FILM AND PHOTO | elitefilmphoto.com.au

