

15 Sunray Road, MOTHAR MOUNTAIN, QLD 4570

OWNER SITUATION HAS CHANGED - NEEDS TO BE SOLD!

Tucked privately off the road, this charming 1920s Queenslander is bursting with potential and ready for someone to bring it back to life. With all the hallmarks of classic Qlder charm-VJ walls, polished hardwood floors, high ceilings, and a cozy fireplace-this home also boasts a rare surprise: two separate living areas.

Set on a beautiful 5-acre parcel, the block is fully fenced with a lovely blend of cleared land and shady native trees. There's even a dam, two water tanks, a garden shed, and a rustic chook shed waiting for new life. And the added bonus of the school bus that comes to the end of the road for both Monkland State School and Gympie High School.

A solid 3-bay shed provides space for two vehicles plus extra room for storage or a workshop.

Located 9 minutes to Gympie Centro, 5 mins to Monkland State School, 5 mins to Bunnings, 51mins to Sunshine Coast airport, 53 mins to Noosa Main Beach and 1.5hrs to Brisbane Airport.

At a glance -

The particulars contained herein are supplied for information only and shall not be taken as a representation in any respect on the part of the vendor or its agent. Interested parties should contact the nominated person or office for full and current details.

TYPE: Auction

INTERNET ID: 22P1595

AUCTION DETAILS

10:00am, Saturday July 26th, 2025

CONTACT DETAILS

Elders Real Estate Gympie

153 Mary Street
Gympie, QLD
07 5482 6444

Helene Haack
0417 184 884

- * 5 Acres
- * 3 Bedroom/1 Bathroom/2 Living
- * 3 Bay shed
- * 2 Water tanks
- * Dam
- * Fully fenced

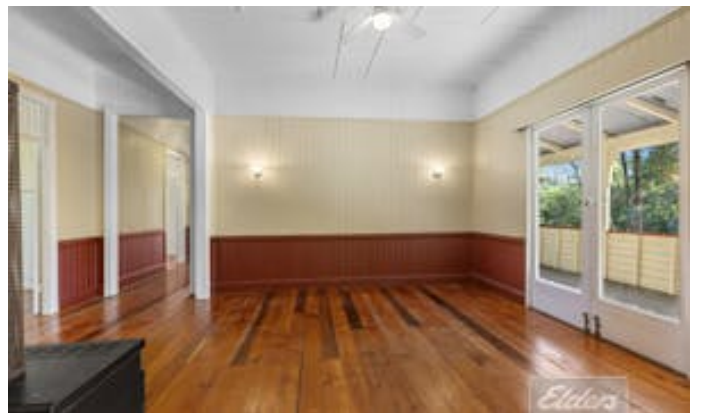
This property is ideal for buyers chasing a lifestyle change, a bit of space and fresh air, and the chance to add value through renovation. Whether you're a family looking for a future project or a buyer with vision-this could be your perfect acreage escape.

TO BE AUCTIONED SATURDAY 26 JULY @10AM

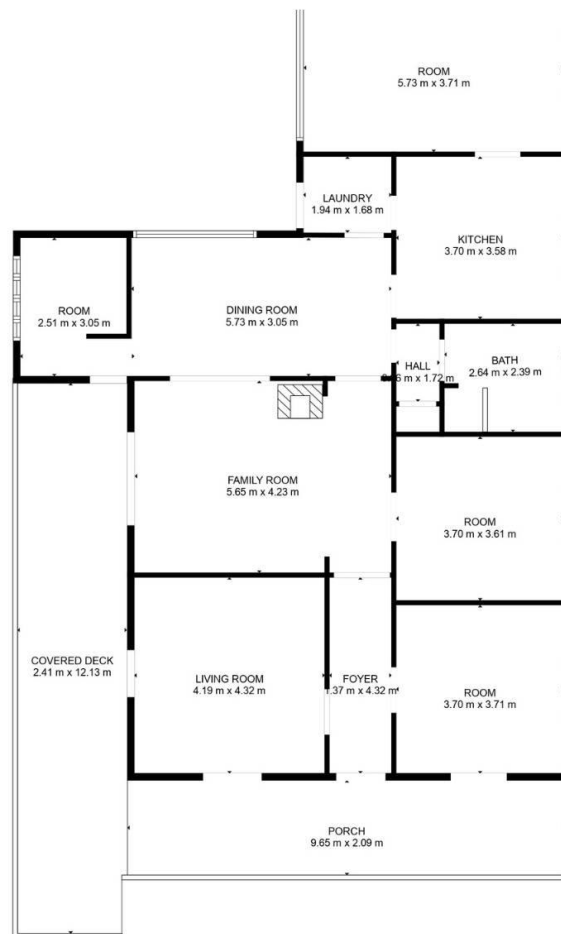
Call Helene Haack 0417 184 884 or Casey Hart 0434 163 113 for more information or to arrange a private inspection.

Other features: Close to Schools, Close to Shops, Close to Transport, Heating, Roller Door Access

- Land Area 2.1 hectares
- Bedrooms: 3
- Bathrooms: 1
- Double garage
- Floorboards







TOTAL: 151 m2
FLOOR 1: 151 m2