



## 73 Golden Hind Avenue, COOLOOLA COVE, QLD 4580

### GOLDEN OPPORTUNITY

Welcome home to this golden opportunity on Golden Hind Avenue, offering comfort, functionality, and easy care living.

Inside, the home features high ceilings and a light filled open plan living area, complete with air conditioning and ceiling fans. The kitchen is complete with electric appliances and plenty of timber bench top space, creating a practical and inviting space.

The spacious master bedroom includes his and hers wardrobes along with a private ensuite, while bedrooms two and three are generously sized, each with standalone wardrobes and ceiling fans.

Step outside and enjoy both front and rear verandahs, perfect for capturing the morning and afternoon sun. The property also includes an attached two car carport, water tank, council-approved storage container, and a fully fenced yard backing onto a peaceful reserve adds privacy and security.

The property also offers convenient access to a large shade shed ideal for a caravan or boat, along with substantial lockable garden sheds for additional storage.

The particulars contained herein are supplied for information only and shall not be taken as a representation in any respect on the part of the vendor or its agent. Interested parties should contact the nominated person or office for full and current details.

**TYPE:** For Sale

**INTERNET ID:** 22P1680

**SALE DETAILS**

**\$769,000**

**CONTACT DETAILS**

**Elders Real Estate Gympie**

153 Mary Street

Gympie, QLD

07 5482 6444

**Shellie Bennett**

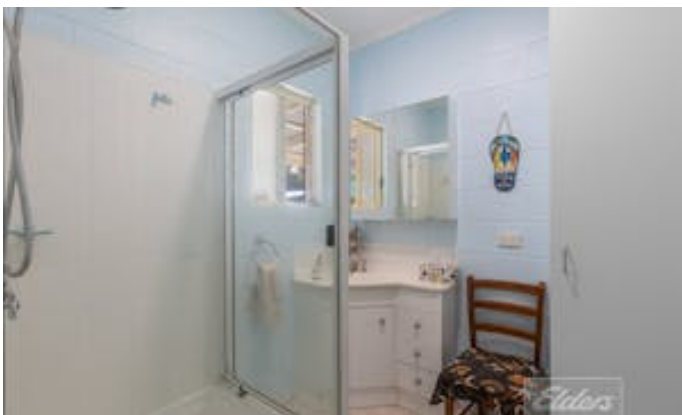
#0414 632 960#

This is an excellent opportunity for those seeking a quality, low maintenance home in a quiet and well positioned setting.

Book your private inspection today! Contact Shellie Bennett on 0414 632 960.

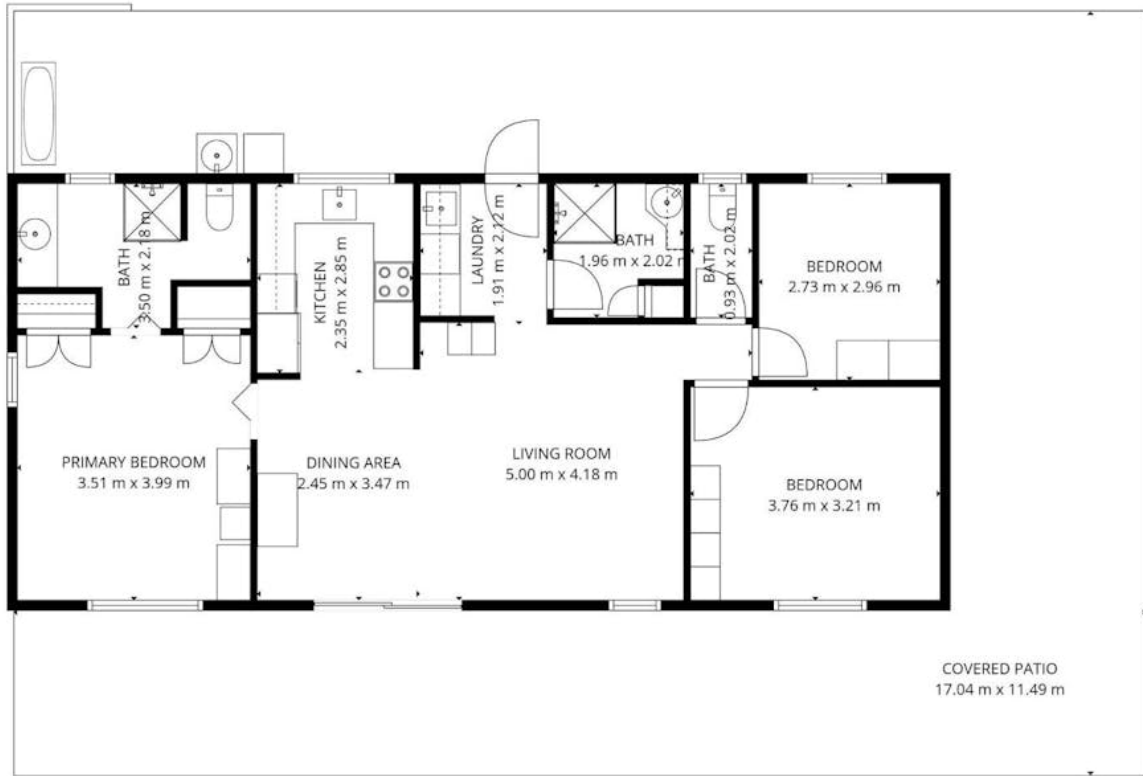
Other features: Close to Shops, Openable Windows

- Land Area 1,158.00 square metre
- Bedrooms: 3
- Bathrooms: 2
- 4 car carport
- Ensuite









**TOTAL: 87 m2**  
1st floor: 87 m2  
EXCLUDED AREAS: COVERED PATIO: 104 m2, WALLS: 6 m2  
FLOOR PLAN CREATED BY CUBICASA APP. MEASUREMENTS DEEMED HIGHLY RELIABLE BUT NOT GUARANTEED.

