



11 Impey Avenue, TIN CAN BAY, QLD 4580

THIS IS WHAT LIVING IN PARADISE IS LIKE

Located only one street from the water and surrounded by a peaceful nature reserve in Tin Can Bay, this fully renovated home has all the bells and whistles, including the lifestyle perks you could ever dream of.

This lifestyle property includes:

- * A dream kitchen central to the home with modern appliances and great storage
- * Great sized family lounge room with air conditioning
- * Rumpus room with dual entry for the pilates or a private TV room
- * 3 generous sized bedrooms, all with built in robes and ceiling fans
- * Study or music room complete with ceiling fan and storage
- * There are two exceptional bathrooms to service your needs
- * Outside is a tranquil oasis with birds chirping and the gentle swoosh of the bay in the background

TYPE: For Sale

INTERNET ID: 22P1689

SALE DETAILS

\$875,000

CONTACT DETAILS

Elders Real Estate Gympie

153 Mary Street

Gympie, QLD

07 5482 6444

Shellie Bennett

#0414 632 960#

- * Outdoor entertaining on the deck overlooking nature's playground
- * Room for a spa or a pop up pool
- * 2 Car tandem garage and a carport for your convenience
- * Solar electricity to subsidise those pesky power bills
- * A large garden shed to store your mower, gardening tools and bike
- * 1,000L rainwater tank to water the garden
- * The lovely front courtyard lends itself to sit and ponder the day away
- * Fruit and vegetable gardens will keep you fed for quite some time to come including banana, mango, strawberry, tomatoes, lemons and much more.

Tin Can Bay offers a unique lifestyle right on the doorstep of Rainbow Beach and K'gari. All of this and more could be yours!

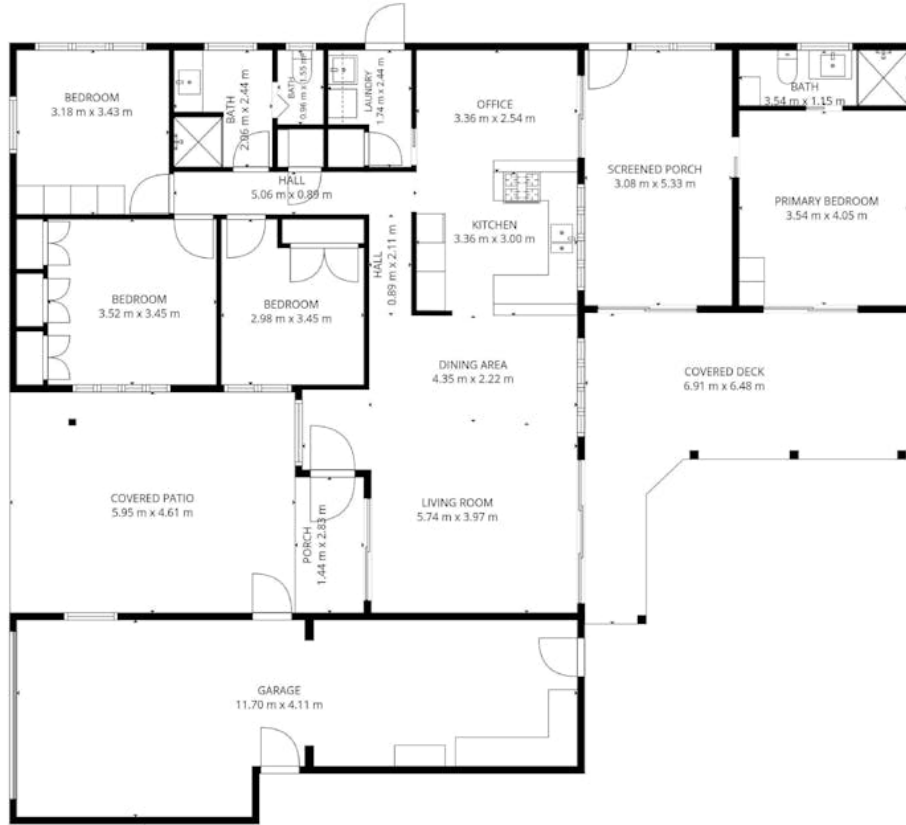
Call Shellie Bennett on 0414 632 960 today to schedule your private inspection.

- Land Area 600.00 square metres
- Bedrooms: 3
- Bathrooms: 2
- Double garage
- Single carport









TOTAL: 123 m2

1st floor: 123 m2

EXCLUDED AREAS: GARAGE: 41 m2, SCREENED PORCH: 16 m2, PORCH: 4 m2, COVERED DECK: 26 m2, COVERED PATIO: 27 m2, WALLS: 15 m2

FLOOR PLAN CREATED BY CUBICASA APP. MEASUREMENTS DEEMED HIGHLY RELIABLE BUT NOT GUARANTEED.

