



66 Investigator Avenue, COOLOOLA COVE, QLD 4580

Coastal Lifestyle Living with Space & Potential

Don't miss this exceptional Cooloola Cove opportunity - a quality brick home with space, privacy, and lifestyle appeal.

Proudly presented to the market, this well-maintained brick residence offers the perfect combination of comfort, practicality, and future potential, set on an impressive approximately 2,017m² parcel of gently sloping land in a sought-after Cooloola Cove location.

Designed for easy living, the home features a spacious open plan layout with a seamless flow between the kitchen, dining, and living areas. Neutral tones throughout create a bright and inviting atmosphere, while the low maintenance design makes this property ideal for those seeking a relaxed lifestyle without the upkeep.

The centrally located kitchen is well equipped with electric appliances, ample storage, and a functional layout perfect for everyday living and entertaining. The home offers three generous bedrooms, all with built-in wardrobes, while the air-conditioned living area ensures year round comfort. The well-appointed bathroom includes a separate bathtub, complemented by a separate toilet for added convenience.

TYPE: For Sale

INTERNET ID: 22P1690

SALE DETAILS

\$775,000

CONTACT DETAILS

Elders Real Estate Gympie

153 Mary Street

Gympie, QLD

07 5482 6444

Shellie Bennett

#0414 632 960#

Step outside and discover an outstanding outdoor entertaining space, with a large covered rear patio overlooking the fully fenced backyard and peaceful adjoining nature reserve. Whether enjoying your morning coffee, hosting family and friends, or simply relaxing in the serenity of your surroundings, this space delivers a true sense of privacy and tranquillity.

For those needing extra storage, workspace, or room for the toys, the property features a 6m x 6m Colorbond shed with an attached single carport. With excellent side access and plenty of room for additional shedding, vehicles, boats, caravans, or future improvements, the possibilities are endless.

Ideally positioned near the stunning natural attractions of the Cooloola Coast, Rainbow Beach, and Tin Can Bay, this property presents a rare opportunity to secure space, lifestyle, and value in a peaceful coastal community.

What we love:

- * Quality brick residence set on an impressive approx. 2,017m² gently sloping block in sought-after Cooloola Cove
- * Spacious open-plan living design with neutral décor and a low-maintenance layout
- * Three bedrooms with built-in wardrobes and a comfortable air-conditioned living area
- * Functional central kitchen with electric appliances and ample storage
- * Well-appointed bathroom with separate bathtub plus separate toilet
- * Large covered rear entertaining area overlooking a peaceful nature reserve backdrop
- * 6m x 6m Colorbond shed with attached single carport and generous side access
- * Excellent lifestyle location close to Cooloola Coast, Rainbow Beach, and Tin Can Bay

Properties offering this much land, infrastructure, and lifestyle appeal are becoming increasingly hard to find - act quickly to arrange your inspection before this opportunity is gone.

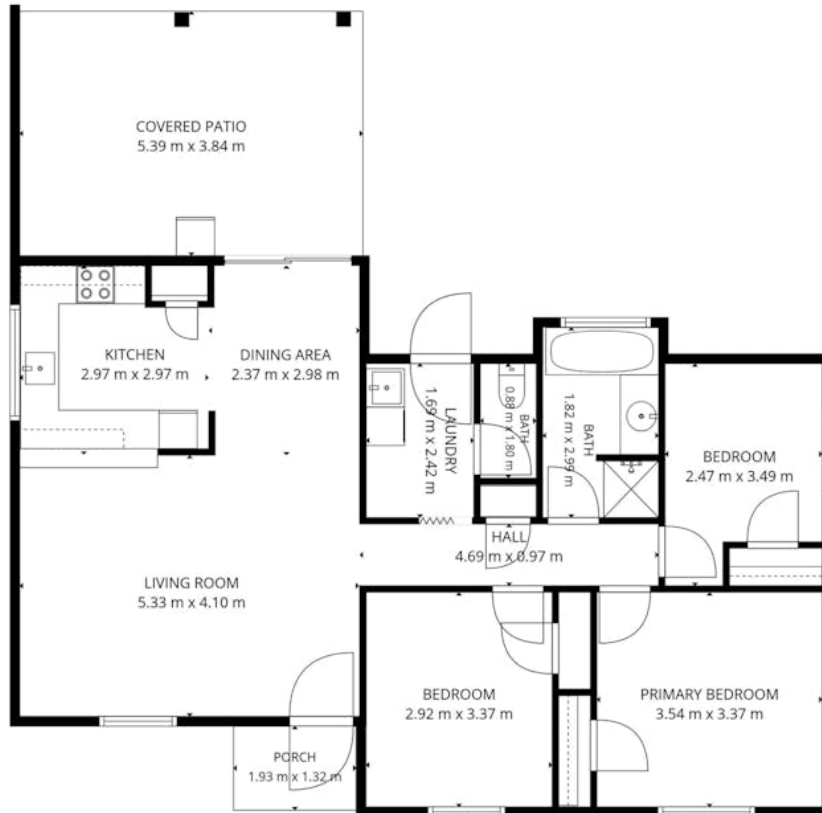
Contact Shellie Bennett on 0414 632 960 to arrange a private inspection today!

Other features: Openable Windows

- Land Area 2,017.00 square metres
- Bedrooms: 3
- Bathrooms: 1
- Double garage
- Single carport







TOTAL: 89 m2

1st floor: 89 m2

EXCLUDED AREAS: PORCH: 3 m2, COVERED PATIO: 21 m2, WALLS: 7 m2

FLOOR PLAN CREATED BY CUBICASA APP. MEASUREMENTS DEEMED HIGHLY RELIABLE BUT NOT GUARANTEED.

