



42 Friesian Court
Chatsworth



42 Friesian Court, CHATSWORTH, QLD 4570

Acreage, Studio, Shed and Great Location!

Positioned in the highly sought after Chatsworths Manor Park, this thoughtfully designed and exceptionally well appointed family home offers space, comfort, accessibility, and lifestyle on a beautifully presented acreage property.

Featuring four generous bedrooms and two disability friendly bathrooms, this home has been carefully designed to accommodate modern family living while providing exceptional accessibility throughout.

The heart of the home is the light filled open plan living, dining, and kitchen area, enhanced by high ceilings and air conditioning for year round comfort. Large windows capture picturesque views across the property, creating a bright and welcoming space for both everyday living and entertaining.

The well appointed kitchen is centrally located and features a large walk in pantry, four burner gas cooktop, electric wall oven, dishwasher, and ample storage, making it as practical as it is stylish.

The spacious master suite has been purpose built with accessibility in mind, offering

The particulars contained herein are supplied for information only and shall not be taken as a representation in any respect on the part of the vendor or its agent. Interested parties should contact the nominated person or office for full and current details.

TYPE: For Sale

INTERNET ID: 22P1699

SALE DETAILS

\$1,195,000

CONTACT DETAILS

Elders Real Estate Gympie

153 Mary Street

Gympie, QLD

07 5482 6444

Ian Partington

0407746280

ramp access and direct entry from the garage via sliding doors. The ensuite includes a fully accessible wet room, raised height toilet, and walk in wardrobe, while air conditioning ensures comfort in every season.

The remaining three bedrooms are generously sized and include built in wardrobes and ceiling fans. Wide hallways, the main bathroom, and laundry have also been designed to accommodate disability access throughout the home.

Glass concertina doors seamlessly connect the indoor living spaces to the rear verandah, creating the perfect setting for entertaining family and friends or simply relaxing and enjoying the afternoon breezes.

Outside, the property continues to impress with a substantial 10.5m x 9m shed complete with an internal air conditioned studio featuring a kitchenette, shower, and toilet. Additional features include double roller door access and a greenhouse, offering incredible versatility for hobbies, business use, guest accommodation, or extra living space.

Property Features:

- * Four spacious bedrooms with built in wardrobes
- * Two disability friendly bathrooms
- * Purpose designed accessibility features throughout
- * Air conditioned open plan living and master bedroom
- * 2.7m ceiling heights throughout
- * 6kW solar system with 9.6kW battery storage
- * UV water filtration system servicing both the home and studio
- * Four car accommodation (two in shed, two under carport)
- * Four 22,700L water tanks
- * Security screens throughout
- * Fully insulated home
- * Established orchard with a large variety of fruit trees
- * Large shed with self-contained studio and greenhouse

Conveniently located just 11 minutes from Gympie Centro Shopping Centre, approximately 55 minutes to Noosa's renowned beaches, around one hour to Sunshine Coast Airport, and less than two hours to Brisbane Airport, this exceptional property offers the perfect balance of peaceful country living and modern convenience.

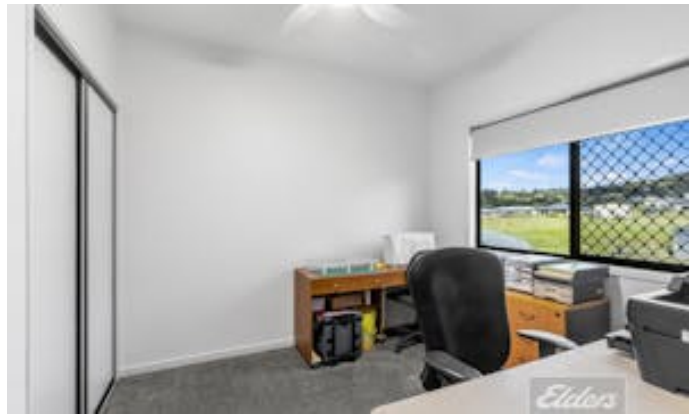
This thoughtfully designed home presents a rare opportunity to secure a versatile lifestyle property with outstanding accessibility and premium features throughout.

For further information or to arrange your private inspection, contact Ian Partington on 0407 746 280 or Casey Hart on 0434 163 111 today.

Other features: Carpeted, Close to Schools, Disabled Access, Kitchenette

- Land Area 4,039.00 square metres
- Bedrooms: 4
- Bathrooms: 3
- 4 car carport
- Ensuite









AREAS	m ²
Dwelling	175.96
Verandah	59.82
Carport	58.50
TOTAL	294.28

42 Friesian Crt, Chatsworth 4570



Indicative only. Outlines are approximate. All information is gathered from sources which we believe to be reliable. However, we cannot guarantee its accuracy and interested parties should rely on their own due diligence. The floor plan should be used as a guide only.