

## 6 Osborne Street, WOLLONGONG, NSW 2500

### Office or Retail Space!

Centrally located in popular Osborne Street Wollongong.

- Modern and spacious commercial house of approx. 118m2 -
- Excellent exposure, located on a Flat block with rear lane access
- Featuring three (3) offices, kitchen and bathroom facility, internal laundry and full kitchen
- Rear veranda & air-conditioned
- Flexible lease terms

Located meters away from Wollongong Train Station and free shuttle buses, and only minutes to Wollongong Hospitals, CBD and beaches

- Land Area 118.00 square metres
- Commercial Type:
- Building Area: 118.00 square metres

**TYPE:** For Lease

**INTERNET ID:** 23222636

#### RENTAL DETAILS

**Rent / Lease:**

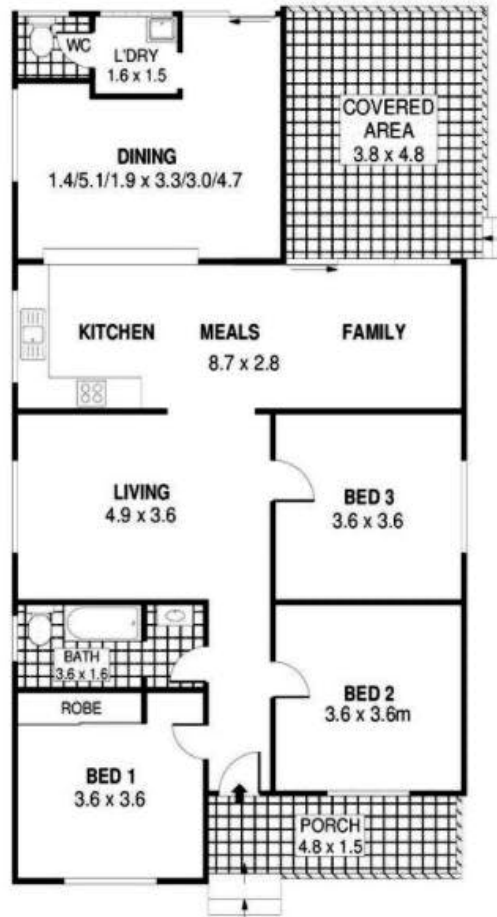
[Expressions of Interest](#)

#### CONTACT DETAILS

**Elders Real Estate  
Wollongong**  
353 Crown Street  
WOLLONGONG, NSW  
02 4228 7878

**Daniel Niceski**





0 1 2 3 4 5 SCALE (METRES)

PLANS SHOWN ONLY INDICATIVE OF LAYOUT. DIMENSIONS ARE APPROXIMATE.  
Ref No: 30364

INT : 118m<sup>2</sup>  
EXT : 25m<sup>2</sup>

6 OSBOURNE STREET

WOLLONGONG