



70 Lakes Drive, LAIDLEY HEIGHTS, QLD 4341

The Ultimate Oasis On Lake Dyer

Presenting 70 Lakes Drive, Laidley Heights - a stunning lifestyle property that captures the essence of peaceful country living with views over Lake Dyer. Set on 1.5 acres of beautifully maintained land, this spacious home offers the perfect balance of natural beauty and modern convenience, just minutes from town and a short drive to Plainland.

This two-storey residence features four generously sized bedrooms, two bathrooms, and three versatile living spaces in an open-plan layout. Downstairs is tiled for easy maintenance and comfort, while upstairs is carpeted to provide a warm and quiet retreat. The well-appointed kitchen includes an electric cooktop, double stainless-steel sink, walk-in pantry, and is positioned to service both the dining and living areas with ease.

Outdoors, the property truly shines. The expansive patio is ideal for entertaining and takes full advantage of the breathtaking lake views. A built-in BBQ area and fire pit make this the perfect space for year-round gatherings. The gardens are established and manicured, with a dedicated fruit and vegetable area for those seeking a more self-sufficient lifestyle.

Additional features include a 6x6 metre shed, a 3x3 metre tool shed, a double carport,

The particulars contained herein are supplied for information only and shall not be taken as a representation in any respect on the part of the vendor or its agent. Interested parties should contact the nominated person or office for full and current details.

TYPE: For Sale

INTERNET ID: 25P0328

SALE DETAILS

Contact Agent

CONTACT DETAILS

Redlands

7/123-135 Bloomfield Street
Cleveland, QLD
07 3286 6587

Jordan Rosenthal
0406098515

and a separate double caravan port, offering excellent storage and functionality. The home is equipped with a solar power system, trickle feed town water, and a septic system, ensuring practical living with long-term savings.

Located only five minutes from Laidley's town centre and 20 minutes from Plainland, this property provides the best of both worlds - serene country living with all essential services within easy reach. Whether you're looking to upsize, downsize, or escape the pace of city life, 70 Lakes Drive offers a rare opportunity to own a lakeside home in one of the Lockyer Valley's most sought-after lifestyle areas.

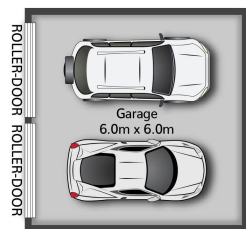
Other features: Area Views, Bush Retreat, Car Parking - Surface, Carpeted, Close to Schools, Close to Shops

- Land Area 6,000.00 square metres
- Building Area: 224.00 square metres
- Bedrooms: 4
- Bathrooms: 2
- Car Parks: 8
- Ensuite





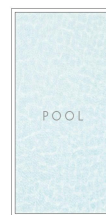




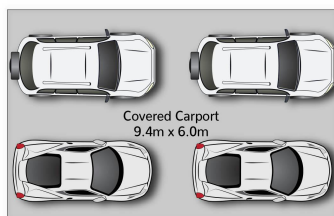
(Not In Position)



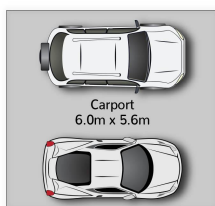
(Not In Position)



(Not In Position)



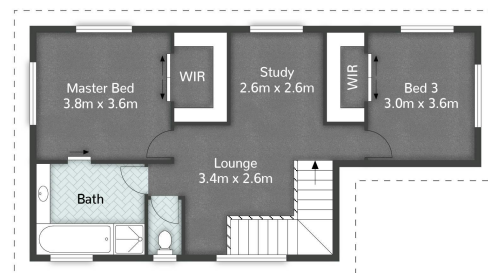
(Not In Position)



(Not In Position)



GROUND FLOOR



FIRST FLOOR

70 Lakes Drive LAIDLEY HEIGHTS

4 | 2 | 8 | 224m²