



2/25 Osterley Road, CARINA HEIGHTS, QLD 4152

Stylish 2#Bed Villa in one of Brisbane's most desirable suburbs

Nestled in one of Brisbane's most desirable suburbs, this beautifully maintained low-set villa offers a comfortable and modern lifestyle perfect for downsizers, young professionals, or small families. The home features two generously sized, carpeted bedrooms, both equipped with built-in robes and ceiling fans. The well-appointed bathroom includes a shower, full bathtub, vanity, and a separate toilet, offering convenience and practicality for everyday living.

The open-plan living and dining area is enhanced with elegant plantation shutters and ceiling fans, creating a light-filled and welcoming space for relaxing or entertaining. The spacious kitchen is designed for ease of use, boasting ample cupboard and drawer storage, a pantry, electric stove and oven, range hood, and a double stainless steel sink. For added functionality, the laundry is discreetly located within the garage.

Throughout the home, blinds and ceiling fans ensure comfort, while a split-system air-conditioning unit keeps the entire space cool year-round. Outdoors, the large private courtyard and paved patio area are ideal for alfresco entertaining or simply enjoying the peaceful surrounds. The property also includes a single lock-up garage and electric hot water system.

TYPE: Under Contract

INTERNET ID: 25P0386

SALE DETAILS

Contact Agent

CONTACT DETAILS

Redlands

7/123-135 Bloomfield Street
Cleveland, QLD
07 3286 6587

Jordan Rosenthal
0406098515

Located in a quiet pocket of Carina Heights, this villa benefits from a leafy, family-friendly environment with easy access to nearby parks and green spaces. Just moments away is the expansive Whites Hill Reserve, offering bushland, walking trails, picnic areas, playgrounds, and scenic lookout points. Local parks such as Abbott Street Park, Anzac Road Park, and Buckley Street Park are perfect for kids and pets alike.

Convenience is a standout feature, with Westfield Carindale just 1.3 kilometres away, providing a full range of shopping, dining, and entertainment options. Local convenience strips along Old Cleveland Road and Winstanley Street offer cafes, grocery stores, chemists, and specialty shops. Nearby community hubs include Carina Leagues and Bowls Clubs, gyms, and a variety of medical centres such as Carina Medical & Specialist Clinic.

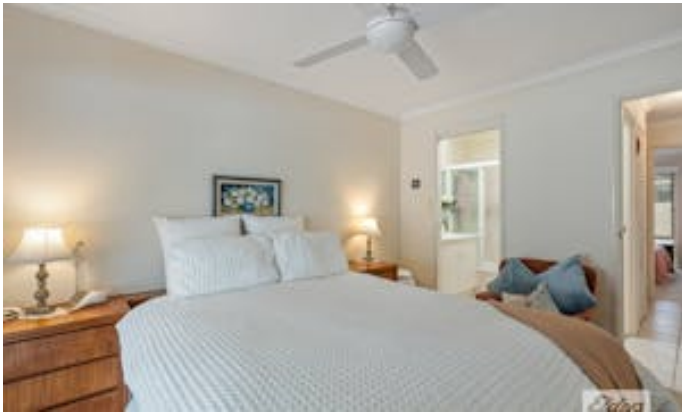
Families will appreciate the excellent local education options, including Whites Hill State College (Prep to Year 12), Carina State School, St Martin's Catholic Primary School, and San Sisto College for girls. Public transport is easily accessible, with regular bus services running along Stanley Road, Old Cleveland Road, Meadowlands Road, and Creek Road, ensuring smooth connectivity to the Brisbane CBD and surrounding areas. For those who drive, the Gateway Motorway is nearby, providing quick access across greater Brisbane.

This home delivers an appealing blend of comfort, convenience, and community. Located just 15 minutes from Brisbane's CBD and close to the vibrant Carindale and Camp Hill café scenes, 2/25 Osterley Road offers an enviable low-maintenance lifestyle in a quiet and attractive locale-ready for you to move in and simply enjoy.

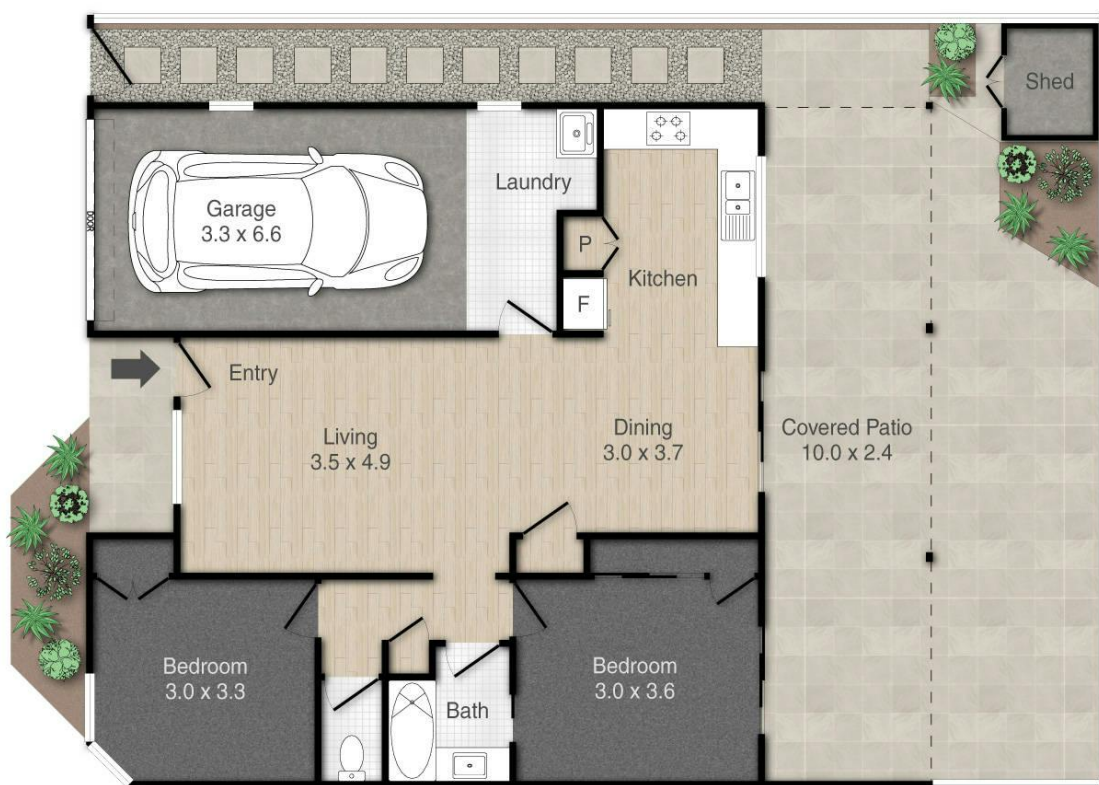
Other features: Close to Schools, Close to Shops, Close to Transport, Openable Windows, Roller Door Access

- Land Area 100.00 square metres
- Building Area: 114.00 square metres
- Bedrooms: 2
- Bathrooms: 1
- Car Parks: 1
- Ensuite









2/25 Osterley Street, Carina Heights

PLEASE NOTE THIS PLAN IS FOR MARKETING PURPOSES AND IS TO BE USED AS A GUIDE ONLY. ALL MARKINGS, MEASUREMENTS, AREAS, AND LAYOUT ARE INDICATIVE ONLY AND INTERESTED PARTIES SHOULD MAKE THEIR OWN ENQUIRIES BEFORE MAKING ANY DECISIONS. FLOOR COVERINGS INDICATED ARE FOR ILLUSTRATIVE PURPOSES ONLY AND MAY NOT ACCURATELY PORTRAY ACTUAL FLOOR COVERINGS OF THE PROPERTY. NO GUARANTEES ARE MADE REGARDING THE INFORMATION CONTAINED IN THIS PLAN AND NO LIABILITY FOR ANY INACCURACIES IS ACCEPTED.

