

6 Abraham Street, THORNLANDS, QLD 4164

UNDER CONTRACT Modern Elegance and Effortless Living in Sought-After Kinross Estate

Welcome to 6 Abraham Street, Thornlands - a beautifully presented 4-bedroom, 2-bathroom home with a double garage on a low-maintenance 350m² block in the highly sought-after Kinross Estate. From the moment you arrive, the property's immaculate street appeal, manicured gardens, and modern black timber fencing set the tone for what awaits inside.

Step through the front door and discover a thoughtfully designed home that perfectly balances style and functionality. The open-plan kitchen is the heart of the home, featuring an island bench, ample under-bench and overhead storage, stone benchtops, a 5-burner SMEG gas stove with oven, stainless steel rangehood, subway tile splashback, dual black sink with stainless fixtures, and a dishwasher. A spacious walk-in pantry with shelving keeps everything organised. The kitchen flows seamlessly into the main living and dining area, highlighted by a grey feature wall, ceiling fan, and split-system air conditioning, with sliding doors opening to the outdoor entertaining area. A second living/lounge room offers extra space for family relaxation, complete with ceiling fan and feature walls.

The master bedroom is generous in size with a walk-in robe fitted with custom shelving and drawers. Its freshly renovated ensuite boasts floor-to-ceiling tiles, a striking black feature tile in the shower and on the floor, a custom vanity, extra storage, and sleek

TYPE: For Sale

INTERNET ID: 25P0389

SALE DETAILS

Contact Agent

CONTACT DETAILS

Redlands

7/123-135 Bloomfield Street
Cleveland, QLD
07 3286 6587

Jordan Rosenthal
0406098515

The particulars contained herein are supplied for information only and shall not be taken as a representation in any respect on the part of the vendor or its agent. Interested parties should contact the nominated person or office for full and current details.

black fixtures. Three additional bedrooms all feature ceiling fans, with two offering built-in robes and one enjoying its own walk-in robe. The main bathroom mirrors the luxe style of the ensuite, with floor-to-ceiling tiling, black feature tiles, a bathtub, modern black vanity, and stainless steel fixtures, plus a separate toilet for convenience.

Outside is designed for easy entertaining and low-maintenance living. The undercover area extends to a stunning two-tiered deck with an electric blind, complemented by concrete pathways, astro turf, and a fully fenced yard. The double driveway leads to the secure double garage, while the landscaped front yard ensures year-round street appeal.

Throughout the home, timber-look vinyl flooring and plantation shutters add a touch of sophistication. The property also offers gas cooking and gas hot water for modern efficiency.

Perfectly positioned, you're only moments from the new Paradise Garden Shopping Village, complete with Coles, Liquorland, cafes, restaurants, gyms, and beauty salons. Nature lovers will appreciate Weippin Street and Scribbly Gums Conservation areas with kilometres of walking and mountain biking trails, while Walter Drive Park is just steps away. Families will benefit from being in the catchment for Bay View State School and Cleveland District State High School, with Carmel College, Sheldon College, and Faith Lutheran College also nearby. With the Gold Coast only 50 minutes away and Brisbane just 35 minutes, this home offers the perfect blend of lifestyle and location.

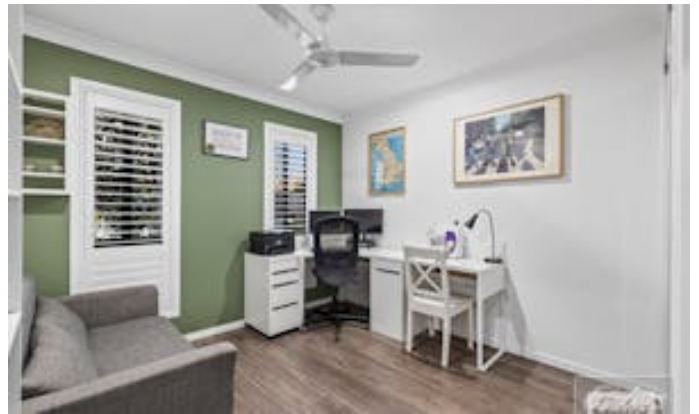
6 Abraham Street is more than just a house - it's a place to call home.

"Your Dream Lifestyle Has A New Address"

Other features: Area Views, Bush Retreat, Close to Schools, Close to Shops, Close to Transport, Creative, Heating

- Land Area 350.00 square metres
- Bedrooms: 4
- Bathrooms: 2
- Car Parks: 2
- Ensuite
- Floorboards









6 Abraham Street, Thornlands



PLEASE NOTE THIS PLAN IS FOR MARKETING PURPOSES AND IS TO BE USED AS A GUIDE ONLY. ALL MARKINGS, MEASUREMENTS, AREAS, AND LAYOUT ARE INDICATIVE ONLY AND INTERESTED PARTIES SHOULD MAKE THEIR OWN ENQUIRIES BEFORE MAKING ANY DECISIONS. FLOOR COVERINGS INDICATED ARE FOR ILLUSTRATIVE PURPOSES ONLY AND MAY NOT ACCURATELY PORTRAY ACTUAL FLOOR COVERINGS OF THE PROPERTY. NO GUARANTEES ARE MADE REGARDING THE INFORMATION CONTAINED IN THIS PLAN AND NO LIABILITY FOR ANY INACCURACIES IS ACCEPTED.