

15 Jerrys Place, THORNLANDS, QLD 4164

Bushland Serenity Meets Modern Family Living

Welcome to 15 Jerrys Place, Thornlands - a beautifully presented family home that blends comfort, style and convenience with a prime position opposite peaceful bushland.

The heart of the home is the spacious kitchen, perfectly designed for family living and entertaining. Offering a combination of under-bench and overhead storage, a large pantry, generous fridge space, microwave nook and dishwasher, it is both practical and stylish. Stainless steel electric appliances, feature downlights over the island bench, and a convenient power point at the end of the island complete the space. Flowing seamlessly from the kitchen are the open-plan living and dining areas. The dining room captures an outlook of the front yard and the natural bushland across the road, enhanced by pendant lighting, while the living room features a ceiling fan, TV recess, sliding doors to the outdoors and the option for split-system or ducted air conditioning.

The master suite is privately positioned at the rear of the home and offers a tranquil retreat with views over the backyard and bushland. Complete with plush carpet, a ceiling fan, a walk-in robe with built-in shelving and a contemporary ensuite featuring double shower, vanity and toilet with stainless steel fittings, it's the perfect space to unwind. The additional three bedrooms are all carpeted, include built-in robes and ceiling fans, and are located separately down the hall, which can be closed off with a

The particulars contained herein are supplied for information only and shall not be taken as a representation in any respect on the part of the vendor or its agent. Interested parties should contact the nominated person or office for full and current details.

TYPE: For Sale

INTERNET ID: 25P0395

SALE DETAILS

Contact Agent

CONTACT DETAILS

Redlands

7/123-135 Bloomfield Street
Cleveland, QLD
07 3286 6587

Jordan Rosenthal
0406098515

shutter door for added privacy. Centrally placed, the main bathroom showcases modern finishes with a bath, shower, vanity and feature tiles. A separate laundry with cabinetry, bench space and direct outdoor access adds to the home's functionality.

Step outside to the undercover entertaining area, tiled and finished with LED downlights, an outdoor fan and privacy screening. The space extends onto timber decking and overlooks the manicured backyard, framed with Colorbond fencing and uninterrupted views of the bushland beyond. A concrete slab behind the side gate provides additional space to securely park a boat, caravan or trailer. Set on a 425m² corner block with no neighbours across the road, this home offers both privacy and lifestyle.

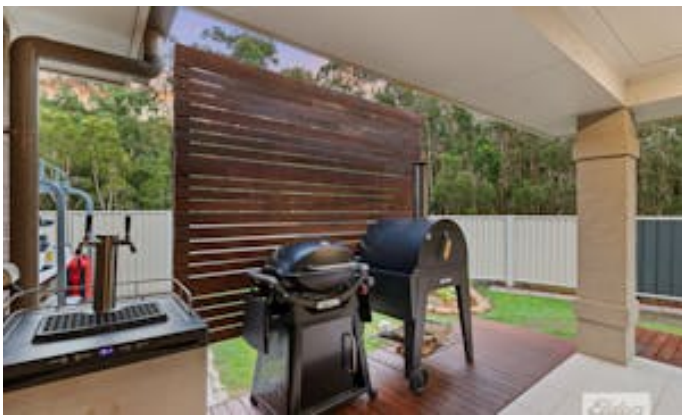
Additional features include downlights throughout, a gas hot water system, solar panels, ducted aircon, water tank, full fencing and a double garage with custom epoxy flooring. Across the road, you'll find Thornlands Road Bushland Refuge with walking and cycling tracks, while the waterfront and Scribbly Gum Conservation Area are only a short distance away. Families will love the schooling options, with Thornlands State School and Cleveland District State High School within catchment and private schools such as Sheldon College, Carmel College and Faith Lutheran College close by. Everyday convenience is just minutes away with Crystal Waters Shopping Village, the new Paradise Garden Shopping Village and Victoria Point Precinct, offering dining, gyms, medical services, cinemas and beauty salons. With Brisbane and the Gold Coast both within a 45-minute drive, this location combines bushland serenity with city and coastal accessibility.

15 Jerrys Place is more than a house - it's a home designed for modern family living in one of Thornlands' most peaceful and convenient settings.

Other features: Area Views, Bush Retreat, Car Parking - Surface, Carpeted, Close to Schools, Close to Shops

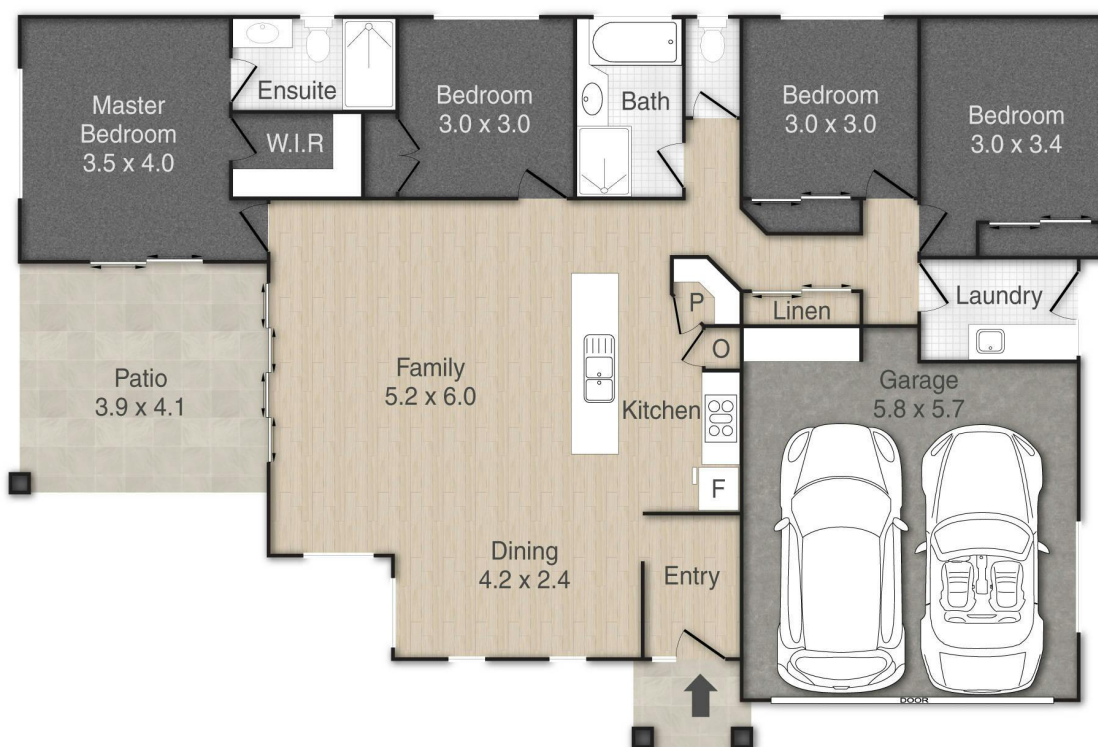
- Land Area 425.00 square metres
- Bedrooms: 4
- Bathrooms: 2
- Car Parks: 2
- Ensuite











15 Jerrys Place, Thornlands

PLEASE NOTE THIS PLAN IS FOR MARKETING PURPOSES AND IS TO BE USED AS A GUIDE ONLY. ALL MARKINGS, MEASUREMENTS, AREAS, AND LAYOUT ARE INDICATIVE ONLY AND INTERESTED PARTIES SHOULD MAKE THEIR OWN ENQUIRIES BEFORE MAKING ANY DECISIONS. FLOOR COVERINGS INDICATED ARE FOR ILLUSTRATIVE PURPOSES ONLY AND MAY NOT ACCURATELY PORTRAY ACTUAL FLOOR COVERINGS OF THE PROPERTY. NO GUARANTEES ARE MADE REGARDING THE INFORMATION CONTAINED IN THIS PLAN AND NO LIABILITY FOR ANY INACCURACIES IS ACCEPTED.

