

## 29 Viola Drive, REDLAND BAY, QLD 4165

Rare Acreage-Style Living with Pool & Shed in the Heart of Redland Bay

### THE PROPERTY

Set on one and a half acres of prime land, this expansive brick residence offers a rare opportunity to enjoy acreage-style living without sacrificing convenience. Positioned right in the heart of Redland Bay, this impressive property combines space, privacy, and lifestyle-complete with a large pool, multiple entertaining areas, and substantial shedding.

### THE HOUSE

The home features five generous bedrooms, including a spacious master suite with a walk-in wardrobe and private ensuite. Two large bathrooms service the home, providing comfort and practicality for family living.

Designed with space in mind, the home offers two large open-plan living areas, allowing flexibility for family zones, entertaining, or quiet relaxation. The oversized kitchen sits at the heart of the home, overlooking the open living areas, outdoor entertaining space, and the pool-perfect for keeping connected with family and guests while hosting.

**TYPE:** For Sale

**INTERNET ID:** 25P0436

**SALE DETAILS**

**CONTACT AGENT**

**CONTACT DETAILS**

**Redlands**

7/123-135 Bloomfield Street  
Cleveland, QLD  
07 3286 6587

**Alex Tincknell**

0438 882 299

Comfort is assured year-round with ducted air conditioning throughout the home.

## OUTDOOR AMENITIES

Step outside to a true lifestyle haven featuring a huge swimming pool complemented by a large covered outdoor entertaining area, ideal for hosting gatherings or enjoying relaxed weekends at home. For those needing space for hobbies, storage, or work, the property includes a 6x6m shed with an expansive undercover workshop area, plus additional covered parking options.

## THE LOCATION

Offering the best of both worlds, this property delivers the freedom of acreage living while being just down the road from Redland Bay's shopping precincts and the water's edge. Enjoy easy access to local shops, waterfront walking paths, and all the amenities Redland Bay has to offer-without the compromise of distance.

## EXTRAS

Double car garage

6x6m shed plus large carport

Solar system on the roof

Ducted air conditioning

## UNIQUE SELLING POINTS

Properties of this size and calibre, in such a central Redland Bay location, are exceptionally rare. With space, lifestyle features, and unbeatable convenience, 29 Viola Drive is the ultimate family acreage retreat without leaving town.

Other features: Bush Retreat, Car Parking - Surface, Carpeted, Close to Schools, Close to Shops, Close to Transport

- Land Area 6,863.00 square metres
- Bedrooms: 5
- Bathrooms: 2
- Car Parks: 6
- 3 car carport
- Ensuite

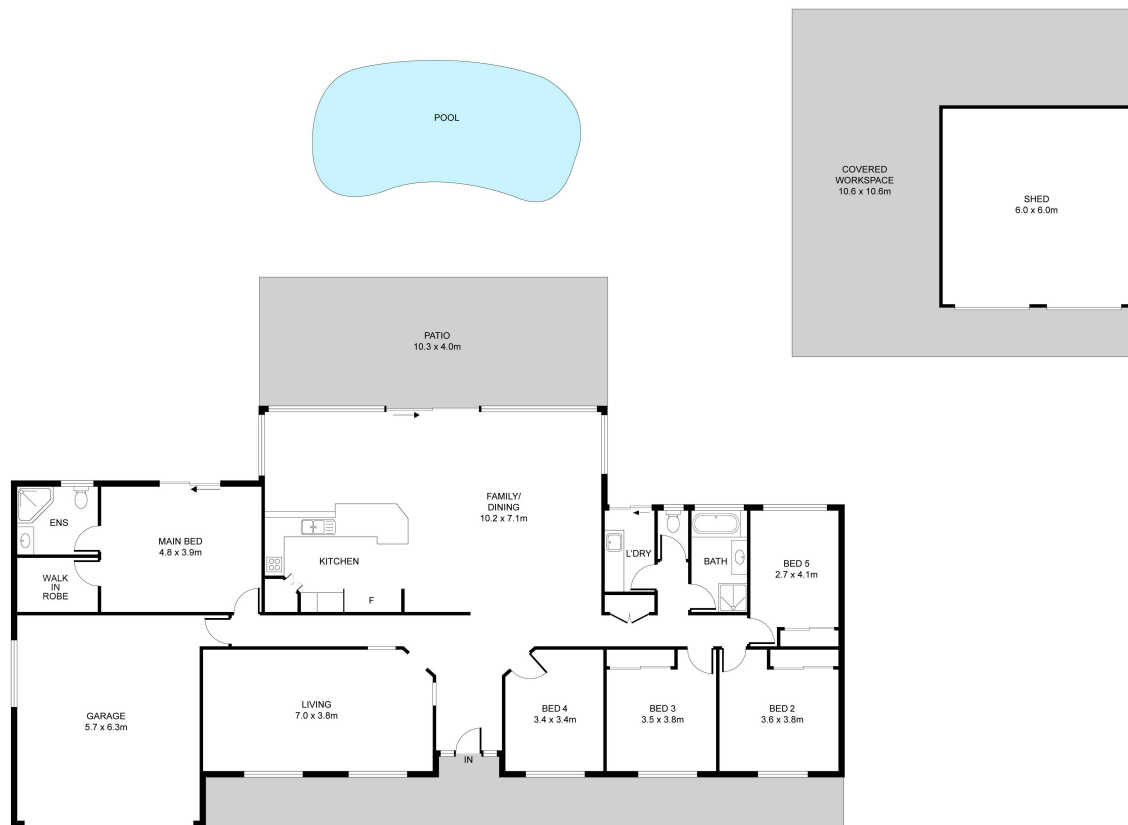












29 VIOLA DRIVE, REDLAND BAY

Internal 245m<sup>2</sup> | Externals 74m<sup>2</sup> | Shed/ Workshop 112m<sup>2</sup> | Total 431m<sup>2</sup>

Every attempt has been made to ensure the accuracy of this floorplan, however, plans are for marketing purposes only. All dimensions are approximate and not to scale, they are subject to errors and inaccuracies.