



3 Karri Court, VICTORIA POINT, QLD 4165

Private Family Retreat on 1,000sqm with Shed, Space & Exceptional Outdoor Living

THE PROPERTY

Tucked away in a quiet and private cul-de-sac, surrounded by other spacious homes on large blocks, this beautifully presented residence sits proudly on a generous 1,000sqm parcel in sought-after Victoria Point. Set back from the street and offering outstanding privacy, the home combines space, functionality and lifestyle to create the perfect family retreat.

With expansive outdoor entertaining, a massive shed and plenty of room for kids to play, this is a property designed for relaxed living with space to grow.

THE HOME

Inside, the home offers a warm and inviting layout with multiple living zones designed to suit modern family life. The main lounge features beautiful bay windows, filling the space with natural light and creating a welcoming atmosphere.

TYPE: For Sale

INTERNET ID: 25P0454

SALE DETAILS

CONTACT AGENT

CONTACT DETAILS

Redlands

7/123-135 Bloomfield Street
Cleveland, QLD
07 3286 6587

Alex Tincknell

0438 882 299

A separate family room and dining/study area provide additional living spaces, all flowing seamlessly from the kitchen and connecting directly to the outdoor entertaining area - enhancing the home's indoor&##outdoor lifestyle.

The home includes four bedrooms and two bathrooms, with the master bedroom featuring an ensuite, split-system air conditioning and ceiling fan. Built-in wardrobes are included in the main bedroom and two additional bedrooms, while ceiling fans throughout ensure comfort across the home.

The main bathroom offers updated hardware and the convenience of a separate toilet, ideal for family living. A separate laundry adds further practicality.

THE OUTDOOR LIVING

The expansive covered entertaining area is a true highlight of the home. Positioned off the kitchen, dining and family room, it creates a seamless transition between indoor and outdoor living - perfect for entertaining or enjoying everyday family life.

The large backyard provides endless space for children and pets. There is also ample room to further enhance the space with a pool, gardens or additional features if desired.

THE EXTRAS

- 1,000sqm block in a private cul-de-sac
- Set back from the street for added privacy
- 4 bedrooms, 2 bathrooms
- 2 car garage
- Massive 10m x 8m 2 bay shed
- Multiple living zones: lounge, family & dining
- Bay windows in main lounge
- Split-system air conditioning (family room & master bedroom)
- Ceiling fans throughout
- Built-in wardrobes (master + two bedrooms)
- Updated bathroom hardware
- Separate toilet to main bathroom
- Separate laundry
- Large covered outdoor entertaining area
- Additional garden tools shed
- Spacious yard with room for kids, pets or gardens

THE LOCATION

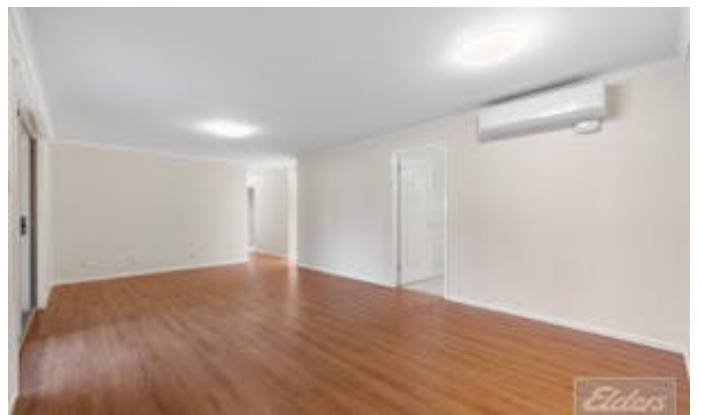
Situated in a peaceful and family-friendly pocket of Victoria Point, this home offers a lifestyle of both space and convenience. You're just minutes from local schools, shopping centres, parklands and the beautiful waterfront. Victoria Point is known for its relaxed bayside feel, strong community and easy access to everything you need.

THE OPPORTUNITY

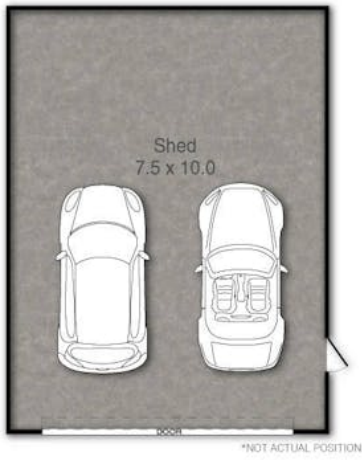
Homes offering this level of space, privacy, shedding and outdoor living on a full 1,000sqm block are always in high demand. Combining functionality, lifestyle and future potential, 3 Karri Court presents an outstanding opportunity to secure a complete family home in Victoria Point.

Other features: Close to Schools, Close to Shops, Close to Transport

- Land Area 1,000.00 square metre
- Bedrooms: 4
- Bathrooms: 2
- Car Parks: 2
- 4 car garage
- Ensuite







3 Karri Court, Victoria Point

PLEASE NOTE THIS PLAN IS FOR MARKETING PURPOSES AND IS TO BE USED AS A GUIDE ONLY. ALL MARKINGS, MEASUREMENTS, AREAS, AND LAYOUT ARE INDICATIVE ONLY AND INTERESTED PARTIES SHOULD MAKE THEIR OWN ENQUIRIES BEFORE MAKING ANY DECISIONS. FLOOR COVERINGS INDICATED ARE FOR ILLUSTRATIVE PURPOSES ONLY AND MAY NOT ACCURATELY PORTRAY ACTUAL FLOOR COVERINGS OF THE PROPERTY. NO GUARANTEES ARE MADE REGARDING THE INFORMATION CONTAINED IN THIS PLAN AND NO LIABILITY FOR ANY INACCURACIES IS ACCEPTED.

