



## 2 Partridge Street, GOOLWA, SA 5214

~ Picture Perfect on Partridge ~

- Land Area 325.00 square metres
- Bedrooms: 3
- Bathrooms: 2
- Double garage

**TYPE:** Sold

**INTERNET ID:** 26P0428

**SALE DETAILS**

**Best Offer by Mon 8th  
November 2021 @  
12pm USP**

**CONTACT DETAILS**

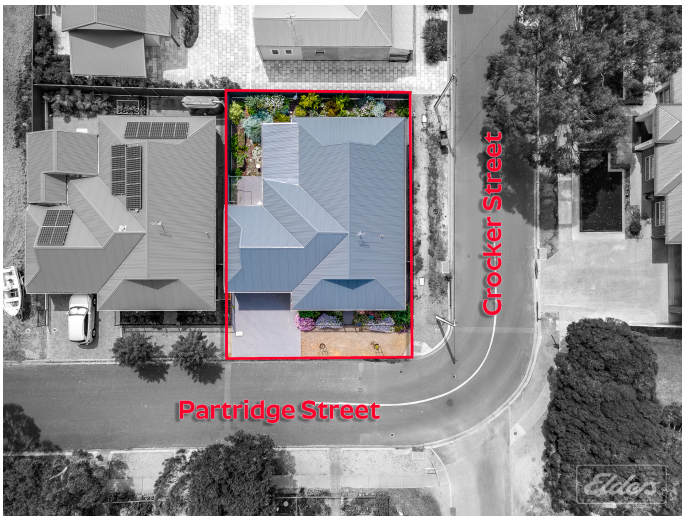
**Elders Goolwa**  
9 Cadell Street  
Goolwa, SA  
08 8555 3511  
RLA: 213003

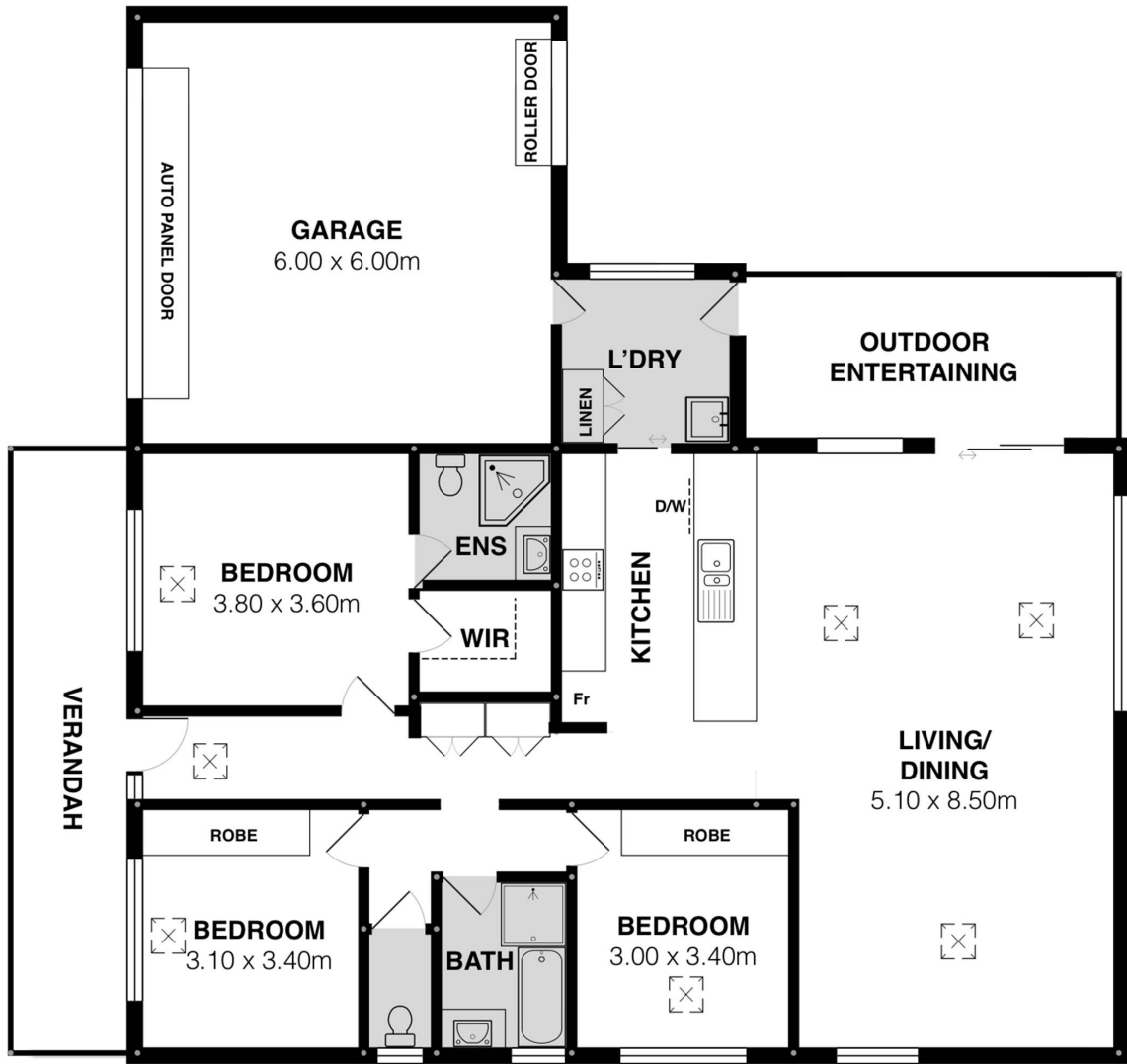
**Lucas Bradley**  
0438 404 492











Scale in metres. This drawing is for illustration purposes only. All measurements are approximate and details intended to be relied upon should be independently verified.

