



3B Dunstall Court, GOOLWA SOUTH, SA 5214

Affordable Living in Sensational Location!

Best Offer By: 12:00pm Friday 1st April, 2022 (Unless Sold Prior)

Price Guide: \$345,000

This brilliant little unit offers a fantastic opportunity for first homeowners, investors or holiday makers alike, located in highly sought-after Goolwa South just metres from the river, South Lakes Golf Course as well as being close to the township & beach as well.

Brick veneer unit, one of only 2 in the group, provides an open lounge / dine / kitchen area, 3 bedrooms, a bathroom with bath, separate toilet & laundry.

Fully secured lock-up single carport through to a freestanding single garage at the rear, ideal for storage of those holiday 'toys' or great as a workshop too.

Neat, easy care, fully fenced rear yard for kids and pets to play too.

Enjoy leisurely bike rides along the river into town, Sunday markets, Bombora for

The particulars contained herein are supplied for information only and shall not be taken as a representation in any respect on the part of the vendor or its agent. Interested parties should contact the nominated person or office for full and current details.

TYPE: Sold

INTERNET ID: 26P1045

SALE DETAILS

**Best Offer By 1/4/22
@ 12pm (USP). Guide
\$345,000**

CONTACT DETAILS

Elders Goolwa
9 Cadell Street
Goolwa, SA
08 8555 3511
RLA: 213003

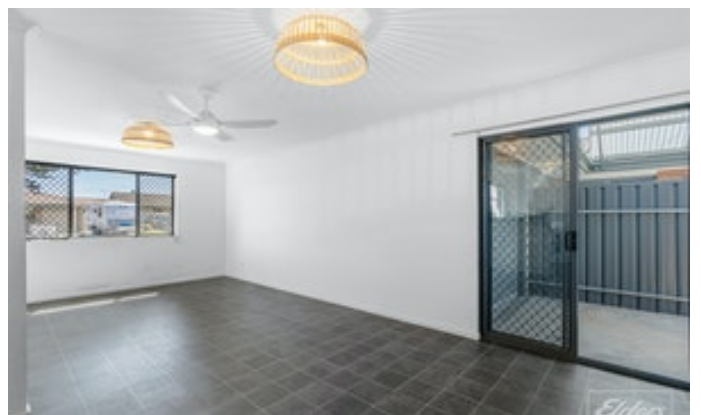
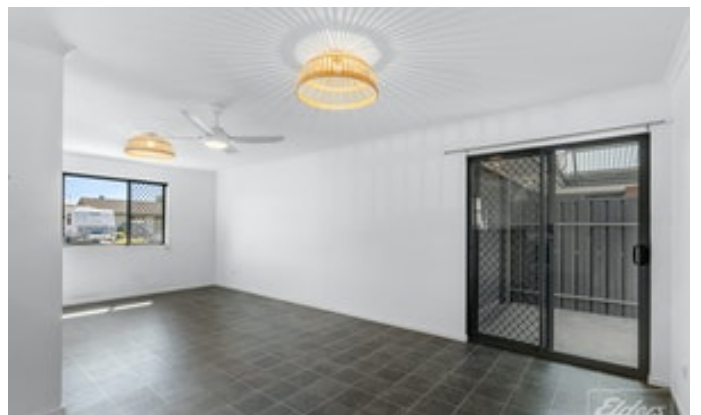
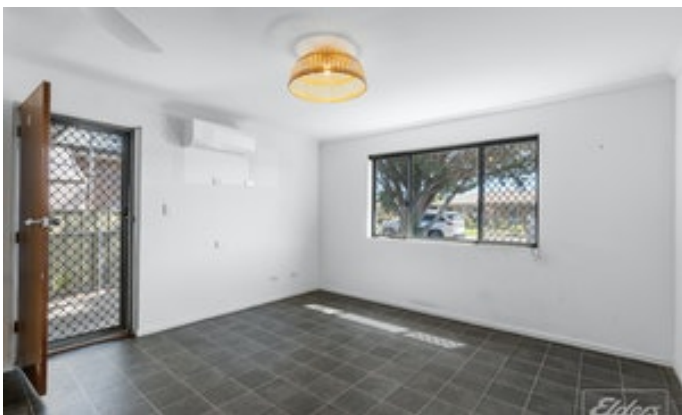
Lucas Bradley
0438 404 492

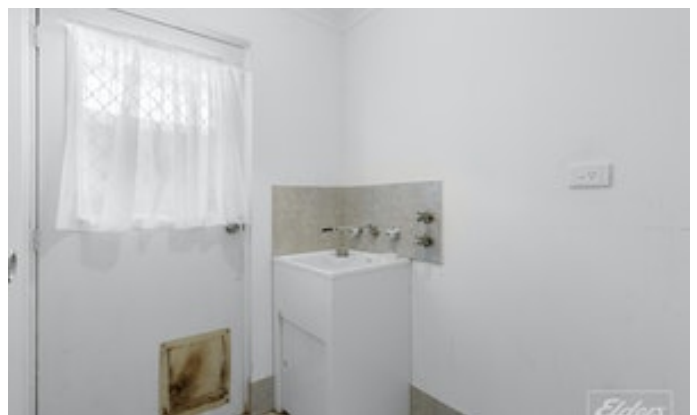
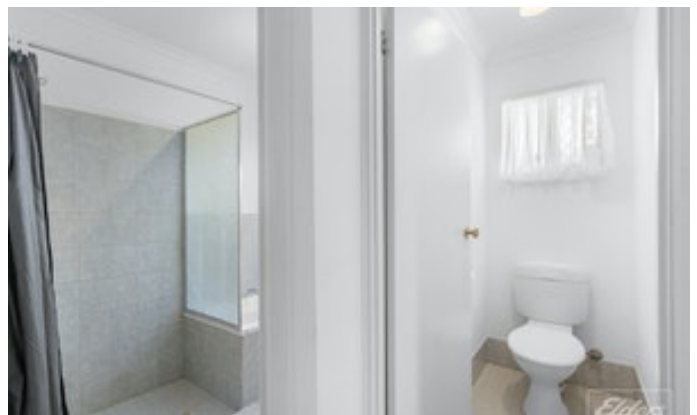
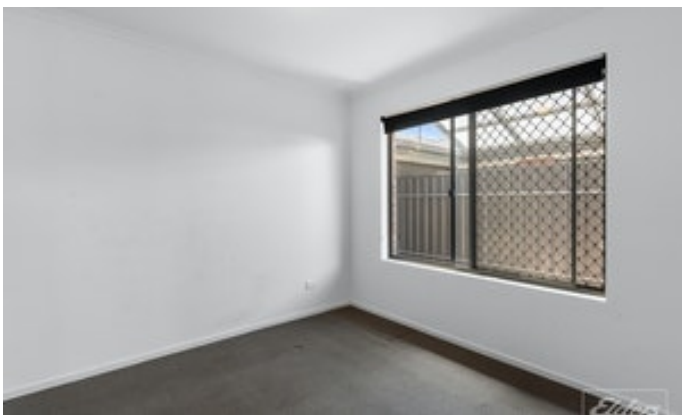
breakie & lunch and Goolwa's playscape playground just moments away. Public boat ramp nearby also where you can enjoy a day on the river.

A great option for those not wanting to spend a fortune but looking for something neat, tidy and most importantly, in the right location!!

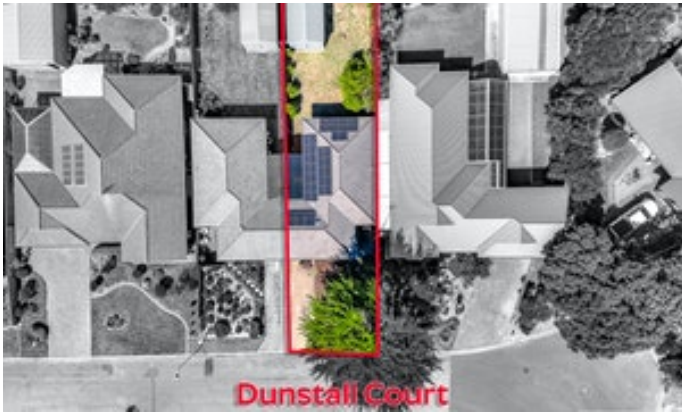
*There are no annual outgoings in relation to the Community Plan. Council Rates, ESL & SA Water fees do apply.

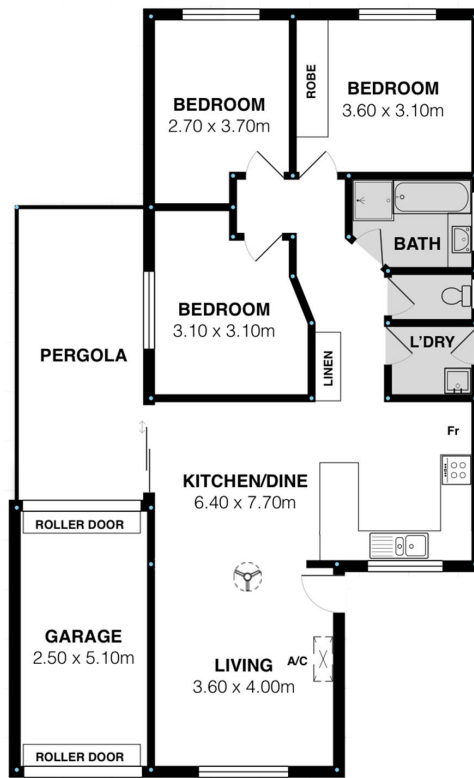
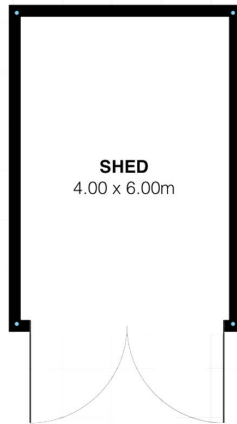
- Land Area 365.00 square metres
- Bedrooms: 3
- Bathrooms: 1
- Single garage
- Single carport
- Air Conditioning











Scale in metres. This drawing is for illustration purposes only. All measurements are approximate and details intended to be relied upon should be independently verified.

