



2 Egret Avenue, GOOLWA SOUTH, SA 5214

Stylish Mid Century Stunner

Chic sophistication while stylishly incorporating its original heritage, this fully renovated and extended holiday home is an absolute showstopper.

Retro vibes flow throughout while offering contemporary style and all the mod-cons we've come to expect, if you're in the market for a holiday escape with room for the whole family, you won't want to miss this one.

Stripped back to its bare bones, the home has had the full treatment with new just about everything and finished off with high-end fixtures and fittings throughout, think 5-star Miami in the 60's.

Offering a total of 6 bedrooms, the home provides excellent accommodation for family & friends along with fabulous living, dining and indoor & outdoor entertaining spaces.

Downstairs includes a spacious living area with kitchenette, 2 King-sized bedrooms and striking new bathroom plus European-style laundry.

TYPE: Sold

INTERNET ID: 26P1267

SALE DETAILS

\$895,000 - \$925,000

CONTACT DETAILS

Elders Goolwa

9 Cadell Street

Goolwa, SA

08 8555 3511

RLA: 213003

Lucas Bradley

0438 404 492

Then head on upstairs where you'll find the main living area with feature gas fireplace, classic dining 'booth' and stunning new kitchen complete with stone benches, BI Microwave, dishwasher and gas cooktop. A servery opens to the outdoor decking but more on that shortly.

The 3 bedrooms upstairs are serviced by the uber cool bathroom with all new hardware and fittings, vanity and feature wall tiling.

Step on outside to the full length front balcony that returns around to the huge entertainers deck complete with festoon lights and automatic retractable awning. Comfortably seating 12 people, here is the perfect place for relaxing brunches and full family BBQ's.

An added bonus is the separate rumpus room that easily doubles as a 6th bedroom, great as a teenager's retreat / sleep-out. (With separate access from the home, this could be your personal lock-up zone if looking at holiday letting).

Fully automated irrigation to the landscaped gardens including 550m² of lush new lawns and mature trees and all fully fenced with lockable gates for peace of mind.

Fire pit area in the backyard for the cooler months and a custom made rowboat outdoor hot & cold shower is another classy little feature.

The Vendors have gone above and beyond with this transformation and have included so many luxury extras, some of which include:

- Automatic blinds to the upstairs living & dining areas
- Block out curtains to all bedrooms
- Fully insulated (walls and ceilings)
- 6kW solar system in place
- Security alarm system and security cameras (all accessible from your phone)
- All asbestos has been removed and replaced with Hardies Scion Board
- New timber sliding doors, new windows and new flooring throughout
- Completely rewired with new switchboard & full internal & external paintwork
- Floodlighting to the front lawns for kids to play at night
- Plus much, much more

There is a 13m long concrete driveway in place and Plan SA Approval for a 9m x 4m shed to be built, perfect for a large boat or storage of those holiday 'toys'.

Positioned in the heart of Goolwa's holiday playground, South Lakes, centrally located between the river, golf course, beach & township. Enjoy everything that beautiful Goolwa has to offer, boating, golfing, dining and beach days.

The property is being sold with the option to purchase all furniture, electrical items and outdoor furniture, some of which includes 2 x 75" TV's in the living areas & 65" TV in the master bedroom, commercial pillow top mattresses (2 x kings, 3 x queens & 1 x king single), leather lounge suites + so much more).

A seriously impressive property in a seriously sensational position, here is your chance to secure something special and enjoy for years to come.

Other features: Heating, Kitchenette, Security System, Window Treatments

- Land Area 760.00 square metres
- Bedrooms: 6
- Bathrooms: 2



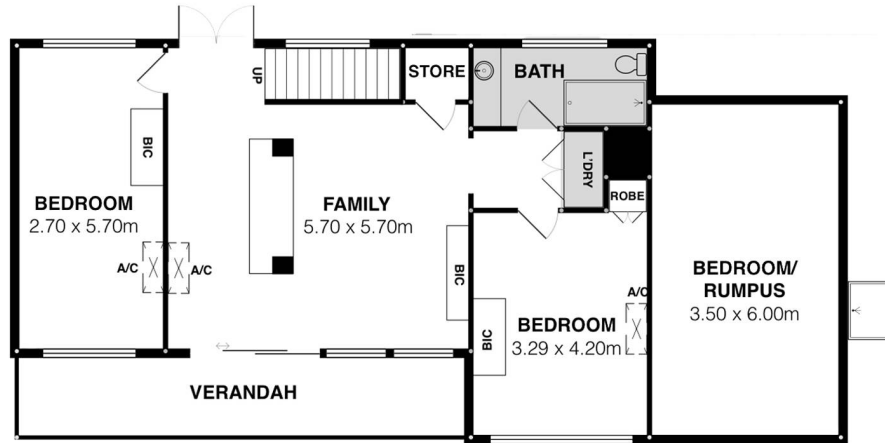








UPPER LEVEL



GROUND LEVEL

2 Egret Ave, Goolwa South



Scale in metres. This drawing is for illustration purposes only. All measurements are approximate and details intended to be relied upon should be independently verified.

PRODUCED BY

SOUTH COAST STUDIOS